



functional training & athletics



fitness & healthcare



gait training & gait analysis



sprint training



sports science & cycling



motion analysis & biomechanics



rehabilitation & robowalk®



endless ladder discovery®

product list 2025

h/p/cosmos price list 2025

h/p/cosmos® treadmills	order number	running surface l/w	speed	elevation	power supply *	UserTerminal display	CE
pluto® lt med	cos31002	150 / 50 cm	0 ... 22 km/h	0 ... 25 %	200 ... 240 Volt AC 1~ / 16 Amp.	no	CE 0123
pluto® med	cos31022	150 / 50 cm	0 ... 22 km/h	0 ... 25 %	200 ... 240 Volt AC 1~ / 16 Amp.	10,1" touch & keyboard	CE 0123
pluto® ef med (emotion fitness touch-display)	cos31012	150 / 50 cm	0 ... 22 km/h	0 ... 25 %	200 ... 240 Volt AC 1~ / 16 Amp.	7" touch	CE 0123
stratos® med	cos31032	150 / 50 cm	0 ... 22 km/h	0 %	200 ... 240 Volt AC 1~ / 16 Amp.	10,1" touch & keyboard	CE 0123
mercury® med	cos31042	150 / 50 cm	0 ... 22 km/h	0 ... 25 %	200 ... 240 Volt AC 1~ / 16 Amp.	10,1" touch & keyboard	CE 0123
stellar® med, with UserTerminal 10,1" TouchPro	cos30003-01va06	170 / 65 cm	0 ... 25 km/h	0 %	230 Volt AC 1~ / 15 Amp.	10,1" touch & keyboard	CE 0123
quasar® med, with UserTerminal 10,1" TouchPro	cos30003-01va02	170 / 65 cm	0 ... 25 km/h	0 ... 28 %	230 Volt AC 1~ / 15 Amp.	10,1" touch & keyboard	CE 0123
stellar® med 190/65, with UserTerminal 10,1" TouchPro	cos30004-01va06	190 / 65 cm	0 ... 25 km/h	0 %	230 Volt AC 1~ / 15 Amp.	10,1" touch & keyboard	CE 0123
pulsar® med, with UserTerminal 10,1" TouchPro	cos30004-01va02	190 / 65 cm	0 ... 25 km/h	-25 ... +25 %	230 Volt AC 1~ / 15 Amp.	10,1" touch & keyboard	CE 0123

Treadmills for climate chambers available on request (for all sizes as an option at extra charge for climatic conditions from -35°C ... +55°C and 20% ... 95% humidity) with external UserTerminal.

h/p/cosmos® neurological rehabilitation treadmills	order number	with adjustable handrails, therapists seats on both sides and foot rest	UserTerminal display	CE			
locomotion® 150/50 DE med	cos30001-01va02	150 / 50 cm	0 ... 10 km/h	-25 ... +25 %	230 Volt AC 1~ / 15 Amp.	15,6" touch	CE 0123
locomotion® 190/65-3p DE med	cos30024va04	190 / 65 cm	0 ... 25 km/h	-25 ... +25 %	400 Volt AC 3~ / 15 Amp.	15,6" touch	CE 0123

h/p/cosmos® high-performance treadmills	order number	running surface l/w	speed	elevation	power supply *	UserTerminal display	CE
quasar® med 3p, with MCU5 (6 displays)	cos30003va26	170 / 65 cm	0 ... 40 km/h	0 ... 28 %	400 Volt AC 3~ / 15 Amp.	yes	CE 0123
pulsar® lt 3p med, with MCU5	cos30004va02	190 / 65 cm	0 ... 40 km/h	-25 ... +25 %	400 Volt AC 3~ / 15 Amp.	no	CE 0123
pulsar® med 3p, with MCU5 (6 displays)	cos30004va04	190 / 65 cm	0 ... 40 km/h	-25 ... +25 %	400 Volt AC 3~ / 15 Amp.	yes	CE 0123

h/p/cosmos® oversize treadmills	order number	running surface l/w	speed	elevation	power supply *	UserTerminal display	CE
venus® 200/75	cos30005-01va05	200 / 75 cm	0 ... 40 km/h	-35 ... +35 %	400 Volt AC 3~ / 32 Amp.	15" touch	CE 0123
venus® 200/75 r	cos30005-01va06	200 / 75 cm	0 ... 40 km/h	-35 ... +35 %	400 Volt AC 3~ / 32 Amp.	15" touch	CE 0123
venus® 200/100	cos30006-01va05	200 / 100 cm	0 ... 40 km/h	-35 ... +35 %	400 Volt AC 3~ / 32 Amp.	15" touch	CE 0123
venus® 200/100 r	cos30006-01va06	200 / 100 cm	0 ... 40 km/h	-35 ... +35 %	400 Volt AC 3~ / 32 Amp.	15" touch	CE 0123
saturn® 250/75	cos30007-01va05	250 / 75 cm	0 ... 40 km/h	-27 ... +27 %	400 Volt AC 3~ / 32 Amp.	15" touch	CE 0123
saturn® 250/75 r	cos30007-01va06	250 / 75 cm	0 ... 40 km/h	-27 ... +27 %	400 Volt AC 3~ / 32 Amp.	15" touch	CE 0123
saturn® 250/100	cos30008-01va05	250 / 100 cm	0 ... 40 km/h	-27 ... +27 %	400 Volt AC 3~ / 32 Amp.	15" touch	CE 0123
saturn® 250/100 r	cos30008-01va06	250 / 100 cm	0 ... 40 km/h	-27 ... +27 %	400 Volt AC 3~ / 32 Amp.	15" touch	CE 0123
saturn® 250/125 rs	cos30009-01va03	250 / 125 cm	0 ... 40 km/h	-27 ... +27 %	400 Volt AC 3~ / 32 Amp.	15" touch	CE 0123
saturn® 300/75	cos30010-01va05	300 / 75 cm	0 ... 40 km/h	-27 ... +27 %	400 Volt AC 3~ / 32 Amp.	15" touch	CE 0123
saturn® 300/75 r	cos30010-01va06	300 / 75 cm	0 ... 40 km/h	-27 ... +27 %	400 Volt AC 3~ / 32 Amp.	15" touch	CE 0123
saturn® 300/100	cos30011-01va05	300 / 100 cm	0 ... 40 km/h	-27 ... +27 %	400 Volt AC 3~ / 32 Amp.	15" touch	CE 0123
saturn® 300/100 r	cos30011-01va06	300 / 100 cm	0 ... 40 km/h	-27 ... +27 %	400 Volt AC 3~ / 32 Amp.	15" touch	CE 0123
saturn® 300/125 rs	cos30012-01va03	300 / 125 cm	0 ... 40 km/h	-27 ... +27 %	400 Volt AC 3~ / 32 Amp.	15" touch	CE 0123

Further oversize treadmills and specialised running machines with custom dimensions and specifications available on request.

Treadmills for climate chambers available on request (for all sizes as an option at extra charge for climatic conditions from -35°C ... +55°C and 20% ... 95% humidity) with external UserTerminal.

h/p/cosmos® biomechanics treadmills	with pressure measurement plates & gait analysis software (medical PC & printer not included)	UserTerminal display	CE
stratos® med	cos31032	10,1" touch & keyboard	CE 0123
+ gaitway 3d med biomechanic-upgrade + 3 component (Fx,y,z) force measurement, requires additional subframe: [cos102999_subframe] / [cos102999_subframe_elev], with or without elevation	cos102999_150-50_MCU6va02		
stellar® med, with UserTerminal 10,1" TouchPro	cos30003-01va06	10,1" touch & keyboard	CE 0123
+ gaitway 3d med biomechanic-upgrade + 3 component (Fx,y,z) force measurement, requires additional subframe: [cos102999_subframe] / [cos102999_subframe_elev], with or without elevation	cos102999_170-65_MCU6va02		

Further biomechanic upgrades for example with pressure distribution sensor plates, see gaitway, noraxon, zebris.

h/p/cosmos® torqualizer® med ergometer series	order number	brake system	power range** optionally 750 W	rpm /min speed range	power supply *	max. user weight	CE
torqualizer® med 1200 with UserTerminal 10,1" TouchPro	cos30021va02	hybrid	6 ... 1200 watts **	20 ... >140 rpm **	100 ... 240 volts AC / 6 Amp.	150 kg	CE 0123
torqualizer® cycle ef med 900	cos30021ef-med900	hybrid	15 ... 500 watts	15 ... 140 rpm	grid independent (cordless)	150 kg	CE 0633
torqualizer® arm ef med 900 stand model incl. crank lever adjustable in length	cos30030ef-med900	hybrid	15 ... 500 watts	15 ... 140 rpm	grid independent (cordless)	150 kg	CE 0633
torqualizer® arm ef med 900 wall model incl. crank lever adjustable in length	cos30030ef-med900-wm	hybrid	15 ... 500 watts	15 ... 140 rpm	grid independent (cordless)	150 kg	CE 0633
torqualizer® recumbent ef med 900	cos30031ef-med900	hybrid	15 ... 500 watts	15 ... 140 rpm	grid independent (cordless)	150 kg	CE 0633
torqualizer® cross ef med 900	cos30032ef-med900	hybrid	(15) 100 ... 500 watts	15 ... 140 rpm	grid independent (cordless)	150 kg	CE 0633
torqualizer® stair ef med 900	cos30033ef-med900	hybrid	sinking rate	4 ... 27 m/min	grid independent (cordless)	150 kg	CE 0633

All options for torqualizers see torqualizer.

* We recommend a dedicated line 3-phase power connection (400 Volt AC3-NPE 50/60 Hz 16 to 32A fuse) and 3-phase device for high speed, fast acceleration, special applications and for heavier subjects due to higher performance. For all single

phase powered treadmills the natural performance limitations of single phase voltage supply apply due to the law of physics. For professional performance diagnostics, athletic training and high performance applications we strongly recommend running

machines with 3-phase voltage power supply from model size min. pulsar, venus, saturn. ** measured and calibrated up to 900 watts. Depending on gears and revolutions per minute. Tolerances may occur on loads above 900 watts.

h/p/cosmos® treadmills	order number	running surface l/w	speed	elevation	power supply *	UserTerminal display	CE
pluto® lt sport	cos31001	150 / 50 cm	0 ... 22 km/h	0 ... 25 %	200 ... 240 Volt AC 1~ / 16 Amp.	no	CE
pluto® sport	cos31021	150 / 50 cm	0 ... 22 km/h	0 ... 25 %	200 ... 240 Volt AC 1~ / 16 Amp.	10,1" touch & keyboard	CE
pluto® ef sport (emotion fitness touch-display)	cos31011	150 / 50 cm	0 ... 22 km/h	0 ... 25 %	200 ... 240 Volt AC 1~ / 16 Amp.	7" touch	CE
stratos® sport	cos31031	150 / 50 cm	0 ... 22 km/h	0 %	200 ... 240 Volt AC 1~ / 16 Amp.	10,1" touch & keyboard	CE
mercury® sport	cos31041	150 / 50 cm	0 ... 22 km/h	0 ... 25 %	200 ... 240 Volt AC 1~ / 16 Amp.	10,1" touch & keyboard	CE
stellar®, with UserTerminal 10,1" TouchPro	cos30003-01va05	170 / 65 cm	0 ... 25 km/h	0 %	230 Volt AC 1~ / 15 Amp.	10,1" touch & keyboard	CE
quasar®, with UserTerminal 10,1" TouchPro	cos30003-01va01	170 / 65 cm	0 ... 25 km/h	0 ... 28 %	230 Volt AC 1~ / 15 Amp.	10,1" touch & keyboard	CE
stellar® sport 190/65, with UserTerminal 10,1" TouchPro	cos30004-01va05	190 / 65 cm	0 ... 25 km/h	0 %	230 Volt AC 1~ / 15 Amp.	10,1" touch & keyboard	CE
pulsar® sport, with UserTerminal 10,1" TouchPro	cos30004-01va01	190 / 65 cm	0 ... 25 km/h	-25 ... +25 %	230 Volt AC 1~ / 15 Amp.	10,1" touch & keyboard	CE
saturn® 450/300 rs sport, with UserTerminal 10,1" TouchPro	cos30013-02va01	450 / 300 cm	0 ... 40 km/h	-4 ... +25 %	400 Volt AC 3~ / 64 Amp.	10,1" touch & keyboard	CE

h/p/cosmos® biomechanics treadmills	with pressure measurement plates & gait analysis software (medical PC & printer not included)					UserTerminal display	CE
stratos® sport	cos31031	150 / 50 cm	0 ... 22 km/h	optional	200 ... 240 Volt AC 1~ / 16 Amp.	10,1" touch & keyboard	CE
+ gaitway 3d sport biomechanic-upgrade + 3 component (Fx,y,z) force measurement, requires additional subframe: [cos102999_subframe] / [cos102999_subframe_elev], with or without elevation	cos102999_150-50_MCU6va01						
stellar®, with UserTerminal 10,1" TouchPro	cos30003-01va05	170 / 65 cm	0 ... 25 km/h	optional	230 Volt AC 1~ / 15 Amp.	10,1" touch & keyboard	CE
+ gaitway 3d sport biomechanic-upgrade + 3 component (Fx,y,z) force measurement, requires additional subframe: [cos102999_subframe] / [cos102999_subframe_elev], with or without elevation	cos102999_170-65_MCU6va01						
pulsar® sport 3p, with MCU5 (6 displays)	cos30004va07	190 / 65 cm	0 ... 40 km/h	optional	400 Volt AC 3~ / 15 Amp.	yes	CE
+ gaitway 3d biomechanics upgrade 3 component (Fx,y,z) force measurement requires additional subframe: [cos102999_subframe] / [cos102999_subframe_elev], with or without elevation	cos102999_190-65						

Further biomechanic upgrades for example with pressure distribution sensor plates, see gaitway, noraxon, zebris.

h/p/cosmos® ladder ergometer	order number	height of climb: 235cm, rung width: 49.5cm / interval: 24.4cm	power supply *	UserTerminal display	CE
discovery®	cos30014va02	"endless" ladder ergometer for climbing	230 Volt AC 1~ / 15 Amp.	yes	CE

h/p/cosmos® sprint trainer / rope traction device	order number	traction force- and traction resistance-training	power supply *	UserTerminal display	CE
comet®	cos30015va01	sprint trainer concentric/eccentric. 180 meter rope, 1-phase	230 Volt AC 1~ / 15 Amp.	yes	CE
comet® 3p	cos30015va02	sprint trainer concentric/eccentric. 180 meter rope, 3-phase	400 Volt AC 3~ / 15 Amp.	yes	CE

h/p/cosmos® torqualizer® ergometer series	order number	brake system	power** optionally 750 W	rpm 1/min speed range	power supply *	max. user weight	CE
torqualizer® 1200 with UserTerminal 10,1" TouchPro	cos30021va01	hybrid	6 ... 1200 watts **	20 ... >140 rpm **	100 ... 240 volts AC / 6 Amp.	150 kg	CE
torqualizer® cycle ef 900	cos30021ef-900	hybrid	25 ... 500 watts	15 ... 140 rpm	grid independent (cordless)	150 kg	CE
torqualizer® arm ef 900 stand model incl. crank lever adjustable in length	cos30030ef-900	hybrid	25 ... 500 watts	15 ... 140 rpm	grid independent (cordless)	150 kg	CE
torqualizer® arm ef 900 wall model incl. crank lever adjustable in length	cos30030ef-900-wm	hybrid	25 ... 500 watts	15 ... 140 rpm	grid independent (cordless)	150 kg	CE
torqualizer® recumbent ef 900	cos30031ef-900	hybrid	25 ... 500 watts	15 ... 140 rpm	grid independent (cordless)	150 kg	CE
torqualizer® cross ef 900	cos30032ef-900	hybrid	(15) 100 ... 500 watts	15 ... 140 rpm	grid independent (cordless)	150 kg	CE
torqualizer® stair ef 900	cos30033ef-900	hybrid	sinking rate	4 ... 27 m/min	grid independent (cordless)	150 kg	CE

All options for torqualizers, see torqualizer.

* We recommend a dedicated line 3 phase power connection (400 Volt AC3~/N/PE 50/60 Hz 16 to 32A fuse) and 3-phase device for high speed, fast acceleration, special applications and for heavier subjects due to higher performance. For all single phase powered treadmills the natural performance limitations of single phase voltage supply apply due to the law of physics. For professional performance diagnostics, athletic training and high performance applications we strongly recommend running machines with 3-phase voltage power supply from model size min. pulsar 3p, venus or saturn. ** measured and calibrated up to 900 watts. Depending on gearings and revolutions per minute. Tolerances may occur on loads above 900 watts.

Safety

Please make sure that you read, understand and obey with the user manual and warnings in full before operating any item of h/p/cosmos equipment, it contains both operating instruction, safety warnings and service requirements. Clinical staff must instruct their patients in the use of the equipment before use. Make sure that you have fully read and understood the safety requirements before using the equipment. h/p/cosmos medical treadmills may be operated with healthy subjects as well. For applications with healthy subjects, please apply the instructions for use for sports devices, available at www.h-p-cosmos.com. Use fall prevention system (e.g. safety arch with harness & fall stop) for all subjects where falling can cause serious injuries or death. EU- and MDD Information: Devices of the sports category must not be used for medical applications. When linking medical treadmills (which are risk class IIb medical devices) or any other medical devices with any host equipment (ECG, PC, EMG, etc.) to create a medical system, then always use potential isolation for power supply, interfaces, etc. Accessory equipment connected to the analog and digital interfaces must be certified according to the respective IEC standards, e.g. IEC 950 for data processing equipment and IEC 60601-1 for medical equipment. Furthermore all configurations and software shall comply with the valid version of the system standard IEC 60601-1-1, IEC 62304 and ISO 14971. Everybody who connects additional equipment to the signal input port or signal output port or via any other linkage possibility, configures a medical system and is therefore responsible that the system complies with the requirements of the valid version of the system standard and essential requirements IEC 60601-1-1, IEC 60601-1, MDD and risk management based on ISO 14971. All equipment within a medical system and with metal housing must be linked with potential equalization cables in star form and then connected to the potential equalization bar of the medical used room.

Warranty

If an h/p/cosmos product does not operate properly, h/p/cosmos or the authorized distributor will repair or replace it at no charge, for up to one year from shipment date. Furthermore registration and a signed maintenance contract will extend the warranty (for standard treadmills only, except for models "pluto" and except for special machines!) for parts only to a total of 3 years and 20 years on drive motor and main frame breakage. In the course of replacement or repair, h/p/cosmos or the authorized distributor may send you written recommendations of how to prevent re-occurrence of a problem. h/p/cosmos reserves the right to withdraw the warranty if the recommendations are not followed. The customer is responsible for transport charges both to and from h/p/cosmos in all cases. Local service may be available for which labour may be charged. This warranty is exclusive and in lieu of all other warranties whether written, oral or implied, including the warranty of fitness for any particular purpose. h/p/cosmos's liability is, in all cases, limited to the replacement price of its product. h/p/cosmos shall not be liable for any other damages, whether indirect, consequential or incidental arising from the sale or use of its product. h/p/cosmos may modify this warranty by signing a specific written description of any modifications. It is strictly forbidden to perform any amendments of the technical design, technical specifications, labelling and configurations (except allowed programming as described in the corresponding manual) of all machines, goods and the software and accessories connected to the machines. Any amendments, unauthorized, poor or lack of service and/or maintenance will result in loss of manufacturer's liability and warranty.

Liability

Failure to comply with the conditions listed on this page and all relevant operation manuals and warnings shall absolve h/p/cosmos sports & medical gmbh from any responsibility and liability for the safety, reliability and performance of the equipment. Each operator must read and understand the user manuals and warnings in full before using the equipment for the first time. A fall prevention system (e.g. safety arch with chest belt or unweighting system) is obligatory for all higher speed and special performance applications. Each user must be instructed in the proper use of the equipment and its accessories. Installations, commissioning, instructions and maintenance must only be performed through trained and h/p/cosmos certified personnel. The mechanical and electrical installation of the equipment must comply with the local or national requirements. The equipment must be installed and used in accordance with the instructions for use. It is obligatory that operators of h/p/cosmos equipment are trained and certified by h/p/cosmos or their appointed agents before use of the equipment. Such training has to be documented with content of training, date and names of trainers and trained persons. It is strictly forbidden to perform any amendments of the technical design, technical specifications, labelling and configurations (except allowed programming as described in the corresponding manual) of all machines, goods and the software and accessories connected to the machines. Any amendments, unauthorized, poor or lack of service and/or maintenance will result in loss of manufacturer's liability and warranty.

Information

All h/p/cosmos running machines are manufactured by h/p/cosmos in Nussdorf-Traunstein / Germany. Accessories may be imported goods.
Abbreviations for the treadmill model names: t = without terminal (no display and no keyboard), r = for bicycle and wheelchair use. Wheelchair stabilizer is obligatory and is optional accessory! rs = ski & spikes use.
UMDNS-Code: 14-141 running machines / GMDN codes for treadmills: 33015: "EXERCISER, TREADMILL" or 36679: "ERGOMETER, TREADMILL" or 17895: "STRESS EXERCISE TROLLEY"
customs tariff no. sports running machines: 9506 9110 / customs tariff no. medical running machines: 9018 1910
* Use dedicated power supply with dedicated fuse for each running machine (treadmill). 230 volts 16 A types may also be operated at 220 or 240 volts 15 A. Special voltages available.
We strongly recommend a dedicated line 3 phase 400 volt connection and 3-phase treadmill for high speed, fast acceleration and for heavier subjects due to higher performance. Performance limitations apply for all single phase powered machines.

Delivery and Installation

The delivery (manufacturing) time for h/p/cosmos running machines up to deck size 190/65cm is 2 to 3 weeks after order confirmation in general or after receipt of pre-payment if agreed. Special design machines, special colours, other models and devices on request.
Shipment time 2 to 7 days in Europe and 3 to 6 weeks via sea freight for overseas. For delivery into buildings and/or rooms additional costs apply. Any building modifications are to be covered by the customer.
Warning! Installation, commissioning, instruction and maintenance only to be conducted by h/p/cosmos trained and authorized personnel. For oversize running machines (200/75cm), special systems and software special certification and authorization apply.
For running surfaces with 200x75cm or bigger, special applications, at higher speeds or for subjects with higher risk of falling, or if there is not enough safety space behind the treadmill, a fall prevention system (e.g. safety arch with harness & chest belt) is obligatory.

Prices

All prices net, EXW (ex works) h/p/cosmos factory Germany, in EURO. Valid from 01.01.2025 until 31.12.2025 only for Germany.
Prices in other countries can vary significantly. Transport, packing, VAT, import taxes, custom duties, L/C and bank fees, installation and instruction are not included.
Possession of this price list does not constitute an offer to sell; it is for information only. Property and ownership of goods shall remain with the seller and shall not pass to the buyer until full payment of the price has been received.
E & OE. Subject to alterations without prior notice. Full terms of trading available on request. General terms of business apply. http://www.h-p-cosmos.com/en/company/terms_of_business.htm
Copyright 1988 - 2025 h/p/cosmos sports & medical gmbh / Germany

Manufacturer of running machines:

h/p/cosmos sports & medical gmbh
Am Sportplatz 8
DE 83365 Nussdorf-Traunstein / Germany
phone +49 86 69 86 42 0 or +49 1805 167667*
fax +49 86 69 86 42 49 or +49 1805 167669*
*0.394 € / minute (for international phone, possible different prices for international cellphone and fax)
sales@hpcosmos.com, www.hpcosmos.com
Legal domicile: 83278 Traunstein / Germany

Authorised h/p/cosmos dealer / distributor:

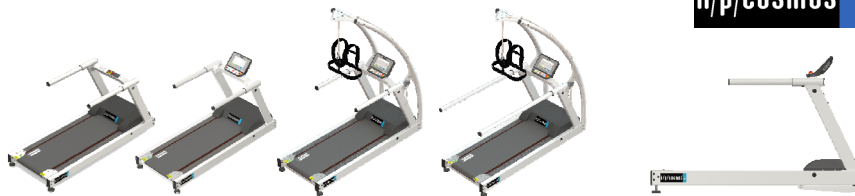
price list order no.: [cos10157-202501en]

treadmill pluto sport / med (running surface 150/50)



specifications standard version:

running surface:	150 x 50 cm
speed:	0 ... 22 km/h
elevation:	0 ... 25%
handrail standard:	50% running deck length, plug-in-system
UserTerminal:	touch console front centric
max. subject weight:	250 kg



medical

h/p/cosmos® treadmills	order number	running surface l/w	speed	elevation	power supply *	UserTerminal display	CE
pluto@ it med	cos31002	150 / 50 cm	0 ... 22 km/h	0 ... 25 %	200 ... 240 Volt AC 1- / 16 Amp.	no	CE 0123
pluto@ med	cos31022	150 / 50 cm	0 ... 22 km/h	0 ... 25 %	200 ... 240 Volt AC 1- / 16 Amp.	10,1" touch & keyboard	CE 0123
pluto@ ef med (emotion fitness touch-display)	cos31012	150 / 50 cm	0 ... 22 km/h	0 ... 25 %	200 ... 240 Volt AC 1- / 16 Amp.	7" touch	CE 0123

sports

h/p/cosmos® treadmills	order number	running surface l/w	speed	elevation	power supply *	UserTerminal display	CE
pluto@ it sport	cos31001	150 / 50 cm	0 ... 22 km/h	0 ... 25 %	200 ... 240 Volt AC 1- / 16 Amp.	no	CE
pluto@ sport	cos31021	150 / 50 cm	0 ... 22 km/h	0 ... 25 %	200 ... 240 Volt AC 1- / 16 Amp.	10,1" touch & keyboard	CE
pluto@ ef sport (emotion fitness touch-display)	cos31011	150 / 50 cm	0 ... 22 km/h	0 ... 25 %	200 ... 240 Volt AC 1- / 16 Amp.	7" touch	CE

* We recommend a dedicated line 3-phase power connection (400 Volt AC3-N/PE 50/60 Hz 16 to 32A fuse) and 3-phase device for high speed, fast acceleration, special applications and for heavier subjects due to higher performance. For all single phase powered treadmills the natural performance limitations of single phase voltage supply apply due to the law of physics. For professional performance diagnostics, athletic training and high performance applications we strongly recommend running machines with 3-phase voltage power supply from model size min. pulnar 3p, venus or saturn.

treadmill upgrades

treadmill upgrades	order number	Treadmills for climate chambers available on request (optional at extra charge for climatic conditions from -35°C ... +55°C and 20% ... 95% humidity)
Upgrade UserTerminal TouchPro	cos101000_touch_pro	Upgrade of the UserTerminal Touch Basic to UserTerminal TouchPro for professional applications and special features; Sales price: 1,490.00 EUR 100% discount for market launch.
Reverse belt rotation (downhill) 150/50 with UserTerminal 10,1" Touch	cos101000_reverseva01	for pluto@ models with running surface 150/50 cm, incl. belt centering rolls, max. reverse speed: 5 km/h, with safety arch; 25 km/h
Elevation -5% ... +14% one (frontal) direction 150/50	cos103668	Elevation -5% ... +14% in one (frontal) direction without using reverse belt rotation
Low access height with 0% inclination for pluto@ and mercury®	cos103724	lower access height of 17 cm, no elevation possible
Special running belt with rubber profile, 5 mm thick for 150/50 pluto®	cos15132_LC	special heavy duty running belt with a belt thickness of 5mm for remarkably smooth running comfort (only for pluto®)
Running belt with middle marking for motion analysis 150/50	cos14288va02	routed middle marking approx.5 mm / for models with running surface 150/50 cm; for pluto a special running belt (cos15132_LC) is additional necessary!
Special colour treadmill frame in RAL	cos102465ralxxxx	all special (RAL) colours; free of charge for orders of 5 or more
Special matt design for motion analysis	cos103019	frame colour RAL 9005 deep black (powder coated, non-shiny) to reduce reflections on the treadmill frame
POLAR Sender T34 Set (extended Range)	cos15178	POLAR T34 chest belt transmitter
Motor brake for treadmill 150/50 G7	cos101000_brake_as	mainly prevents that the running belt can be driven manually when speed is set to "0". Speed sensor and measurement of basic gait parameters (step length, cadence, step count) included.
Activation of acceleration levels 5 ... 7	cos101000_acceleration	very high acceleration (up to 2.315 m/s²), activation via license key
Self-controlled speed, LED software	cos101000_speed_control	belt speed is automatically adjusted according to position of subject (within predefined limits), this article only covers the required software, the additional hardware (optojump / optogait) has to be ordered separately at extra charge. Optogait 1m [cos102067]
Therapists seats for treadmill 150/50 G7	cos104733_150	therapist seats, attached to left and right side of treadmill frame, position individually adjustable
Metronome	cos101000_metronome	acoustic cueing for individually setting the cadence target
h/p/cosmos Perturbation Software for UserTerminal TouchPro	cos101000sw_pert-V1.0	Special software feature for sudden deceleration and acceleration of the treadmill belt speed respectively of the belt.
Bluetooth FTMS Interface for UserTerminal TouchPro	cos101000_FTMS	user terminal Bluetooth FTMS interface for connecting e.g. software Zwiit or Kinomap FTMS = FITness Machine Service protocol
NFC / RFID module for UserTerminal TouchPro	cos101000_NFC	reading the NFC / RFID identifier of a suitable transponder
Bluetooth for UserTerminal TouchPro	cos101000_bluetooth	wireless data transmission via bluetooth. Receiving compatible signals such as heart rate transmitters.
SmartPhone holder for UserTerminal Touch & TouchPro	cos102488_iph_vesa	mounting via vesa holder on user terminal

handrail options

handrail options	order number	
Handrail long	cos102918-01	long handrails straight for 150/50 pluto® and mercury® models with running surface 150/50 cm (not for USA/Canada)
Handrail speed pluggable	cos103651	pluggable handrail speed with special grip for left and right side
Handrail pediatric (standard version)	cos102400-01va01	Pediatric handrail with cross- & side bar, variable grip height min. 413 mm / max. 820 mm above running surface / length: 620 mm
Handrail pediatric (long version)	cos102400-01va02	Pediatric handrail with cross- & side bar, variable grip height min. 413 mm / max. 820 mm above running surface / length: 1.540 mm
Handrails adjustable 150/50 (pluto G7)	cos102010-01va01	bar length 1500 mm, locking bar for height raster 25 mm for pluto® models 150/50 cm, H: 75 ... 120 cm / W: 38 ... 104 cm
Handrail adjustable 150/50 G7, comfort	cos104732_150	handrail length 1500 mm, height adjustment via gas piston
Extension rods for adjustable handrail 150/50 and 170/65	cos102899	the extension rods D= 25 mm offer another 550 mm length to the back
Handrail short	cos103867	very short handrails straight (length: 17 cm, 2 tubes - left and right side, crossbar obligatory)
Handrail crossbar	cos102426	crossbar B inside approx. 698mm with fixation clamps for handrail D= 60mm, for pluto® models with running surface 150/50 cm

arm support

arm support & accessories	order number	
Adjustable arm supports with scale (0° handrail shape)	cos12013-01	for models with running surface 170&190/65 and 150/50 cm with short and long handrail
Arm supports for handrails adjustable	cos102560	Forearm support with hand grip for adjustable handrails cos102010, cos102550 und cos102551 (originally equipped)***
Additional stop-button right	cos101107	stop-button for hand grip in the arm support, right hand side
Additional stop-button left	cos101108	stop-button for hand grip in the arm support, left hand side
Additional keyboard with magnet holder MCU5	cos100815-02	mobile remote control with 6 keys with a approx. 2 m coiled cord - with magnet holder for all handrails, for all MCU5-devices
Additional keyboard with magnet holder UserTerminal 10.1" Touch	cos104551	mobile remote control with 6 keys with a approx. 2 m coiled cord - with magnet holder for all handrails
Extension cable for additional keyboard	cos100816-01	Spiral cable extendable to 1,6 meters
Mount for additional keyboard on arm supports	cos10111-03	holder for the additional keyboard [cos100815-02] on adjustable arm supports (if ordered)

safety systems

safety systems	order number	
Safety arch 50 with harness & chest belt / stop function	cos10079-01va01	fall protection for all applications (mandatory for high risk applications); running surface 50 cm wide
Safety arch 50 upgrade h=220 cm	cos14424-01	upgrade for safety arch for users up to 220 cm, for running surface 50 cm wide
Chest belt XXS for safety arch	cos14903-04-XXS	chest belt for safety arch, size XXS (chest measurement: 45-65 cm), colour code orange
Chest belt XS for safety arch	cos14903-04-XS	chest belt for safety arch, size XS (chest measurement: 55-75 cm), colour code black
Chest belt S for safety arch	cos14903-04-S	chest belt for safety arch, size S (chest measurement: 65-95 cm), colour code red
Chest belt M for safety arch	cos14903-04-M	chest belt for safety arch, size M (chest measurement: 85-115 cm), colour code blue
Chest belt L for safety arch	cos14903-04-L	chest belt for safety arch, size L (chest measurement: 105-135 cm), colour code yellow
Chest belt XL for safety arch	cos14903-04-XL	chest belt for safety arch, size XL (chest measurement: 125-155 cm), colour code green
Rope 4.3m (replacement) for [cos10079-01] & [cos10170-01 - cos10173-01]	cos10670-02	rope (replacement) for safety arch; to be replaced every 24 months or at the first sign of wear
Fall prevention system for ceiling mount with emergency stop	cos15866-01	safety device for ceiling mount including fall prevention with emergency stop function for treadmill's running belt
Fall prevention system for ceiling mount without emergency stop	cos15866-01ws	safety device for ceiling mount including fall prevention without emergency stop function for treadmill's running belt
Rope 10m (replacement) for [cos15866-01] & [cos15866-01ws]	cos101729-01	rope (replacement) for fall prevention system for ceiling mount ; to be replaced every 24 months or at the first sign of wear
Magnet with ripcord incl. plastic clip (spare part)	cos101699-03	safety stop lanyard pull-cord with magnet (only spare part "magnet, cord and clip", not the integrated contact switch)
Emergency stop-button with magnet holder + 5 m spiral cable	cos101418-02	and Velcro-Strip for safety reasons. Jack at this treadmill is prerequisite! Quote treadmill serial no. for refitting.
Emergency stop-button with magnet holder + 10 m spiral cable	cos100548	and Velcro-Strip for safety reasons. Jack at this treadmill is prerequisite! Quote treadmill serial no. for refitting.
Footboard extra wide (both sides) 150/50	cos103928	for therapy, diagnostics and safe on and off stepping for gait training and diagnostics

unweighting systems

unweighting systems	order number	partial body weight support (unweighting / weight relief) systems. airwalk® ... adjustable gravity™ (all options see airwalk ap)
airwalk® ap	cos30028	unweighting device dynamic up to ca. 70 kg, compressor or compressed air supply required (max. 250 kg / 551 lbs body weight), incl. chest belt size M
airwalk® ap lt	cos30028-lt	individual special design without metal arches, for ceiling mount, e.g. for 3D motion analysis
Compressor for airwalk® ap, 10 bar	cos103275	air compressor for airwalk® ap, 10 bar - incl. noise cancelling hood
Compressor for airwalk® ap, 8 bar	cos103058	air compressor for airwalk® ap, 8 bar
Option emergency stop for airwalk® ap	cos102342-01	additional function of airwalk ap also as fall prevention system (safety arch) with autom. treadmill belt stop
Option AirCushion mode for airwalk® ap	cos102469	additional valve (mode switch) for airwalk ap for "balancing" the subject. Air cylinder works as "air cushion"; in cos102342-01 already included.
Extension sling set 60 cm for h/p/cosmos airwalk®	cos100432-01	i.e. for small subjects (children) in airwalk vest XS for h/p/cosmos airwalk®
Express sling/loop 18 cm	cos102785-01	1x express sling/loop 18 cm for extension of pulling rope
Special colour airwalk® ap	cos102844	special colour / powder coating airwalk® ap
Vest XXS for h/p/cosmos airwalk® (all models)	cos10095-vest-XXS	vest for h/p/cosmos airwalk®, size XXS (thorax circumference: 62-75 cm), colour code orange
Vest XS for h/p/cosmos airwalk® (all models)	cos10095-vest-XS	vest for h/p/cosmos airwalk®, size XS (thorax circumference: 76-84 cm), colour code white
Vest S for h/p/cosmos airwalk® (all models)	cos10095-vest-S	vest for h/p/cosmos airwalk®, size S (thorax circumference: 85-92 cm), colour code red
Vest M for h/p/cosmos airwalk® (all models)	cos10095-vest-M	vest for h/p/cosmos airwalk®, size M (thorax circumference: 93-105 cm), colour code yellow
Vest L for h/p/cosmos airwalk® (all models)	cos10095-vest-L	vest for h/p/cosmos airwalk®, size L (thorax circumference: 106-114 cm), colour code green
Vest XL for h/p/cosmos airwalk® (all models)	cos10095-vest-XL	vest for h/p/cosmos airwalk®, size XL (thorax circumference: 116-130 cm), colour code blue
Neoprene shorts S for h/p/cosmos airwalk® (all models)	cos10095-neo-S	neoprene shorts for airwalk®, size S (waist: 55-92 cm)
Neoprene shorts M for h/p/cosmos airwalk® (all models)	cos10095-neo-M	neoprene shorts for airwalk®, size M (waist: 93-105 cm)
Neoprene shorts L for h/p/cosmos airwalk® (all models)	cos10095-neo-L	neoprene shorts for airwalk®, size L (waist: 106-114 cm)
Neoprene shorts XL for h/p/cosmos airwalk® (all models)	cos10095-neo-XL	neoprene shorts for airwalk®, size XL (waist: 115 - 123 cm)

robwalk®

robwalk® expander systems	order number	
robwalk® expander front 150/50 with safety arch [cos10079-01]	cos30022-02va06	for the front area - for h/p/cosmos treadmills with running surface 150/50 cm with safety arch
robwalk® expander front airwalk® ap	cos30022-02va04	for the front area - for all h/p/cosmos treadmills with optional h/p/cosmos airwalk® ap
robwalk® expander back (rear)	cos30023-03	for the rear area - for all h/p/cosmos treadmills
Leg cuff thigh S, 1 pair	cos101050-S	accessory for robwalk® expander; size S (250-390 mm)
Leg cuff thigh M, 1 pair	cos101050-M	accessory for robwalk® expander; size M (350-510 mm)
Leg cuff thigh L, 1 pair	cos101050-L	accessory for robwalk® expander; size L (490-750 mm)
Leg cuff shank, 1 pair	cos101051-XS	accessory for robwalk® expander; size XS (140-270 mm)
Mounting-bracket-set robwalk® expander front	cos101355va07	Please quote the serial number and model of h/p/cosmos treadmill on the order!
robwalk® manual pulling unit with 125 cm expander rope	cos101745	1 pair of expander manual pulling units 125 cm (incl. 1 noose and 1 thigh cuff)
Universal noose robwalk	cos101748	universal noose robwalk

ramps

wheelchair ramps	order number	
Wheelchair ramp for treadmill 150/50	cos16186-02	wheelchair ramp (L: 125 cm x W: 80 cm) for models with running surface 150/50 cm (pluto, mercury, locomotion)

motion analysis, biomechanics

zebris® - motion analysis / biomechanics	order number	PC, monitor and mounting not included, must be ordered separately
zebris® FDM pressure measuring platform 2i upgrade for pluto running deck 150/50, without treadmill	cos103335-01va02	option pressure distribution platform 101.6 x 49.5 cm, 3,120 sensors, 120 Hz, price only valid for initial fitting-out, incl. software zebris FDM for gait analysis
zebris® FDM pressure measuring platform 3i upgrade for pluto running deck 150/50, without treadmill	cos103566	option pressure distribution platform 101.6 x 47.4 cm, 6,270 sensors, 120 Hz, price only valid for initial fitting-out, incl. software zebris FDM for gait analysis
zebris® modular extension with 120 Hz for running deck 150/50	cos101733	extension (must be ordered with the treadmill) from standard 120 Hz by further 120 Hz to 240 Hz sampling rate in total
zebris® SyncCam HS (HS camera without tripod)	cos100385i	video camera 60 fps Full HD (1920x1080), 90 fps HD (1920x720), 120fps VGA (640x480)
zebris® SyncCam (camera without stand)	cos100385d	video camera 30 Hz, synchronization cable, USB cable and power supply - without light system
zebris® SyncLightCam (camera and LED light without stand)	cos100385a	camera 30 Hz and lighting unit with 10 power LEDs incl. software driver, synchronisation cable, USB cable and power supply unit
zebris® stand for SyncCam or SyncLightCam (mobile)	cos100385b	mobile stand for SyncCam and SyncLightCam with integrated cable fixation
zebris® Stand for SyncCamLight (not mobile)	cos103311	non-mobile tripod for camera and lighting system with integrated cable fixation
zebris® FDM-Stance Module	cos100384	extra software module for stance and balance analysis for instrumented biomechanic treadmill and for platform stand alone
zebris® software-module Running Analysis	cos104494	Software module for the parameterisation of the movement phases, the geometry, the timing, as well as the essential force and pressure parameters of the running movement. A COP analysis is carried out according to trajectory, density and speed.
zebris® visual stimulation upgrade for 150/50 (Rehwalk®)	cos101291-01	video projector, mounting and software for gait training through step projection on h/p/cosmos treadmill 150/50 cm
zebris® software-module virtual training (without monitor)	cos101062	interactive gait training on a virtual forest path incl. five gait modules in different levels of difficulty for augmented feedback on the instrumented h/p/cosmos treadmill (without monitor, without stand)
zebris® module editor virtual training "forest walk"	cos102521	Upgrade for [cos101062]. Editor to integrate obstacles with different degrees of difficulty on the treadmill for augmented feedback.
zebris® software-module virtual environment (without monitor)	cos104587	interactive gait training on a virtual forest path incl. three gait modules in different levels of difficulty for augmented feedback on the instrumented h/p/cosmos treadmill (without monitor, without stand) (for sports)
zebris® virtual running environment	cos104616	Software module for moving along a virtual training track.
zebris® software-Extension LiveGait®	cos104588	Real-time display of various gait parameters during walking on the treadmill. Feedback training by setting reference values
zebris® software-Extension 7-Zones Report	cos104589	Softwareextension for dividing the foot load surface area of the left and right side of the body into 7 zones
zebris® software-Extension Live Mode	cos104590	Real-time display of various gait parameters during running on the treadmill. Feedback training by setting reference values. Only in combination with zebris® software-module [cos14494] Running Analysis Running Analysis possible.
zebris® Optical Marker Tracking	cos104591	Add-On-Module for FDM-T system for kinematic movement analysis of one body side. The set contains 10 passive markers 1 package of adhesive patches (20 x 5 mm, 500 pieces) for proper fixation of the markers, including software extension. For using the Add-On-Module the 01540194 / SYNCLightCam is preconditioned as well as an updated version of software zebris FDM.

Microgate® - LED optical gait analysis / bio feedback	order number	All options see microgate.
Optogait Kit 1m single meter	cos102065	OploGait is an optical measuring system consisting of a transmitting and a receiving measuring bar. Content: 1xTX, 1xRX bar with interface, 2 webcams, 2 tripods, USB cable, power supply, software, bag for 1 meter. PC or laptop required.
Optofix mounting Optogait / Optojump on the treadmill	cos103386	Holder system with magnets for Optojump / Optogait bar to mount it on h/p/cosmos treadmill (not for extra wide footboards). This set consists of 4 fastening profiles. For one bar 2 fastening profiles. Optogait / Optojump bar is NOT included in this item!

IT, computer & visualisation	order number	
h/p/cosmos satellite PC med	cos14970-03	DELL PC, 2x 24" LED Monitor, COL Laser printer, potential isolation transformer, h/p/cosmos PC-rack with 4 casters
h/p/cosmos satellite PC med LC	cos14970-03_LC	PC mintower without on-site support, 2 pcs. 24" LED monitor, potential isolation transformer, h/p/cosmos PC-rack with 4 casters
h/p/cosmos satellite Notebook	cos15686-01	DELL notebook, potential isolation transformer, h/p/cosmos PC-rack with 4 casters
DELL Laptop Computer	cos13476-01	technical details and specification on request
Labour costs per hour system specialist & software	cos60098010004	service engineer system specialist and software for installation, maintenance and repairs in the factory h/p/cosmos.
h/p/cosmos PC-rack of steel, without PC, without devices	cos15033-03	ergonomically designed PC-rack in pure white (RAL-colour 9010) of powder coated steel in h/p/cosmos-design
LED monitor TV 50" (with a small monitor stand for table)	cos102397	for example for SpeedLab®, gateway® display or for the virtual training module of zebris®
Monitor stand mobile for LCD TV 32-60"	cos101624	monitor stand (without monitor!) for additional TV / monitor (max. load: 30 kg), height: 180 cm.
Wall mount for LCD monitor TV 32-65"	cos101627	wall mount (without monitor!) for additional TV / monitor 32-65"
Connection cable RS232 5 m	cos00097010034	RS232, 5 m (Sub-D 9-pin male/female), USB-Adapter optionally available (cos12769-01)
Connection cable RS232 10 m	cos00097010035	RS232, 10 m (Sub-D 9-pin male/female), USB-Adapter optionally available (cos12769-01)
USB to RS232 converter	cos12769-01	converter from USB to serial port RS232 (Sub-D 9-pin male)

lactate measurement, supplies & software		All options see options, accessories.
motion & gait analysis		All options see gateway, noraxon, zebris.
options		All options see options, accessories.

In case of retrofitting of options and accessories, prices will be higher than indicated in the price list. Please specify device, model and serial number for a detailed quotation. Not all options and accessories are available for all models.

packing pallet & cardboard hood	order number	export packing, stackable packing: 90 EURO surcharge	measurements L / W / H
Packing treadmill 150/50, full assembled	cos102522va04	packed full assembled on pallet with cardboard hood	230 / 109 / 169 cm
Packing treadmill 150/50, part assembled	cos102522va01	packed part assembled on pallet with cardboard hood	230 / 109 / 87 cm
Packing treadmill 150/50 (SA), part assembled	cos102522va03	packed part assembled on pallet with cardboard hood, incl. safety arch	274 / 122 / 94 cm
Packing airwalk® ap, part assembled	cos102538-02va02	packed part assembled on pallet with cardboard hood	230 / 109 / 90 cm
packing wooden box	order number	export packing	measurements L / W / H
Packing treadmill 150/50, part assembled	cos102522-01va04	packed part assembled in a wooden box	230 / 110 / 98 cm
Packing treadmill 150/50 (SA), part assembled	cos102522-01va06	packed part assembled in a wooden box, incl. safety arch	274 / 122 / 103 cm
Packing treadmill 150/50 (SA), full assembled	cos102522-01va07	packed part assembled in a wooden box, incl. safety arch	274 / 122 / 163 cm
Packing airwalk® ap, part assembled	cos102538-02va03	packed part assembled in a wooden box	230 / 109 / 90 cm

transport, installation & instruction, labour	order number	
Sea water proof (option) 150/50, 170&190/65	cos10052	additional labour costs for sea water proof packing
Inst. & Instruction treadmill 150/50 EU	cos15732-eu	Installation in Europe onsite at customer's facility, incl. traveling, hotel, labour costs and training
Inst. & Instruction treadmill 150/50 OS	cos15732-os	Installation Overseas onsite at customer's facility, incl. traveling, hotel, labour costs and training
Inst. & Instr. h/p/cosmos airwalk ap EU	cos100925-eu	Installation Europe onsite at customer's facility, incl. traveling, hotel, labour costs and training
Inst. & Instr. h/p/cosmos airwalk ap OS	cos100925-os	Installation Overseas onsite at customer's facility, incl. traveling, hotel, labour costs and training
Labour costs per hour for service engineer	cos60098010001	service engineer for installation, maintenance and repairs
Labour costs per hour system specialist & software	cos60098010003	service engineer system specialist and software for installation, maintenance and repairs at the customer's site.
1-day application workshop	cos101094	includes costs for specialist / referent, not included flight, logistics, hotel, etc. (need to be charged separately)
Trolley for treadmill 150/50 & 170&190/65	cos16692	means of transportation: handle with 2 wheels and lifting-help for a simple moving of the treadmill

IT, computer & visualisation

others

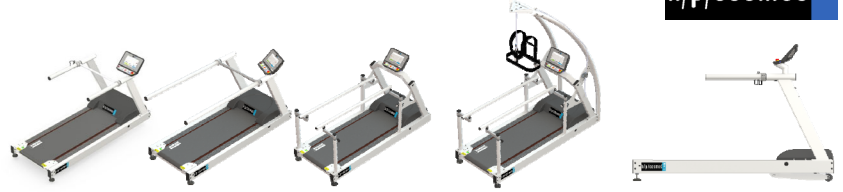
packing, transport, installation

treadmill mercury sport / med (running surface 150/50)



specifications standard version:

running surface:	150 x 50 cm
speed:	0 ... 22 km/h
elevation:	0 ... 25%
handrail standard:	50% running deck length, plug-in-system
UserTerminal:	touch console front right at handrail
running belt:	special running belt with rubber profile, 5 n
max. subject weight:	300 kg



h/p/cosmos® treadmills	order number	running surface l/w	speed	elevation	power supply *	UserTerminal display	CE
stratos® med	cos31032	150 / 50 cm	0 ... 22 km/h	0 %	200 ... 240 Volt AC 1- / 16 Amp.	10,1" touch & keyboard	CE 0123
mercury® med	cos31042	150 / 50 cm	0 ... 22 km/h	0 ... 25 %	200 ... 240 Volt AC 1- / 16 Amp.	10,1" touch & keyboard	CE 0123

h/p/cosmos® treadmills	order number	running surface l/w	speed	elevation	power supply *	UserTerminal display	CE
stratos® sport	cos31031	150 / 50 cm	0 ... 22 km/h	0 %	200 ... 240 Volt AC 1- / 16 Amp.	10,1" touch & keyboard	CE
mercury® sport	cos31041	150 / 50 cm	0 ... 22 km/h	0 ... 25 %	200 ... 240 Volt AC 1- / 16 Amp.	10,1" touch & keyboard	CE

* We recommend a dedicated line 3 phase power connection (400 Volt AC3-NIPE 50/60 Hz 16 to 32A fuse) and 3-phase device for high speed, fast acceleration, special applications and for heavier subjects due to higher performance. For all single phase powered treadmills the natural performance limitations of single phase voltage supply apply due to the law of physics. For professional performance diagnostics, athletic training and high performance applications we strongly recommend running machines with 3-phase voltage power supply from model size min. pulser 3p, venus or sartun.

treadmill upgrades	order number	
Upgrade UserTerminal TouchPro	cos101000_touch_pro	Treadmills for climate chambers available on request (optional at extra charge for climatic conditions from -35°C ... +55°C and 20% ... 95% humidity) Upgrade of the UserTerminal Touch Basic to UserTerminal TouchPro for professional applications and special features; Sales price: 1.490.00 EUR 100% discount for market launch.
Reverse belt rotation (downhill) 150/50 with UserTerminal 10,1" Touch	cos101000_reverseva02	for mercury® models with running surface 150/50 cm, incl. belt centering rolls, max. reverse speed: 5 km/h, with safety arch: 25 km/h
Low access height with 0% inclination for pluto® and mercury®	cos103724	lower access height of 17 cm, no elevation possible
Elevation -5% ... +14% one (frontal) direction 150/50	cos103668	Elevation -5% ... +14% in one (frontal) direction without using reverse belt rotation
Running belt with middle marking for motion analysis 150/50	cos14288va02	routed middle marking approx.5 mm / for models with running surface 150/50 cm; for pluto a special running belt (cos15132_LC) is additional necessary!
Special colour treadmill frame in RAL	cos102465ralxxxx	all special (RAL) colours, free of charge for orders of 5 or more
Special matt design for motion analysis	cos103019	frame colour RAL 9005 deep black (powder coated, non-shiny) to reduce reflections on the treadmill frame
POLAR Sender T34 Set (extended Range)	cos15178	POLAR T34 chest belt transmitter
Motor brake for treadmill 150/50 G7	cos101000_brake_as	mainly prevents that the running belt can be driven manually when speed is set to "0". Speed sensor and measurement of basic gait parameters (step length, cadence, step count) included.
Activation of acceleration levels 5 ... 7	cos101000_acceleration	very high acceleration (up to 2.315 m/s²), activation via license key
Self-controlled speed, LED software	cos101000_speed_control	belt speed is automatically adjusted according to position of subject (within predefined limits), this article only covers the required software, the additional hardware (optojump / optogait) has to be ordered separately at extra charge. Optogait 1m [cos102067]
Therapists seats for treadmill 150/50 G7	cos104733_150	therapist seats, attached to left and right side of treadmill frame, position individually adjustable
Metronome	cos101000_metronome	acoustic cueing for individually setting the cadence target
h/p/cosmos Perturbation Software for UserTerminal TouchPro	cos101000sw_pert-V1.0	Special software feature for sudden deceleration and acceleration of the treadmill belt speed respectively of the belt.
Bluetooth FTMS Interface for UserTerminal TouchPro	cos101000_FTMS	user terminal Bluetooth FTMS interface for connecting e.g. software Zwift or Kinomap FTMS = FITness Machine Service protocol
NFC / RFID module for UserTerminal TouchPro	cos101000_NFC	reading the NFC / RFID identifier of a suitable transponder
Bluetooth for UserTerminal TouchPro	cos101000_bluetooth	wireless data transmission via bluetooth. Receiving compatible signals such as heart rate transmitters.
SmartPhone holder for UserTerminal Touch & TouchPro	cos102488_iph_vesa	mounting via vesa holder on user terminal

handrail options	order number	
Handrail long	cos102918-01	long handrails straight for 150/50 pluto® and mercury® models with running surface 150/50 cm (not for USA/Canada)
Handrail speed pluggable	cos103651	pluggable handrail speed with special grip for left and right side
Handrail pediatric (standard version)	cos102400-01va01	Pediatric handrail with cross- & side bar, variable grip height min. 413 mm / max. 820 mm above running surface / length: 620 mm
Handrail pediatric (long version)	cos102400-01va02	Pediatric handrail with cross- & side bar, variable grip height min. 413 mm / max. 820 mm above running surface / length: 1.540 mm
Handrails adjustable 150/50 (mercury G7)	cos102010-01va02	bar length 1500 mm, locking bar for height raster 25 mm for mercury® models 150/50 cm, H: 75 ... 120 cm / W: 38 ... 104 cm
Handrail adjustable 150/50 G7, comfort	cos104732_150	handrail length 1500 mm, height adjustment via gas piston
Extension rods for adjustable handrail 150/50 and 170/65	cos102899	the extension rods D= 25 mm offer another 550 mm length to the back
Handrail short	cos103867	very short handrails straight (length: 17 cm, 2 tubes - left and right side, crossbar obligatory)
Handrail crossbar	cos102426	crossbar B inside approx. 698mm with fixation clamps for handrail D= 60mm, for pluto® models with running surface 150/50 cm

arm support & accessories	order number	
Adjustable arm supports with scale (0° handrail shape)	cos12013-01	for models with running surface 170&190/65 and 150/50 cm with short and long handrail
Arm supports for handrails adjustable	cos102560	Forearm support with hand grip for adjustable handrails cos102010, cos102550 und cos102551 (originally equipped!)
Additional stop-button right	cos101017	stop-button for hand grip in the arm support, right hand side
Additional stop-button left	cos101018	stop-button for hand grip in the arm support, left hand side
Additional keyboard with magnet holder MCU5	cos100815-02	mobile remote control with 6 keys with a approx. 2 m coiled cord - with magnet holder for all handrails, for all MCU5-devices
Additional keyboard with magnet holder UserTerminal 10,1" Touch	cos104551	mobile remote control with 6 keys with a approx. 2 m coiled cord - with magnet holder for all handrails
Extension cable for additional keyboard	cos100816-01	Spiral cable extendable to 1,6 meters
Mount for additional keyboard on arm supports	cos10111-03	holder for the additional keyboard [cos100815-02] on adjustable arm supports (if ordered)

safety systems	order number	
Safety arch 50 with harness & chest belt / stop function	cos10079-01va01	fall protection for all applications (mandatory for high risk applications); running surface 50 cm wide
Safety arch 50 upgrade h=220 cm	cos14424-01	upgrade for safety arch for users up to 220 cm; for running surface 50 cm wide
Chest belt XXS for safety arch	cos14903-04-XXS	chest belt for safety arch, size XXS (chest measurement: 45-65 cm), colour code orange
Chest belt XS for safety arch	cos14903-04-XS	chest belt for safety arch, size XS (chest measurement: 55-75 cm), colour code black
Chest belt S for safety arch	cos14903-04-S	chest belt for safety arch, size S (chest measurement: 65-95 cm), colour code red
Chest belt M for safety arch	cos14903-04-M	chest belt for safety arch, size M (chest measurement: 85-115 cm), colour code blue
Chest belt L for safety arch	cos14903-04-L	chest belt for safety arch, size L (chest measurement: 105-135 cm), colour code yellow
Chest belt XL for safety arch	cos14903-04-XL	chest belt for safety arch, size XL (chest measurement: 125-155 cm), colour code green
Rope 4.3m (replacement) for [cos10079-01] & [cos10170-01 - cos10173-01]	cos10670-02	rope (replacement) for safety arch; to be replaced every 24 months or at the first sign of wear
Fall prevention system for ceiling mount with emergency stop	cos15866-01	safety device for ceiling mount including fall prevention with emergency stop function for treadmill's running belt
Fall prevention system for ceiling mount without emergency stop	cos15866-01ws	safety device for ceiling mount including fall prevention without emergency stop function for treadmill's running belt
Rope 10m (replacement) for [cos15866-01] & [cos15866-01ws]	cos101729-01	rope (replacement) for fall prevention system for ceiling mount ; to be replaced every 24 months or at the first sign of wear
Magnet with ripcord incl. plastic clip (spare part)	cos101699-03	safety stop lanyard pull-cord with magnet (only spare part "magnet, cord and clip", not the integrated contact switch)
Emergency stop-button with magnet holder + 5 m spiral cable	cos101418-02	and Velcro-Strip for safety reasons. Jack at this treadmill is prerequisite! Quote treadmill serial no. for refitting.
Emergency stop-button with magnet holder + 10 m spiral cable	cos100548	and Velcro-Strip for safety reasons. Jack at this treadmill is prerequisite! Quote treadmill serial no. for refitting.
Footboard extra wide (both sides) 150/50	cos103928	for therapy, diagnostics and safe on and off stepping for gait t training and diagnostics

unweighting systems	order number	partial body weight support (unweighting / weight relief) systems. airwalk® ... adjustable gravityTM (all options see airwalk ap)
airwalk® ap	cos30028	unweighting device dynamic up to ca. 70 kg, compressor or compressed air supply required (max. 250 kg / 551 lbs body weight), incl. chest belt size M
airwalk® ap lt	cos30028-lt	individual special design without metal arches, for ceiling mount, e.g. for 3D motion analysis
Compressor for airwalk® ap, 10 bar	cos103275	air compressor for airwalk® ap, 10 bar - incl. noise cancelling hood
Compressor for airwalk® ap, 8 bar	cos103058	air compressor for airwalk® ap, 8 bar
Option emergency stop for airwalk® ap	cos102342-01	additional function of airwalk ap also as fall prevention system (safety arch) with autom. treadmill belt stop
Option AirCushion mode for airwalk® ap	cos102489	additional valve (mode switch) for airwalk ap for "balancing" the subject. Air cylinder works as "air cushion"; in cos102342-01 already included.
Extension sling set 60 cm for h/p/cosmos airwalk®	cos100432-01	i.e. for small subjects (children) in airwalk vest XS for h/p/cosmos airwalk®
Express sling/loop 18 cm	cos102785-01	1x express sling/loop 18 cm for extension of pulling rope
Special colour airwalk® ap	cos102844	special colour / powder coating airwalk® ap
Vest XXS for h/p/cosmos airwalk® (all models)	cos10095-vest-XXS	vest for h/p/cosmos airwalk®, size XXS (thorax circumference: 62-75 cm), colour code orange
Vest XS for h/p/cosmos airwalk® (all models)	cos10095-vest-XS	vest for h/p/cosmos airwalk®, size XS (thorax circumference: 76-84 cm), colour code white
Vest S for h/p/cosmos airwalk® (all models)	cos10095-vest-S	vest for h/p/cosmos airwalk®, size S (thorax circumference: 85-92 cm), colour code red
Vest M for h/p/cosmos airwalk® (all models)	cos10095-vest-M	vest for h/p/cosmos airwalk®, size M (thorax circumference: 93-105 cm), colour code yellow
Vest L for h/p/cosmos airwalk® (all models)	cos10095-vest-L	vest for h/p/cosmos airwalk®, size L (thorax circumference: 106-114 cm), colour code green
Vest XL for h/p/cosmos airwalk® (all models)	cos10095-vest-XL	vest for h/p/cosmos airwalk®, size XL (thorax circumference: 116-130 cm), colour code blue
Neoprene shorts S for h/p/cosmos airwalk® (all models)	cos10095-neo-S	neoprene shorts for airwalk®, size S (waist: 55-92 cm)
Neoprene shorts M for h/p/cosmos airwalk® (all models)	cos10095-neo-M	neoprene shorts for airwalk®, size M (waist: 93-105 cm)
Neoprene shorts L for h/p/cosmos airwalk® (all models)	cos10095-neo-L	neoprene shorts for airwalk®, size L (waist: 106-114 cm)
Neoprene shorts XL for h/p/cosmos airwalk® (all models)	cos10095-neo-XL	neoprene shorts for airwalk®, size XL (waist: 115 - 123 cm)

robowalk® expander systems	order number	
robowalk® expander front 150/50 with safety arch [cos10079-01]	cos30022-02va06	for the front area - for h/p/cosmos treadmills with running surface 150/50 cm with safety arch
robowalk® expander front airwalk® ap	cos30022-02va04	for the front area - for all h/p/cosmos treadmills with optional h/p/cosmos airwalk® ap
robowalk® expander back (rear)	cos30023-03	for the rear area - for all h/p/cosmos treadmills
Leg cuff thigh S, 1 pair	cos101050-S	accessory for robowalk® expander; size S (250-390 mm)
Leg cuff thigh M, 1 pair	cos101050-M	accessory for robowalk® expander; size M (350-510 mm)
Leg cuff thigh L, 1 pair	cos101050-L	accessory for robowalk® expander; size L (490-750 mm)
Leg cuff shank, 1 pair	cos101051-XS	accessory for robowalk® expander; size XS (140-270 mm)
Mounting-bracket-set robowalk® expander front	cos101355va07	Please quote the serial number and model of h/p/cosmos treadmill on the order!
robowalk® manual pulling unit with 125 cm expander rope	cos101745	1 pair of expander manual pulling units 125 cm (incl. 1 noose and 1 thigh cuff)
Universal noose robowalk	cos101748	universal noose robowalk

wheelchair ramps	order number	
Wheelchair ramp for treadmill 150/50	cos16186-02	wheelchair ramp (L: 125 cm x W: 80 cm) for models with running surface 150/50 cm (pluto, mercury, locomotion)

zebris® - motion analysis / biomechanics	order number	PC, monitor and mounting not included, must be ordered separately
zebris® FDM pressure measuring platform 2i upgrade for mercury running deck 150/50, without treadmill	cos100990-01	option pressure distribution platform 111.8 x 49.5 cm, 3.432 sensors, 120 Hz, price only valid for initial fitting-out, incl. software zebris FDM for gait analysis
zebris® FDM pressure measuring platform 3i upgrade for mercury running deck 150/50, without treadmill	cos102291-01	option pressure distribution platform 108.4 x 47.4 cm, 7.168 sensors, 120 Hz, price only valid for initial fitting-out, incl. software zebris FDM for gait analysis
zebris® modular extension with 120 Hz for running deck 150/50	cos101733	extension (must be ordered with the treadmill!) from standard 120 Hz by further 120 Hz to 240 Hz sampling rate in total
zebris® SyncCam HS (HS camera without tripod)	cos100385i	video camera 60 fps Full HD (1920x1080), 90 fps HD (1920x720), 120fps VGA (640x480)
zebris® SyncCam (camera without stand)	cos100385d	video camera 30 Hz, synchronization cable, USB cable and power supply - without light system
zebris® SyncLightCam (camera and LED light without stand)	cos100385a	camera 30 Hz and lighting unit with 10 power LEDs incl. software driver, synchronisation cable, USB cable and power supply unit
zebris® stand for SyncCam or SyncLightCam (mobile)	cos100385b	mobile stand for SyncCam and SyncLightCam with integrated cable fixation
zebris® FDM-Stance Module	cos100384	extra software module for stance and balance analysis for instrumented biomechanic treadmill and for platform stand alone
zebris® Stand for SyncCamLight (not mobile)	cos103311	non-mobile tripod for camera and lighting system with integrated cable fixation
zebris® software-module Running Analysis	cos104494	Software module for the parameterisation of the movement phases, the geometry, the timing, as well as the essential force and pressure parameters of the running movement. A COP analysis is carried out according to trajectory, density and speed.
zebris® visual stimulation upgrade for 150/50 (Rehawk®)	cos101291-01	video projector, mounting and software for gait training through step projection on h/p/cosmos treadmill 150/50 cm
zebris® software-module virtual training (without monitor)	cos101062	interactive gait training on a virtual forest path incl. five gait modules in different levels of difficulty for augmented feedback on the instrumented h/p/cosmos treadmill (without monitor, without stand)
zebris® module editor virtual training "forest walk"	cos102521	Upgrade for [cos101062], Editor to integrate obstacles with different degrees of difficulty on the treadmill for augmented feedback.
zebris® software-module virtual environment (without monitor)	cos104587	interactive gait training on a virtual forest path incl. three gait modules in different levels of difficulty for augmented feedback on the instrumented h/p/cosmos treadmill (without monitor, without stand) (for sports)
zebris® virtual running environment	cos104616	Software module for moving along a virtual training track.
zebris® software-Extension LiveGait®	cos104588	Real-time display of various gait parameters during walking on the treadmill. Feedback training by setting reference values
zebris® software-Extension 7-Zones Report	cos104589	Softwareextension for dividing the foot load surface area of the left and right side of the body into 7 zones
zebris® software-Extension Live Mode	cos104590	Real-time display of various gait parameters during running on the treadmill. Feedback training by setting reference values. Only in combination with zebris® software-module [cos14494] Running Analysis Running Analysis possible.
zebris® Optical Marker Tracking	cos104591	Add-On-Module for FDM-T system for kinematic movement analysis of one body side. The set contains 10 passive markers 1 package of adhesive patches (20 x 5 mm, 500 pieces) for proper fixation of the markers, including software extension. For using the Add-On-Module the 01540194 / SYNCLightCam is preconditioned as well as an updated version of software zebris FDM.
Microgate® - LED optical gait analysis / bio feedback	order number	All options see microgate.
Optogait Kit 1m single meter	cos102065	OptoGait is an optical measuring system consisting of a transmitting and a receiving measuring bar. Content: 1xTX, 1xRX bar with interface, 2 webcams, 2 tripods, USB cable, power supply, software, bag for 1 meter. PC or laptop required.
Optofix mounting Optogait / Optojump on the treadmill	cos103386	Holder system with magnets for Optojump / Optogait bar to mount it on h/p/cosmos treadmill (not for extra wide footboards). This set consists of 4 fastening profiles. For one bar 2 fastening profiles. Optogait / Optojump bar is NOT included in this item!

IT, computer & visualisation	order number	
h/p/cosmos satellite PC med	cos14970-03	DELL PC, 2x 24" LED Monitor, COOL Laser printer, potential isolation transformer, h/p/cosmos PC-rack with 4 casters
h/p/cosmos satellite PC med LC	cos14970-03_LC	PC minilower without on-site support, 2 pcs. 24" LED monitor, potential isolation transformer, h/p/cosmos PC-rack with 4 casters
h/p/cosmos satellite Notebook	cos15686-01	DELL notebook, potential isolation transformer, h/p/cosmos PC-rack with 4 casters
DELL Laptop Computer	cos13476-01	technical details and specification on request
Labour costs per hour system specialist & software	cos60098010004	service engineer system specialist and software for installation, maintenance and repairs in the factory h/p/cosmos.
h/p/cosmos PC-rack of steel, without PC, without devices	cos15033-03	ergonomically designed PC-rack in pure white (RAL-colour 9010) of powder coated steel in h/p/cosmos-design
LED monitor TV 50" (with a small monitor stand for table)	cos102397	for example for SpeedLab®, gateway® display or for the virtual training module of zebris®
Monitor stand mobile for LCD TV 32-60"	cos101624	monitor stand (without monitor!) for additional TV / monitor (max. load: 30 kg), height: 180 cm.
Wall mount for LCD monitor TV 32-65"	cos101627	wall mount (without monitor!) for additional TV / monitor 32-65"
Connection cable RS232 5 m	cos00097010034	RS232, 5 m (Sub-D 9-pin male/female), USB-Adapter optionally available (cos12769-01)
Connection cable RS232 10 m	cos00097010035	RS232, 10 m (Sub-D 9-pin male/female), USB-Adapter optionally available (cos12769-01)
USB to RS232 converter	cos12769-01	converter from USB to serial port RS232 (Sub-D 9-pin male)

lactate measurement, supplies & software	All options see options, accessories.
motion & gait analysis	All options see gaitway, noraxon, zebris.
options	All options see options, accessories.

In case of retrofitting of options and accessories, prices will be higher than indicated in the price list. Please specify device, model and serial number for a detailed quotation. Not all options and accessories are available for all models.

packing pallet & cardboard hood	order number	export packing, stackable packing: 90 EURO surcharge	measurements L / W / H
Packing treadmill 150/50, full assembled	cos102522va04	packed full assembled on pallet with cardboard hood	230 / 109 / 169 cm
Packing treadmill 150/50, part assembled	cos102522va01	packed part assembled on pallet with cardboard hood	230 / 109 / 87 cm
Packing treadmill 150/50 (SA), part assembled	cos102522va03	packed part assembled on pallet with cardboard hood, incl. safety arch	274 / 122 / 94 cm
Packing airwalk® ap, part assembled	cos102538-02va02	packed part assembled on pallet with cardboard hood	230 / 109 / 90 cm
packing wooden box	order number	export packing	measurements L / W / H
Packing treadmill 150/50, part assembled	cos102522-01va04	packed part assembled in a wooden box	230 / 110 / 98 cm
Packing treadmill 150/50 (SA), part assembled	cos102522-01va06	packed part assembled in a wooden box, incl. safety arch	274 / 122 / 103 cm
Packing treadmill 150/50 (SA), full assembled	cos102522-01va07	packed part assembled in a wooden box, incl. safety arch	274 / 122 / 163 cm
Packing airwalk® ap, part assembled	cos102538-02va03	packed part assembled in a wooden box	230 / 109 / 90 cm

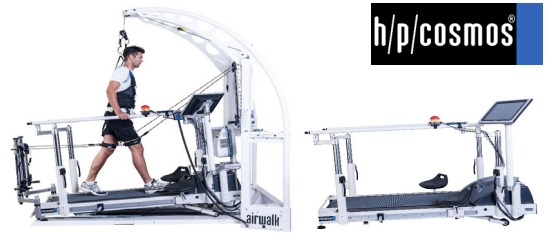
transport, installation & instruction, labour	order number	
Sea water proof (option) 150/50, 170&190/65	cos10052	additional labour costs for sea water proof packing
Inst. & Instruction treadmill 150/50 EU	cos15732-eu	Installation in Europe onsite at customer's facility, incl. traveling, hotel, labour costs and training
Inst. & Instruction treadmill 150/50 OS	cos15732-os	Installation Overseas onsite at customer's facility, incl. traveling, hotel, labour costs and training
Inst. & Instr. h/p/cosmos airwalk ap EU	cos100925-eu	Installation Europe onsite at customer's facility, incl. traveling, hotel, labour costs and training
Inst. & Instr. h/p/cosmos airwalk ap OS	cos100925-os	Installation Overseas onsite at customer's facility, incl. traveling, hotel, labour costs and training
Labour costs per hour for service engineer	cos60098010001	service engineer for installation, maintenance and repairs
Labour costs per hour system specialist & software	cos60098010003	service engineer system specialist and software for installation, maintenance and repairs at the customer's site.
1-day application workshop	cos101094	includes costs for specialist / referent, not included flight, logistics, hotel, etc. (need to be charged separately)
Trolley for treadmill 150/50 & 170&190/65	cos16692	means of transportation: handle with 2 wheels and lifting-help for a simple moving of the treadmill

retrofits & maintenances	order number	
Safety arch 50 with harness & chest belt / stop function	cos10079-01retva01	fall protection for all applications (mandatory for high risk applications); running surface 50 cm wide incl. packaging pallet
Handrail pediatric (standard version)	cos102400-01retva01	Pediatric handrail with cross- & side bar, variable grip height min. 413 mm / max. 820 mm above running surface / length: 620 mm
Handrail pediatric (long version)	cos102400-01retva02	Pediatric handrail with cross- & side bar, variable grip height min. 413 mm / max. 820 mm above running surface / length: 1.540 mm
Handrail long	cos102918-01ret	long handrails straight for 150/50 pluto® and mercury® models with running surface 150/50 cm (not for USA/Canada)
Handrail crossbar for 150/50 pluto® & mercury®	cos102426ret	crossbar B inside approx. 698mm with fixation clamps for handrail D= 60mm, for pluto® models with running surface 150/50 cm
1 time maintenance + safety check	cos60000110029	for treadmill series pluto/med bis mercury/med
Reverse belt rotation (downhill) 150/50 with UserTerminal 10,1" Touch	cos101000_reverseva04	for mercury® models with running deck 150/50 cm, max. reverse speed: 5 km/h, limitation not applicable when safety arch is used

treadmill locomotion (running surface 150/50 & 190/65)

specifications standard version:

running surface:	150 x 50 cm (150/50), 190 x 65 cm (190/65)
speed:	0 ... 10 km/h (150/50), 0 ... 25 km/h (190/65)
elevation:	-25 ... 25% with reverse belt rotation included
handrail standard:	adjustable handrail with gas pressure spring infinitely adjustable
User Terminal:	touch panel can be rotated either left or right, magnetic remote control with spiral cable
special equipment:	adjustable therapist seats and footrests (both sides), motor brake
running belt:	special running belt with rubber profile, 5 mm



medical

h/p/cosmos® treadmills	order number	running surface l/w	speed	elevation	power supply *	UserTerminal display	CE
locomotion® 150/50 DE med	cos30001-01va02	150 / 50 cm	0 ... 10 km/h	-25 ... +25 %	230 Volt AC 1~ / 15 Amp.	15,6" touch	CE 0123
locomotion® 190/65-3p DE med	cos30024va04	190 / 65 cm	0 ... 25 km/h	-25 ... +25 %	400 Volt AC 3~ / 15 Amp.	15,6" touch	CE 0123

* We recommend a dedicated line 3 phase power connection (400 Volt AC3~NPE 50/60 Hz 16 to 32A fuse) and 3-phase device for high speed, fast acceleration, special applications and for heavier subjects due to higher performance. For all single phase powered treadmills the natural performance

Limitations of single phase voltage supply apply due to the law of physics. For professional performance diagnostics, athletic training and high performance applications we strongly recommend running machines with 3-phase voltage power supply from model size min, pulsar 3p, venus or salum.

treadmill upgrades

treadmill upgrades	order number	
Special speed* 0 - 22 km/h für 150/50 locomotion®	cos101303	for locomotion® with running surface 150/50 cm
Running belt with middle marking for motion analysis 150/50	cos14288va02	routed middle marking approx.5 mm / for models with running surface 150/50 cm; for pluto a special running belt (cos15132_LC) is additional necessary!
Running belt with middle marking for motion analysis 190/65	cos14168va02	routed middle marking approx.5 mm / for models with running surface 190/65 cm
Special colour treadmill frame in RAL	cos102465ralxxx_	all special (RAL) colours; free of charge for orders of 5 or more for locomotion
Special matt design for motion analysis	cos103019	frame colour RAL 9005 deep black (powder coated, non-shiny) to reduce reflections on the treadmill frame
POLAR Sender T34 Set (extended Range)	cos15178	POLAR T34 chest belt transmitter
POLAR Heart Rate Monitor Set OH1 arm belt	cos101787_OH1	optical pulse sensor, 6 LED system Bluetooth transmitter + arm strap, for devices with UserTerminal Touch and locomotion
POLAR® HeartRate Sensor H10 Wearlink® Bluetooth Smart	cos101787-01	wireless transmitter including chest belt size M-XXL, for smartphones, iPhone (from iPhone 4S, iOS 5.1) and bluetooth receiver in computer
chest belt POLAR HR M-XXL Pro for WIND+H10	cos100420c-02	Strap Pro Chest M-XXL BLK (without transmitter)
POLAR Heart RateSensor H10	cos101787-01a	POLAR heart rate sensor H10 without chest strap, with Bluetooth for devices with UserTerminal Touch and locomotion

arm support

arm support & accessories	order number	
Arm supports for handrails adjustable	cos102560	Forearm support with hand grip for adjustable handrails cos102010, cos102550 und cos102551 (originally equipped!)**
Additional stop-button right	cos101107	stop-button for hand grip in the arm support, right hand side
Additional stop-button left	cos101108	stop-button for hand grip in the arm support, left hand side
Additional keyboard with magnet holder MCU5	cos100815-02	mobile remote control with 6 keys with a approx. 2 m coiled cord - with magnet holder for all handrails, for all MCU5-devices
Extension cable for additional keyboard	cos100816-01	Spiral cable extendable to 1,6 meters
Mount for additional keyboard on arm supports	cos101111-03	holder for the additional keyboard [cos100815-02] on adjustable arm supports (if ordered)

safety systems

safety systems	order number	
Safety arch 50 with harness & chest belt / stop function	cos10079-01va01	fall protection for all applications (mandatory for high risk applications); running surface 50 cm wide
Safety arch 65 with harness & chest belt / stop function	cos10079-01va02	fall protection for all applications (mandatory for high risk applications); running surface 65 cm wide
Chest belt XXS for safety arch	cos14903-04-XXS	chest belt for safety arch, size XXS (chest measurement: 45-65 cm), colour code orange
Chest belt XS for safety arch	cos14903-04-XS	chest belt for safety arch, size XS (chest measurement: 55-75 cm), colour code black
Chest belt M for safety arch	cos14903-04-M	chest belt for safety arch, size M (chest measurement: 85-115 cm), colour code blue
Chest belt L for safety arch	cos14903-04-L	chest belt for safety arch, size L (chest measurement: 105-135 cm), colour code yellow
Chest belt L for safety arch	cos14903-04-L	chest belt for safety arch, size L (chest measurement: 105-135 cm), colour code yellow
Chest belt XL for safety arch	cos14903-04-XL	chest belt for safety arch, size XL (chest measurement: 125-155 cm), colour code green
Safety arch 50 upgrade h=220 cm	cos14424-01	upgrade for safety arch for users up to 220 cm; for running surface 50 cm wide
Rope 4.3m (replacement) for [cos10079-01] & [cos10170-01 - cos10173-01]	cos10670-02	rope (replacement) for safety arch; to be replaced every 24 months or at the first sign of wear
Fall prevention system for ceiling mount with emergency stop	cos15866-01	safety device for ceiling mount including fall prevention with emergency stop function for treadmill's running belt
Fall prevention system for ceiling mount without emergency stop	cos15866-01ws	safety device for ceiling mount including fall prevention without emergency stop function for treadmill's running belt
Rope 10m (replacement) for [cos15866-01] & [cos15866-01ws]	cos101729-01	rope (replacement) for fall prevention system for ceiling mount; to be replaced every 24 months or at the first sign of wear
Magnet with ripcord incl. plastic clip (spare part)	cos101699-03	safety stop lanyard pull-cord with magnet (only spare part "magnet, cord and clip", not the integrated contact switch)

unweighting systems

unweighting systems	order number	partial body weight support (unweighting / weight relief) systems. airwalk® ... adjustable gravityTM (all options see airwalk ap)
airwalk® ap	cos30028	unweighting device dynamic up to ca. 70 kg, compressor or compressed air supply required (max. 250 kg / 551 lbs body weight), incl. chest belt size M
airwalk® ap lt	cos30028-t	individual special design without metal arches, for ceiling mount, e.g. for 3D motion analysis
Compressor for airwalk® ap, 10 bar	cos103275	air compressor for airwalk® ap, 10 bar - incl. noise cancelling hood
Compressor for airwalk® ap, 8 bar	cos103058	air compressor for airwalk® ap, 8 bar
Option emergency stop for airwalk® ap	cos102342-01	additional function of airwalk ap also as fall prevention system (safety arch) with autom. treadmill belt stop
Option AirCushion mode for airwalk® ap	cos102489	additional valve (mode switch) for airwalk ap for "balancing" the subject. Air cylinder works as "air cushion"; in cos102342-01 already included.
Extension sling set 60 cm for h/p/cosmos airwalk®	cos100432-01	i.e. for small subjects (children) in airwalk vest XS for h/p/cosmos airwalk®
Express sling/loop 18 cm	cos102785-01	1x express sling/loop 18 cm for extension of pulling rope
Special colour airwalk® ap	cos102844	special colour / powder coating airwalk® ap
Vest XXS for h/p/cosmos airwalk® (all models)	cos10095-vest-XXS	vest for h/p/cosmos airwalk®, size XXS (thorax circumference: 62-75 cm), colour code orange
Vest XS for h/p/cosmos airwalk® (all models)	cos10095-vest-XS	vest for h/p/cosmos airwalk®, size XS (thorax circumference: 76-84 cm), colour code white
Vest S for h/p/cosmos airwalk® (all models)	cos10095-vest-S	vest for h/p/cosmos airwalk®, size S (thorax circumference: 85-92 cm), colour code red
Vest M for h/p/cosmos airwalk® (all models)	cos10095-vest-M	vest for h/p/cosmos airwalk®, size M (thorax circumference: 93-105 cm), colour code yellow
Vest L for h/p/cosmos airwalk® (all models)	cos10095-vest-L	vest for h/p/cosmos airwalk®, size L (thorax circumference: 106-114 cm), colour code green
Vest XL for h/p/cosmos airwalk® (all models)	cos10095-vest-XL	vest for h/p/cosmos airwalk®, size XL (thorax circumference: 116-130 cm), colour code blue
Neoprene shorts S for h/p/cosmos airwalk® (all models)	cos10095-neo-S	neoprene shorts for airwalk®, size S (waist: 55-92 cm)
Neoprene shorts M for h/p/cosmos airwalk® (all models)	cos10095-neo-M	neoprene shorts for airwalk®, size M (waist: 93-105 cm)
Neoprene shorts L for h/p/cosmos airwalk® (all models)	cos10095-neo-L	neoprene shorts for airwalk®, size L (waist: 106-114 cm)
Neoprene shorts XL for h/p/cosmos airwalk® (all models)	cos10095-neo-XL	neoprene shorts for airwalk®, size XL (waist: 115 - 123 cm)

robowalk®	robowalk® expander systems	order number	
	robowalk® expander front 150/50 with safety arch [cos10079-01]	cos30022-02va06	for the front area - for h/p/cosmos treadmills with running surface 150/50 cm with safety arch
	robowalk® expander front airwalk® ap	cos30022-02va04	for the front area - for all h/p/cosmos treadmills with optional h/p/cosmos airwalk® ap
	robowalk® expander front 170&190/65 with safety arch [cos10079-01]	cos30022-02va07	for the front area - for all h/p/cosmos treadmills with running surface 170&190/65 cm with safety arch
	robowalk® expander back (rear)	cos30023-03	for the rear area - for all h/p/cosmos treadmills
	Leg cuff thigh S, 1 pair	cos101050-S	accessory for robowalk® expander; size S (250-390 mm)
	Leg cuff thigh M, 1 pair	cos101050-M	accessory for robowalk® expander; size M (350-510 mm)
	Leg cuff thigh L, 1 pair	cos101050-L	accessory for robowalk® expander; size L (490-750 mm)
	Leg cuff shank, 1 pair	cos101051-XS	accessory for robowalk® expander; size XS (140-270 mm)
	Mounting-bracket-set robowalk® expander front for locomotion 150/50	cos101355va05	Please quote the serial number and model of h/p/cosmos treadmill on the order!
	robowalk® manual pulling unit with 125 cm expander rope	cos101745	1 pair of expander manual pulling units 125 cm (incl. 1 noose and 1 thigh cuff)
	Universal noose robowalk	cos101748	universal noose robowalk

ramps	wheelchair ramps	order number	
	Wheelchair ramp for treadmill 150/50	cos16186-02	wheelchair ramp (L: 125 cm x W: 80 cm) for models with running surface 150/50 cm (pluto, mercury, locomotion)
	Wheelchair ramp for treadmill 170&190/65	cos14664-03	wheelchair ramp (L: 130 cm x W: 101 cm) for models with running surface 170&190/65 cm

motion analysis, biomechanics	zebris® - motion analysis / biomechanics	order number	PC, monitor and mounting not included, must be ordered separately
	zebris® FDM pressure measuring platform 2i upgrade for locomotion running deck 150/50, without treadmill	cos100990	option pressure distribution platform 111.8 x 49.5 cm, 3.432 sensors, 120 Hz, price only valid for initial fitting-out, incl. software zebris FDM for gait analysis
	zebris® FDM pressure measuring platform 3i upgrade for locomotion running deck 150/50, without treadmill	cos102291	option pressure distribution platform 108.4 x 47.4 cm, 7.168 sensors, 120 Hz, price only valid for initial fitting-out, incl. software zebris FDM for gait analysis
	zebris® FDM pressure measuring platform 2i upgrade for running deck 190/65, without treadmill	cos102294	option pressure distribution platform 162.6 x 55.9 cm, 5.632 sensors, 100 Hz, price only valid for initial fitting-out, incl. software zebris FDM for gait analysis
	zebris® FDM pressure measuring platform 3i upgrade for running deck 190/65, without treadmill	cos101629	option pressure distribution platform 162.6 x 54.2 cm, 12.288 sensors, 100 Hz, price only valid for initial fitting-out, incl. software zebris FDM for gait analysis
	zebris® modular extension with 120 Hz for running deck 150/50	cos101733	extension (must be ordered with the treadmill!) from standard 120 Hz by further 120 Hz to 240 Hz sampling rate in total
	zebris® modular extension with 100 Hz for running deck 190/65	cos103308	extension (must be ordered with the treadmill!) from standard 100 Hz by each further 100 Hz to max. 300 Hz sampling rate in total
	zebris® SyncCam HS (HS camera without tripod)	cos100385f	video camera 60 fps Full HD (1920x1080), 90 fps HD (1920x720), 120fps VGA (640x480)
	zebris® SyncCam (camera without stand)	cos100385d	video camera 30 Hz, synchronization cable, USB cable and power supply - without light system
	zebris® SyncLightCam (camera and LED light without stand)	cos100385a	camera 30 Hz and lighting unit with 10 power LEDs incl. software driver, synchronisation cable, USB cable and power supply unit
	zebris® stand for SyncCam or SyncLightCam (mobile)	cos100385b	mobile stand for SyncCam and SyncLightCam with integrated cable fixation
	zebris® Stand for SyncCamLight (not mobile)	cos103311	non-mobile tripod for camera and lighting system with integrated cable fixation
	zebris® FDM-Stance Module	cos100384	extra software module for stance and balance analysis for instrumented biomechanic treadmill and for platform stand alone
	zebris® software-module Running Analysis	cos104494	Software module for the parameterisation of the movement phases, the geometry, the timing, as well as the essential force and pressure parameters of the running movement. A COP analysis is carried out according to trajectory, density and speed.
	zebris® visual stimulation upgrade for 170&190/65 (Rehawalk®)	cos101657-01	video projector, mounting and software for gait training through step projection on h/p/cosmos treadmill 170&190/65 cm
	zebris® visual stimulation upgrade for locomotion (Rehawalk®)	cos101730	video projector, mounting and software for gait training through step projection on h/p/cosmos treadmill locomotion 150/50 cm
	zebris® software-module virtual training (without monitor!)	cos101062	interactive gait training on a virtual forest path incl. five gait modules in different levels of difficulty for augmented feedback on the instrumented h/p/cosmos treadmill (without monitor, without stand)
	zebris® module editor virtual training "forest walk"	cos102521	Upgrade for [cos101062]. Editor to integrate obstacles with different degrees of difficulty on the treadmill for augmented feedback.
	zebris® software-module virtual environment (without monitor!)	cos104587	interactive gait training on a virtual forest path incl. three gait modules in different levels of difficulty for augmented feedback on the instrumented h/p/cosmos treadmill (without monitor, without stand) (for sports)
	zebris® virtual running environment	cos104616	Software module for moving along a virtual training track.
	zebris® software-Extension LiveGait®	cos104588	Real-time display of various gait parameters during walking on the treadmill. Feedback training by setting reference values
	zebris® software-Extension 7-Zones Report	cos104589	Softwareextension for dividing the foot load surface area of the left and right side of the body into 7 zones
	zebris® software-Extension Live Mode	cos104590	Real-time display of various gait parameters during running on the treadmill. Feedback training by setting reference values. Only in combination with zebris® software-module [cos14494] Running Analysis Running Analysis possible.
	zebris® Optical Marker Tracking	cos104591	Add-On-Module for FDM-T system for kinematic movement analysis of one body side. The set contains 10 passive markers 1 package of adhesive patches (20 x 5 mm, 500 pieces) for proper fixation of the markers, including software extension. For using the Add-On-Module the 01540194 / SYNCLightCam is preconditioned as well as an updated version of software zebris FDM.

IT, computer & visualisation	IT, computer & visualisation	order number	
	h/p/cosmos satellite PC med	cos14970-03	DELL PC, 2x 24" LED Monitor, COL Laser printer, potential isolation transformer, h/p/cosmos PC-rack with 4 casters
	h/p/cosmos satellite PC med LC	cos14970-03_LC	PC minitower without on-site support, 2 pcs. 24" LED monitor, potential isolation transformer, h/p/cosmos PC-rack with 4 casters
	h/p/cosmos satellite Notebook	cos15686-01	DELL notebook, potential isolation transformer, h/p/cosmos PC-rack with 4 casters
	DELL Laptop Computer	cos13476-01	technical details and specification on request
	Labour costs per hour system specialist & software	cos60098010004	service engineer system specialist and software for installation, maintenance and repairs in the factory h/p/cosmos.
	h/p/cosmos PC-rack of steel, without PC, without devices	cos15033-03	ergonomically designed PC-rack in pure white (RAL-colour 9010) of powder coated steel in h/p/cosmos-design
	LED monitor TV 50" (with a small monitor stand for table)	cos102397	for example for SpeedLab®, gateway® display or for the virtual training module of zebris®
	Monitor stand mobile for LCD TV 32-60"	cos101624	monitor stand (without monitor!) for additional TV / monitor (max. load: 30 kg), height: 180 cm.
	Wall mount for LCD monitor TV 32-65"	cos101627	wall mount (without monitor!) for additional TV / monitor 32-65"
	Connection cable RS232 5 m	cos00097010034	RS232, 5 m (Sub-D 9-pin male/female), USB-Adapter optionally available (cos12769-01)
	Connection cable RS232 10 m	cos00097010035	RS232, 10 m (Sub-D 9-pin male/female), USB-Adapter optionally available (cos12769-01)
	USB to RS232 converter	cos12769-01	converter from USB to serial port RS232 (Sub-D 9-pin male)

others	motion & gait analysis		All options see gateway, noraxon, zebris.
	options		All options see options, accessories.

In case of retrofitting of options and accessories, prices will be higher than indicated in the price list. Please specify device, model and serial number for a detailed quotation. Not all options and accessories are available for all models.

packing pallet & cardboard hood	order number	export packing, stackable packing: 90 EURO surcharge	measurements L / W / H
Packing running machine 150/50, full assembled	cos10084	packed full assembled on pallet with cardboard hood for 150/50 locomotion®	230 / 109 / 169 cm
Packing treadmill 170&190/65 (SA), part assembled	cos10177	packed part assembled on pallet with cardboard hood, incl. safety arch	274 / 122 / 94 cm
Packing airwalk® ap, part assembled	cos102538-02va02	packed part assembled on pallet with cardboard hood	230 / 109 / 90 cm
packing wooden box	order number	export packing	measurements L / W / H
Packing treadmill 150/50, full assembled	cos100730	packed full assembled in a wooden box	230 / 109 / 175 cm
Packing treadmill 170&190/65 (SA), full assembled	cos10006	packed full assembled in a wooden box, incl. safety arch	274 / 122 / 163 cm
Packing airwalk® ap, part assembled	cos102538-02va03	packed part assembled in a wooden box	230 / 109 / 90 cm

transport, installation & instruction, labour	order number	
Sea water proof (option) 150/50, 170&190/65	cos10052	additional labour costs for sea water proof packing
Inst. & Instruction treadmill 150/50 EU	cos15732-eu	Installation in Europe onsite at customer's facility, incl. traveling, hotel, labour costs and training
Inst. & Instruction treadmill 150/50 OS	cos15732-os	Installation Overseas onsite at customer's facility, incl. traveling, hotel, labour costs and training
Inst. & Instr. h/p/cosmos airwalk ap EU	cos100925-eu	Installation Europe onsite at customer's facility, incl. traveling, hotel, labour costs and training
Inst. & Instr. h/p/cosmos airwalk ap OS	cos100925-os	Installation Overseas onsite at customer's facility, incl. traveling, hotel, labour costs and training
Labour costs per hour for service engineer	cos60098010001	service engineer for installation, maintenance and repairs
Labour costs per hour system specialist & software	cos60098010003	service engineer system specialist and software for installation, maintenance and repairs at the customer's site.
1-day application workshop	cos101094	includes costs for specialist / referent, not included flight, logistics, hotel, etc. (need to be charged separately)
Trolley for treadmill 150/50 & 170&190/65	cos16692	means of transportation: handle with 2 wheels and lifting-help for a simple moving of the treadmill

treadmill quasar sport / med (running surface 170/65)



specifications standard version:

running surface: 170 x 65 cm
 speed: 0 ... 25 km/h
 elevation: 0 ... 28%
 handrail standard: 50% running deck length, plug-in-system, crossbar
 UserTerminal: console front right at handrail
 running belt: special running belt with rubber profile, 5 mm



medical

h/p/cosmos® treadmills	order number	running surface l/w	speed	elevation	power supply *	UserTerminal display	CE
quasar® med 3p, with MCU5 (6 displays)	cos30003va26	170 / 65 cm	0 ... 40 km/h	0 ... 28 %	400 Volt AC 3~ / 15 Amp.	yes	CE 0123
stellar® med, with UserTerminal 10,1" TouchPro	cos30003-01va06	170 / 65 cm	0 ... 25 km/h	0 %	230 Volt AC 1~ / 15 Amp.	10,1" touch & keyboard	CE 0123
quasar® med, with UserTerminal 10,1" TouchPro	cos30003-01va02	170 / 65 cm	0 ... 25 km/h	0 ... 28 %	230 Volt AC 1~ / 15 Amp.	10,1" touch & keyboard	CE 0123

sports

h/p/cosmos® treadmills	order number	running surface l/w	speed	elevation	power supply *	UserTerminal display	CE
stellar®, with UserTerminal 10,1" TouchPro	cos30003-01va05	170 / 65 cm	0 ... 25 km/h	0 %	230 Volt AC 1~ / 15 Amp.	10,1" touch & keyboard	CE
quasar®, with UserTerminal 10,1" TouchPro	cos30003-01va01	170 / 65 cm	0 ... 25 km/h	0 ... 28 %	230 Volt AC 1~ / 15 Amp.	10,1" touch & keyboard	CE

* We recommend a dedicated line 3 phase power connection (400 Volt AC3-N/PE 50/60 Hz 16 to 32A fuse) and 3-phase device for high speed, fast acceleration, special applications and for heavier subjects due to higher performance. For all single phase powered treadmills the natural performance limitations of single phase voltage supply apply due to the law of physics. For professional performance diagnostics, athletic training and high performance applications we strongly recommend running machines with 3-phase voltage power supply from model size min. pulsar 3p, venus or saturn.

treadmill upgrades

treadmill upgrades	order number	
Reverse belt rotation (downhill) 170/65 with MCU5 LCD Display	cos10181-03	for models with running surface 170/65 cm, incl. belt centering rolls, max. reverse speed: 5 km/h, with safety arch: 25 km/h
Reverse belt rotation (downhill) 150/50 with UserTerminal 10,1" Touch	cos101000_reverseva05	for models with running surface 170/65 cm, incl. belt centering rolls, max. reverse speed: 5 km/h, with safety arch: 25 km/h
Special speed* 0 - 30 km/h 170-190/65	cos103975	for athletes for models with running surface 170-190/65 cm
Increased max. acceleration from max. 3.7 m/s ² to max. 4.3 m/s ²	cos103231	for quasar® 3p, pulsar® 3p, venus®, saturn®. Special parameters for inverter and MCU5, e. g. for football match simulation / sprint.
Deck hard for 170/65 (less cushioning)	cos14553	original rubber elements for shock absorption on the running deck are replaced by steel elements
Running belt with middle marking for motion analysis 170/65	cos14168va01	routed middle marking approx. 5 mm / for models with running surface 170/65 cm
Special colour treadmill frame in RAL	cos102465ralxxxx	all special (RAL) colours, free of charge for orders of 5 or more
Special matt design for motion analysis	cos103019	frame colour RAL 9005 deep black (powder coated, non-shiny) to reduce reflections on the treadmill frame
POLAR Sender T34 Set (extended Range)	cos15178	POLAR T34 chest belt transmitter
POLAR Heart Rate Monitor Set OH1 arm belt	cos101787_OH1	optical pulse sensor, 6 LED system Bluetooth transmitter + arm strap, for devices with UserTerminal Touch and locomotion
POLAR® HeartRate Sensor H10 Wearlink® Bluetooth Smart	cos101787-01	wireless transmitter including chest belt size M-XXL, for smartphones, iPhone (from iPhone 4S, iOS 5.1) and bluetooth receiver in computer
chest belt POLAR HR M-XXL Pro for WIND+H10	cos100420c-02	Strap Pro Chest M-XXL BLK (without transmitter)
POLAR Heart Rate Sensor H10	cos101787-01a	POLAR heart rate sensor H10 without chest strap, with Bluetooth for devices with UserTerminal Touch and locomotion
UserTerminal TouchPro for MCU5 remote control	cos101000relva01	desktop version with flat base, including external power supply and connection cable (10,1" TouchScreen & keyboard).
UserTerminal TouchPro for MCU5 remote control	cos101000relva02	with flange and clamp 60mm pipe for mounting on treadmill handrail; including external power supply and connection cable (10,1" TouchScreen & keyboard).
MCU5 Software Version: x.x.xxxx (latest version)	cos101000-xx.xxxxx	for treadmill with Touch & TouchPro
Environmental chamber option -35+55°C for 170/65 UserTerminal 10,1" TouchPro	cos14893-B65_1P-01va01	treadmill design for environmental chamber -35°C ... +55°C, Relative Humidity 20 ... 95% (not condensing!) special design for the usage of an h/p/cosmos treadmill 170/65
Motor brake for treadmill 170&190/65 MCU5	cos100443	Motor brake for MCU5 running machines h/p/cosmos size 170&190/65
NFC / RFID module for UserTerminal TouchPro	cos101000_NFC	reading the NFC / RFID identifier of a suitable transponder
Bluetooth for UserTerminal TouchPro	cos101000_bluetooth	wireless data transmission via bluetooth. Receiving compatible signals such as heart rate transmitters.
h/p/cosmos Perturbation Software for UserTerminal TouchPro	cos101000sw_pert-V1.0	Special software feature for sudden deceleration and acceleration of the treadmill belt speed respectively of the belt.
Bluetooth FTMS Interface for UserTerminal TouchPro	cos101000_FTMS	user terminal Bluetooth FTMS interface for connecting e.g. software Zwift or Kinomap FTMS = FITness Machine Service protocol
SmartPhone holder for UserTerminal Touch & TouchPro	cos102488_iph_vesa	mounting via vesa holder on user terminal
Activation of acceleration levels 5 ... 7	cos101000_acceleration	very high acceleration (up to 2.315 m/s ²), activation via license key
Self-controlled speed, LED software	cos101000_speed_control	belt speed is automatically adjusted according to position of subject (within predefined limits), this article only covers the required software, the additional hardware (optojump / optogait) has to be ordered separately at extra charge. Optogait 1m [cos102067]
Motor brake for treadmill 170&190/65 for UserTerminal TouchPro	cos101000_brake	motor brake for running machines h/p/cosmos size 170&190/65
Metronome	cos101000_melronome	acoustic cueing for individually setting the cadence target

handrail options

handrail options	order number	
Handrail long for 170/65	cos103876	2x long handrails straight for 170/65 quasar® (not for USA/Canada)
Handrail speed pluggable	cos103651	pluggable handrail speed with special grip for left and right side
Handrails adjustable 170/65	cos102550-01	bar length 1500 mm, locking bar for height raster 25 mm for models with running surface 170/65 cm
Extension rods for adjustable handrail 150/50 and 170/65	cos102899	the extension rods D= 25 mm offer another 550 mm length to the back
Handrail short	cos103867	very short handrails straight (length: 17 cm, 2 tubes - left and right side, crossbar obligatory)
Handrail crossbar for 170&190/65 (semi-high design)	cos15133-05-rep	crossbar 65 with fixation clamps for handrail d: 30 mm (semi-high design: 20 cm higher than handrails)

arm support

arm support & accessories	order number	
Adjustable arm supports with scale (0° handrail shape)	cos12013-01	for models with running surface 170&190/65 and 150/50 cm with short and long handrail
Arm supports for handrails adjustable	cos102560	Forearm support with hand grip for adjustable handrails cos102010, cos102550 und cos102551 (originally equipped!)*
Additional stop-button right	cos10107	stop-button for hand grip in the arm support, right hand side
Additional stop-button left	cos10108	stop-button for hand grip in the arm support, left hand side
Additional keyboard with magnet holder MCU5	cos100815-02	mobile remote control with 6 keys with a approx. 2 m coiled cord - with magnet holder for all handrails, for all MCU5-devices
Additional keyboard with magnet holder UserTerminal 10,1" Touch	cos104551	mobile remote control with 6 keys with a approx. 2 m coiled cord - with magnet holder for all handrails
Extension cable for additional keyboard	cos100816-01	Spiral cable extendable to 1,6 meters
Mount for additional keyboard on arm supports	cos10111-03	holder for the additional keyboard [cos100815-02] on adjustable arm supports (if ordered)

safety systems

safety systems	order number	
Safety arch 65 with harness & chest belt / stop function	cos10079-01va02	fall protection for all applications (mandatory for high risk applications); running surface 65 cm wide
Safety arch 65 upgrade h=220 cm	cos14425-01	upgrade for safety arch for users up to 220 cm, for running surface 65 cm wide
Chest belt XXS for safety arch	cos14903-04-XXS	chest belt for safety arch, size XXS (chest measurement: 45-65 cm), colour code orange
Chest belt XS for safety arch	cos14903-04-XS	chest belt for safety arch, size XS (chest measurement: 55-75 cm), colour code black
Chest belt S for safety arch	cos14903-04-S	chest belt for safety arch, size S (chest measurement: 65-95 cm), colour code red
Chest belt M for safety arch	cos14903-04-M	chest belt for safety arch, size M (chest measurement: 85-115 cm), colour code blue
Chest belt L for safety arch	cos14903-04-L	chest belt for safety arch, size L (chest measurement: 105-135 cm), colour code yellow
Chest belt XL for safety arch	cos14903-04-XL	chest belt for safety arch, size XL (chest measurement: 125-155 cm), colour code green
Rope 4.3m (replacement) for [cos10079-01] & [cos10170-01 - cos10173-01]	cos10670-02	rope (replacement) for safety arch; to be replaced every 24 months or at the first sign of wear
Fall prevention system for ceiling mount with emergency stop	cos15866-01	safety device for ceiling mount including fall prevention with emergency stop function for treadmill's running belt
Fall prevention system for ceiling mount without emergency stop	cos15866-01ws	safety device for ceiling mount including fall prevention without emergency stop function for treadmill's running belt
Rope 10m (replacement) for [cos15866-01] & [cos15866-01ws]	cos101729-01	rope (replacement) for fall prevention system for ceiling mount ; to be replaced every 24 months or at the first sign of wear
Magnet with ripcord incl. plastic clip (spare part)	cos101699-03	safety stop lanyard pull-cord with magnet (only spare part "magnet, cord and clip", not the integrated contact switch)
Emergency stop-button with magnet holder + 5 m spiral cable	cos101418-02	and Velcro-Strip for safety reasons. Jack at this treadmill is prerequisite! Quote treadmill serial no. for refitting.
Emergency stop-button with magnet holder + 10 m spiral cable	cos100548	and Velcro-Strip for safety reasons. Jack at this treadmill is prerequisite! Quote treadmill serial no. for refitting.
Footboard left extra wide (speed) 170/65	cos16586	for diagnostics and safe jumping on and off during sprint and co-ordination training
Footboard right extra wide (speed) 170/65	cos102288	for diagnostics and safe jumping on and off during sprint and co-ordination training

unweighting systems

unweighting systems	order number	partial body weight support (unweighting / weight relief) systems. airwalk® ... adjustable gravity™ (all options see airwalk ap)
airwalk® ap	cos30028	unweighting device dynamic up to ca. 70 kg, compressor or compressed air supply required (max. 250 kg / 551 lbs body weight), incl. chest belt size M
airwalk® ap t	cos30028-t	individual special design without metal arches, for ceiling mount, e.g. for 3D motion analysis
Compressor for airwalk® ap, 10 bar	cos103275	air compressor for airwalk® ap, 10 bar - incl. noise cancelling hood
Compressor for airwalk® ap, 8 bar	cos103058	air compressor for airwalk® ap, 8 bar
Option emergency stop for airwalk® ap	cos102342-01	additional function of airwalk ap also as fall prevention system (safety arch) with autom. treadmill belt stop
Option AirCushion mode for airwalk® ap	cos102489	additional valve (mode switch) for airwalk ap for "balancing" the subject. Air cylinder works as "air cushion"; in cos102342-01 already included.
Extension sling set 60 cm for h/p/cosmos airwalk®	cos100432-01	i.e. for small subjects (children) in airwalk vest XS for h/p/cosmos airwalk®
Express sling/loop 18 cm	cos102785-01	1x express sling/loop 18 cm. for extension of pulling rope
Special colour airwalk® ap	cos102844	special colour / powder coating airwalk® ap
Vest XXS for h/p/cosmos airwalk® (all models)	cos10095-vest-XXS	vest for h/p/cosmos airwalk®, size XXS (thorax circumference: 62-75 cm), colour code orange
Vest XS for h/p/cosmos airwalk® (all models)	cos10095-vest-XS	vest for h/p/cosmos airwalk®, size XS (thorax circumference: 76-84 cm), colour code white
Vest S for h/p/cosmos airwalk® (all models)	cos10095-vest-S	vest for h/p/cosmos airwalk®, size S (thorax circumference: 85-92 cm), colour code red
Vest M for h/p/cosmos airwalk® (all models)	cos10095-vest-M	vest for h/p/cosmos airwalk®, size M (thorax circumference: 93-105 cm), colour code yellow
Vest L for h/p/cosmos airwalk® (all models)	cos10095-vest-L	vest for h/p/cosmos airwalk®, size L (thorax circumference: 106-114 cm), colour code green
Vest XL for h/p/cosmos airwalk® (all models)	cos10095-vest-XL	vest for h/p/cosmos airwalk®, size XL (thorax circumference: 116-130 cm), colour code blue
Neoprene shorts S for h/p/cosmos airwalk® (all models)	cos10095-neo-S	neoprene shorts for airwalk®, size S (waist: 55-92 cm)
Neoprene shorts M for h/p/cosmos airwalk® (all models)	cos10095-neo-M	neoprene shorts for airwalk®, size M (waist: 93-105 cm)
Neoprene shorts L for h/p/cosmos airwalk® (all models)	cos10095-neo-L	neoprene shorts for airwalk®, size L (waist: 106-114 cm)
Neoprene shorts XL for h/p/cosmos airwalk® (all models)	cos10095-neo-XL	neoprene shorts for airwalk®, size XL (waist: 115 - 123 cm)

robwalk®

robwalk® expander systems	order number	
robwalk® expander front 170&190/65 with safety arch [cos10079-01]	cos30022-02va07	for the front area - for all h/p/cosmos treadmills with running surface 170&190/65 cm with safety arch
robwalk® expander front airwalk® ap	cos30022-02va04	for the front area - for all h/p/cosmos treadmills with optional h/p/cosmos airwalk® ap
robwalk® expander back (rear)	cos30023-03	for the rear area - for all h/p/cosmos treadmills
Leg cuff thigh S, 1 pair	cos101050-S	accessory for robwalk® expander; size S (250-390 mm)
Leg cuff thigh M, 1 pair	cos101050-M	accessory for robwalk® expander; size M (350-510 mm)
Leg cuff thigh L, 1 pair	cos101050-L	accessory for robwalk® expander; size L (490-750 mm)
Leg cuff shank, 1 pair	cos101051-XS	accessory for robwalk® expander; size XS (140-270 mm)
Mounting-bracket-set robwalk® expander front	cos101355va07	Please quote the serial number and model of h/p/cosmos treadmill on the order!
Universal noose robwalk	cos101748	universal noose robwalk

ramps

wheelchair ramps	order number	
Wheelchair ramp for treadmill 170&190/65	cos14664-03	wheelchair ramp (L: 130 cm x W: 101 cm) for models with running surface 170&190/65 cm

motion analysis, biomechanics

zebris® - motion analysis / biomechanics	order number	PC, monitor and mounting not included, must be ordered separately
zebris® FDM pressure measuring platform 2i upgrade for running deck 170/65, without treadmill	cos102292	option pressure distribution platform 132.1 x 55.9 cm, 4.576 sensors, 120 Hz, price only valid for initial fitting-out, incl. software zebris FDM for gait analysis
zebris® FDM pressure measuring platform 3i upgrade for running deck 170/65, without treadmill	cos102293va02	option pressure distribution platform 135.5 x 54.1 cm, 10.240 sensors, 120 Hz, price only valid for initial fitting-out, incl. software zebris FDM for gait analysis
zebris® modular extension with 180 Hz for running deck 170/65	cos101734	extension (must be ordered with the treadmill!) from standard 120 Hz by further 180 Hz to 300 Hz sampling rate in total
zebris® SyncCam HS (HS camera without tripod)	cos100385i	video camera 60 fps Full HD (1920x1080), 90 fps HD (1920x720), 120fps VGA (640x480)
zebris® SyncCam (camera without stand)	cos100385d	video camera 30 Hz, synchronization cable, USB cable and power supply - without light system
zebris® SyncLightCam (camera and LED light without stand)	cos100385a	camera 30 Hz and lighting unit with 10 power LEDs incl. software driver, synchronisation cable, USB cable and power supply unit
zebris® stand for SyncCam or SyncLightCam (mobile)	cos100385b	mobile stand for SyncCam and SyncLightCam with integrated cable fixation
zebris® Stand for SyncCamLight (not mobile)	cos103311	non-mobile tripod for camera and lighting system with integrated cable fixation
zebris® FDM-Stance Module	cos100384	extra software module for stance and balance analysis for instrumented biomechanic treadmill and for platform stand alone
zebris® software-module Running Analysis	cos104494	Software module for the parameterisation of the movement phases, the geometry, the timing, as well as the essential force and pressure parameters of the running movement. A COP analysis is carried out according to trajectory, density and speed.
zebris® visual stimulation upgrade for 170&190/65 (Rehawalk®)	cos101657-01	video projector, mounting and software for gait training through step projection on h/p/cosmos treadmill 170&190/65 cm
zebris® software-module virtual training (without monitor)	cos101062	interactive gait training on a virtual forest path incl. five gait modules in different levels of difficulty for augmented feedback on the instrumented h/p/cosmos treadmill (without monitor, without stand)
zebris® module editor virtual training "forest walk"	cos102521	Upgrade for [cos101062]. Editor to integrate obstacles with different degrees of difficulty on the treadmill for augmented feedback.
zebris® software-module virtual training (without monitor)	cos104587	interactive gait training on a virtual forest path incl. three gait modules in different levels of difficulty for augmented feedback on the instrumented h/p/cosmos treadmill (without monitor, without stand) (for sports)
zebris® virtual running environment	cos104616	Software module for moving along a virtual training track.
zebris® software-Extension LiveGait®	cos104588	Real-time display of various gait parameters during walking on the treadmill. Feedback training by setting reference values
zebris® software-Extension 7-Zones Report	cos104589	Softwareextension for dividing the foot load surface area of the left and right side of the body into 7 zones
zebris® software-Extension Live Mode	cos104590	Real-time display of various gait parameters during running on the treadmill. Feedback training by setting reference values. Only in combination with zebris® software-module [cos14494] Running Analysis Running Analysis possible.
zebris® Optical Marker Tracking	cos104591	Add-On-Module for FDM-T system for kinematic movement analysis of one body side. The set contains 10 passive markers 1 package of adhesive patches (20 x 5 mm, 500 pieces) for proper fixation of the markers, including software extension. For using the Add-On-Module the 01540194 / SYNCLightCam is preconditioned as well as an updated version of software zebris FDM.

Microgate® - LED optical gait analysis / bio feedback	order number	All options see microgate.
Optogait Kit 1m single meter	cos102065	OploGait is an optical measuring system consisting of a transmitting and a receiving measuring bar. Content: 1xTX, 1xRX bar with interface, 2 webcams, 2 tripods, USB cable, power supply, software, bag for 1 meter. PC or laptop required.
Optofix mounting Optogait / Optojump on the treadmill	cos103386	Holder system with magnets for Optojump / Optogait bar to mount it on h/p/cosmos treadmill (not for extra wide footboards). This set consists of 4 fastening profiles. For one bar 2 fastening profiles. Optogait / Optojump bar is NOT included in this item!
Optogait Kit 1m additional meter for extension	cos102066	Content: 1xTX, 1x RX bar 1 meter with 2 connection plugs for extension (without bag)
OploGait 50 cm bar for extension	cos102066_50cm	Content: 1xTX, 1x RX bar 50 cm with 2 connection plugs for extension (without bag)

IT, computer & visualisation	order number	
h/p/cosmos satellite PC med	cos14970-03	DELL PC, 2x 24" LED Monitor, COL Laser printer, potential isolation transformer, h/p/cosmos PC-rack with 4 casters
h/p/cosmos satellite PC med LC	cos14970-03_LC	PC minitower without on-site support, 2 pcs. 24" LED monitor, potential isolation transformer, h/p/cosmos PC-rack with 4 casters
h/p/cosmos satellite Notebook	cos15686-01	DELL notebook, potential isolation transformer, h/p/cosmos PC-rack with 4 casters
DELL Laptop Computer	cos13476-01	technical details and specification on request
Labour costs per hour system specialist & software	cos60098010004	service engineer system specialist and software for installation, maintenance and repairs in the factory h/p/cosmos.
h/p/cosmos PC-rack of steel, without PC, without devices	cos15033-03	ergonomically designed PC-rack in pure white (RAL-colour 9010) of powder coated steel in h/p/cosmos-design
LED monitor TV 50" (with a small monitor stand for table)	cos102397	for example for SpeedLab®, gaitway® display or for the virtual training module of zebris®
Monitor stand mobile for LCD TV 32-60"	cos101624	monitor stand (without monitor!) for additional TV / monitor (max. load: 30 kg), height: 180 cm.
Wall mount for LCD monitor TV 32-65"	cos101627	wall mount (without monitor!) for additional TV / monitor 32-65"
Connection cable RS232 5 m	cos00097010034	RS232, 5 m (Sub-D 9-pin male/female), USB-Adapter optionally available (cos12769-01)
Connection cable RS232 10 m	cos00097010035	RS232, 10 m (Sub-D 9-pin male/female), USB-Adapter optionally available (cos12769-01)
USB to RS232 converter	cos12769-01	converter from USB to serial port RS232 (Sub-D 9-pin male)

lactate measurement, supplies & software	order number	All options see options, accessories.
Software h/p/cosmos para control®	cos10071-v4.2.0-bt	software for controlling running machines; can be used for optional bluetooth heart rate sensor.
Lactate Scout Sport Starter Set	cos14825-sport	Mobile lactate meter Lactate Scout sport, manufacturer: EKX-diagnostic GmbH, e-paper display, 10 sec. measuring time, easy to use.
Test strip box 25 Lactate Scout Sport	cos14854-sport	Can be used for lactate meter h/p/cosmos sirius, Lactate Scout+, Lactate Scout 4 and Lactate Scout Sport.
Lactate test solution 8,9 - 11,1 mmol/l	cos15527-01-10mmol	Test solution can be used to check the function of h/p/cosmos sirius, Lactate Scout+, Lactate Scout 4 and Lactate Scout Sport.
Lactate test solution 4,5 - 5,6 mmol/l	cos15527-01-5mmol	Test solution can be used to check the function of h/p/cosmos sirius, Lactate Scout+, Lactate Scout 4 and Lactate Scout Sport.
Starter set sirius® Lactate Scout Sport	cos100650-sport	starter set consisting of cos14825-sport, cos14854-sport, cos100773, 6x cos100774

lactate measurement, supplies & software		All options see options, accessories.
motion & gait analysis		All options see gaitway, noraxon, zebris.
options		All options see options, accessories.

In case of retrofitting of options and accessories, prices will be higher than indicated in the price list. Please specify device, model and serial number for a detailed quotation. Not all options and accessories are available for all models.

packing pallet & cardboard hood	order number	export packing, stackable packing: 90 EURO surcharge	measurement L / W / H
Packing treadmill 170&190/65 (SA), part assembled	cos101177	packed part assembled on pallet with cardboard hood, incl. safety arch	274 / 122 / 94 cm
Packing airwalk® ap, part assembled	cos102538-02va02	packed part assembled on pallet with cardboard hood	230 / 109 / 90 cm
packing wooden box	order number	export packing	measurements L / W / H
Packing treadmill 170&190/65 (SA), full assembled	cos10006	packed full assembled in a wooden box, incl. safety arch	274 / 122 / 163 cm
Packing treadmill 170&190/65 (SA), part assembled	cos10004	packed part assembled in a wooden box, incl. safety arch	274 / 122 / 103 cm
Packing airwalk® ap, part assembled	cos102538-02va03	packed part assembled in a wooden box	230 / 109 / 90 cm

transport, installation & instruction, labour	order number	
Sea water proof (option) 150/50, 170&190/65	cos10052	additional labour costs for sea water proof packing
Inst. & Instruction treadm. 170&190/65 EU	cos15733-eu	Installation Europe onsite at customer's facility, incl. traveling, hotel, labour costs and training
Inst. & Instruction treadm. 170&190/65 OS	cos15733-os	Installation Overseas onsite at customer's facility, incl. traveling, hotel, labour costs and training
Inst. & Instr. h/p/cosmos airwalk ap EU	cos100925-eu	Installation Europe onsite at customer's facility, incl. traveling, hotel, labour costs and training
Inst. & Instr. h/p/cosmos airwalk ap OS	cos100925-os	Installation Overseas onsite at customer's facility, incl. traveling, hotel, labour costs and training
Labour costs per hour for service engineer	cos60098010001	service engineer for installation, maintenance and repairs
Labour costs per hour system specialist & software	cos60098010003	service engineer system specialist and software for installation, maintenance and repairs at the customer's site.
1-day application workshop	cos101094	includes costs for specialist / referent, not included flight, logistics, hotel, etc. (need to be charged separately)
Trolley for treadmill 150/50 & 170&190/65	cos16692	means of transportation: handle with 2 wheels and lifting-help for a simple moving of the treadmill

space for individual items	order number	

retrofits & maintenances	order number	
Safety arch 65 with harness & chest belt / stop function	cos10079-01retva02	fall protection for all applications (mandatory for high risk applications); running surface 65 cm wide incl. packaging pallet
Safety arch 65 upgrade h=220 cm	cos14425-01ret	upgrade for safety arch for users up to 220 cm; for running surface 65 cm wide
Handrail long for 170/65	cos103876ret	long handrails straight (only 1 pillar) for 170/65 quasar® (not for USA/Canada)
1 time maintenance + safety check	cos60000110030	for treadmill series quasar/med bis pulsar

treadmill pulsar sport / med (running surface 190/65)



specifications standard version:

running surface: 190 x 65 cm
 speed: MCU5: 0 ... 40 km/h, MCU6: 0 ... 25 km/h
 elevation: -25 ... +25% with reserve belt rotation included
 handrail standard: 50% running deck length, plug-in-system, crossbar
 UserTerminal: console front right at handrail
 running belt: special running belt with rubber profile, 5 mm



medical

h/p/cosmos® treadmills	order number	running surface l/w	speed	elevation	power supply *	UserTerminal display	CE
pulsar® It 3p med, with MCU5	cos30004va02	190 / 65 cm	0 ... 40 km/h	-25 ... +25 %	400 Volt AC 3~ / 15 Amp.	no	CE 0123
pulsar® med 3p, with MCU5 (6 displays)	cos30004va04	190 / 65 cm	0 ... 40 km/h	-25 ... +25 %	400 Volt AC 3~ / 15 Amp.	yes	CE 0123
stellar® med 190/65, with UserTerminal 10,1" TouchPro	cos30004-01va06	190 / 65 cm	0 ... 25 km/h	0 %	230 Volt AC 1~ / 15 Amp.	10,1" touch & keyboard	CE 0123
pulsar® med, with UserTerminal 10,1" TouchPro	cos30004-01va02	190 / 65 cm	0 ... 25 km/h	-25 ... +25 %	230 Volt AC 1~ / 15 Amp.	10,1" touch & keyboard	CE 0123

sports

h/p/cosmos® treadmills	order number	running surface l/w	speed	elevation	power supply *	UserTerminal display	CE
pulsar® sport 3p, with MCU5 (6 displays)	cos30004va07	190 / 65 cm	0 ... 40 km/h	-25 ... +25 %	400 Volt AC 3~ / 15 Amp.	yes	CE
stellar® sport 190/65, with UserTerminal 10,1" TouchPro	cos30004-01va05	190 / 65 cm	0 ... 25 km/h	0 %	230 Volt AC 1~ / 15 Amp.	10,1" touch & keyboard	CE
pulsar® sport, with UserTerminal 10,1" TouchPro	cos30004-01va01	190 / 65 cm	0 ... 25 km/h	-25 ... +25 %	230 Volt AC 1~ / 15 Amp.	10,1" touch & keyboard	CE

* We recommend a dedicated line 3-phase power connection (400 Volt AC3-N/PE 50/60 Hz 16 to 32A fuse) and 3-phase device for high speed, fast acceleration, special applications and for heavier subjects due to higher performance. For all single phase powered treadmills the natural performance limitations of single phase voltage supply apply due to the law of physics. For professional performance diagnostics, athletic training and high performance applications we strongly recommend running machines with 3-phase voltage power supply from model size min. pulsar 3p, venus or saturn.

treadmill upgrades

treadmill upgrades	order number	Treadmills for climate chambers available on request (optional at extra charge for climatic conditions from -35°C ... +55°C and 20% ... 95% humidity)
Special speed 0 - 25 km/h 170-190/65-3p	cos12995p3p	for athletes and for obese patients for models with running surface 170-190/65 cm, 3-phase
Special speed 0 - 45 km/h 190/65-3p	cos10159va06	for sprinting and speed training for models with running surface 190/65 cm, 3-phase
Special speed* 0 - 30 km/h 170-190/65	cos103975	for athletes for models with running surface 170-190/65 cm
Increased max. acceleration from max. 3.7 m/s ² to max. 4.3 m/s ²	cos103231	for quasar® 3p, pulsar® 3p, venus®, saturn®. Special parameters for inverter and MCU5, e. g. for football match simulation / sprint.
Deck hard for 190/65 (less cushioning)	cos14554	original rubber elements for shock absorption on the running deck are replaced by steel elements
Running belt with middle marking for motion analysis 190/65	cos14168va02	routed middle marking approx.5 mm / for models with running surface 190/65 cm
Special colour treadmill frame in RAL	cos102465ralxxxx	all special (RAL) colours; free of charge for orders of 5 or more
Special matt design for motion analysis	cos103019	frame colour RAL 9005 deep black (powder coated, non-shiny) to reduce reflections on the treadmill frame
POLAR Sender T34 Set (extended Range)	cos15178	POLAR T34 chest belt transmitter
POLAR Heart Rate Monitor Set OH1 arm belt	cos101787_OH1	optical pulse sensor, 6 LED system Bluetooth transmitter + arm strap, for devices with UserTerminal Touch and locomotion
POLAR® HeartRate Sensor H10 Wearlink® Bluetooth Smart	cos101787-01	wireless transmitter including chest belt size M-XXL, for smartphones, iPhone (from iPhone 4S, iOS 5.1) and bluetooth receiver in computer
chest belt POLAR HR M-XXL Pro for WIND+H10	cos100420c-02	Strap Pro Chest M-XXL BLK (without transmitter)
POLAR Heart RateSensor H10	cos101787-01a	POLAR heart rate sensor H10 without chest strap, with Bluetooth for devices with UserTerminal Touch and locomotion
"Science port" speed output TTL	cos101277	For scientific instruments and applications the raw digital speed signal data of the treadmill speed sensor are accessible here at an additional jack. It allows even access to falling and rising signal flank without any averaging calculation.
UserTerminal TouchPro for MCU5 remote control	cos101000retva01	desktop version with flat base, including external power supply and connection cable (10,1" TouchScreen & keyboard).
UserTerminal TouchPro for MCU5 remote control	cos101000retva02	with flange and clamp 60mm pipe for mounting on treadmill handrail; including external power supply and connection cable (10,1" TouchScreen & keyboard).
MCU6 Software Version: x.x.xxxx (latest version)	cos101000-vx.xxxxx	for treadmill with Touch & TouchPro
Motor brake for treadmill 170/190/65 MCU5	cos100443	Motor brake for MCU5 running machines h/p/cosmos size 170/190/65
NFC / RFID module for UserTerminal TouchPro	cos101000_NFC	reading the NFC / RFID identifier of a suitable transponder
Bluetooth for UserTerminal TouchPro	cos101000_bluetooth	wireless data transmission via bluetooth. Receiving compatible signals such as heart rate transmitters.
h/p/cosmos Perturbation Software for UserTerminal TouchPro	cos101000sw_pert-V1.0	Special software feature for sudden deceleration and acceleration of the treadmill belt speed respectively of the belt.
Bluetooth FTMS Interface for UserTerminal TouchPro	cos101000_FTMS	user terminal Bluetooth FTMS interface for connecting e.g. software Zwift or Kinomap FTMS = FITness Machine Service protocol
SmartPhone holder for UserTerminal Touch & TouchPro	cos102488_iph_vesa	mounting via vesa holder on user terminal
Activation of acceleration levels 5 ... 7	cos101000_acceleration	very high acceleration (up to 2.315 m/s ²), activation via license key
Self-controlled speed, LED software	cos101000_speed_control	belt speed is automatically adjusted according to position of subject (within predefined limits), this article only covers the required software, the additional hardware (optojump / optogait) has to be ordered separately at extra charge. Optogait 1m [cos102067]
Motor brake for treadmill 170/190/65 for UserTerminal TouchPro	cos101000_brake	motor brake for running machines h/p/cosmos size 170/190/65
Metronome	cos101000_metronome	acoustic cueing for individually setting the cadence target

handrail options

handrail options	order number	
Handrail long for 190/65	cos103877	2x long handrails straight for 190/65 pulsar® (not for USA/Canada)
Handrail speed pluggable	cos103651	pluggable handrail speed with special grip for left and right side
Handrails adjustable 190/65	cos102651-01	bar length 1700 mm, locking bar for height raster 25 mm for models with running surface 190/65 cm
Extension rods for adjustable handrail 190/65	cos102900	the extension rods D= 25 mm offer another 550 mm length to the back
Handrail short	cos103867	very short handrails straight (length: 17 cm, 2 tubes - left and right side, crossbar obligatory)
Handrail crossbar for 170/190/65 (semi-high design)	cos15133-05-rep	crossbar 65 with fixation clamps for handrail d: 30 mm (semi-high design: 20 cm higher than handrails)
Handrails detachable for 190/65 3D motion analysis	cos100742_190-65i3pva01	Cables are installed outside for a simple dismantling. Fall-stop prevention necessary! External UserTerminal necessary (cos14569-02)

safety systems

safety systems	order number	
Safety arch 65 with harness & chest belt / stop function	cos10079-01va02	fall protection for all applications (mandatory for high risk applications); running surface 65 cm wide
Safety arch 65 upgrade h=220 cm	cos14425-01	upgrade for safety arch for users up to 220 cm; for running surface 65 cm wide
Chest belt XXS for safety arch	cos14903-04-XXS	chest belt for safety arch, size XXS (chest measurement: 45-65 cm), colour code orange
Chest belt XS for safety arch	cos14903-04-XS	chest belt for safety arch, size XS (chest measurement: 55-75 cm), colour code black
Chest belt S for safety arch	cos14903-04-S	chest belt for safety arch, size S (chest measurement: 65-95 cm), colour code red
Chest belt M for safety arch	cos14903-04-M	chest belt for safety arch, size M (chest measurement: 85-115 cm), colour code blue
Chest belt L for safety arch	cos14903-04-L	chest belt for safety arch, size L (chest measurement: 105-135 cm), colour code yellow
Chest belt XL for safety arch	cos14903-04-XL	chest belt for safety arch, size XL (chest measurement: 125-155 cm), colour code green
Rope 4.3m (replacement) for [cos10079-01] & [cos10170-01 - cos10173-01]	cos10670-02	rope (replacement) for safety arch; to be replaced every 24 months or at the first sign of wear
Fall prevention system for ceiling mount with emergency stop	cos15866-01	safety device for ceiling mount including fall prevention with emergency stop function for treadmill's running belt
Fall prevention system for ceiling mount without emergency stop	cos15866-01ws	safety device for ceiling mount including fall prevention without emergency stop function for treadmill's running belt
Rope 10m (replacement) for [cos15866-01] & [cos15866-01ws]	cos101729-01	rope (replacement) for fall prevention system for ceiling mount ; to be replaced every 24 months or at the first sign of wear
Magnet with ripcord incl. plastic clip (spare part)	cos101699-03	safety stop lanyard pull-cord with magnet (only spare part "magnet, cord and clip", not the integrated contact switch)
Emergency stop-button with magnet holder + 5 m spiral cable	cos101418-02	and Velcro-Strip for safety reasons. Jack at this treadmill is prerequisite! Quote treadmill serial no. for refitting.
Emergency stop-button with magnet holder + 10 m spiral cable	cos100548	and Velcro-Strip for safety reasons. Jack at this treadmill is prerequisite! Quote treadmill serial no. for refitting.
Footboard left extra wide (speed) 190/65	cos14764	for diagnostics and safe jumping on and off during sprint and co-ordination training
Footboard right extra wide (speed) 190/65	cos102187	for diagnostics and safe jumping on and off during sprint and co-ordination training

unweighting systems

unweighting systems	order number	partial body weight support (unweighting / weight relief) systems. airwalk® ... adjustable gravityTM (all options see airwalk ap)
airwalk® ap	cos30028	unweighting device dynamic up to ca. 70 kg, compressor or compressed air supply required (max. 250 kg / 551 lbs body weight), incl. chest belt size M
airwalk® ap lt	cos30028-lt	individual special design without metal arches, for ceiling mount, e.g. for 3D motion analysis
Compressor for airwalk® ap, 10 bar	cos103275	air compressor for airwalk® ap, 10 bar - incl. noise cancelling hood
Compressor for airwalk® ap, 8 bar	cos103058	air compressor for airwalk® ap, 8 bar
Option emergency stop for airwalk® ap	cos102342-01	additional function of airwalk ap also as fall prevention system (safety arch) with autom. treadmill belt stop
Option AirCushion mode for airwalk® ap	cos102489	additional valve (mode switch) for airwalk ap for "balancing" the subject. Air cylinder works as "air cushion"; in cos102342-01 already included.
Extension sling set 60 cm for h/p/cosmos airwalk®	cos100432-01	i.e. for small subjects (children) in airwalk vest XS for h/p/cosmos airwalk®
Express sling/loop 18 cm	cos102785-01	1x express sling/loop 18 cm for extension of pulling rope
Special colour airwalk® ap	cos102844	special colour / powder coating airwalk® ap
Vest XXS for h/p/cosmos airwalk® (all models)	cos10095-vest-XXS	vest for h/p/cosmos airwalk®, size XXS (thorax circumference: 62-75 cm), colour code orange
Vest XS for h/p/cosmos airwalk® (all models)	cos10095-vest-XS	vest for h/p/cosmos airwalk®, size XS (thorax circumference: 76-84 cm), colour code white
Vest S for h/p/cosmos airwalk® (all models)	cos10095-vest-S	vest for h/p/cosmos airwalk®, size S (thorax circumference: 85-92 cm), colour code red
Vest M for h/p/cosmos airwalk® (all models)	cos10095-vest-M	vest for h/p/cosmos airwalk®, size M (thorax circumference: 93-105 cm), colour code yellow
Vest L for h/p/cosmos airwalk® (all models)	cos10095-vest-L	vest for h/p/cosmos airwalk®, size L (thorax circumference: 106-114 cm), colour code green
Vest XL for h/p/cosmos airwalk® (all models)	cos10095-vest-XL	vest for h/p/cosmos airwalk®, size XL (thorax circumference: 116-130 cm), colour code blue
Neoprene shorts S for h/p/cosmos airwalk® (all models)	cos10095-neo-S	neoprene shorts for airwalk®, size S (waist: 55-92 cm)
Neoprene shorts M for h/p/cosmos airwalk® (all models)	cos10095-neo-M	neoprene shorts for airwalk®, size M (waist: 93-105 cm)
Neoprene shorts L for h/p/cosmos airwalk® (all models)	cos10095-neo-L	neoprene shorts for airwalk®, size L (waist: 106-114 cm)
Neoprene shorts XL for h/p/cosmos airwalk® (all models)	cos10095-neo-XL	neoprene shorts for airwalk®, size XL (waist: 115 - 123 cm)

robowalk systems

robowalk® expander systems	order number	
robowalk® expander front 170&190/65 with safety arch [cos10079-01]	cos30022-02va07	for the front area - for all h/p/cosmos treadmills with running surface 170&190/65 cm with safety arch
robowalk® expander front airwalk® ap	cos30022-02va04	for the front area - for all h/p/cosmos treadmills with optional h/p/cosmos airwalk® ap
robowalk® expander back (rear)	cos30023-03	for the rear area - for all h/p/cosmos treadmills
Leg cuff thigh S, 1 pair	cos101050-S	accessory for robowalk® expander; size S (250-390 mm)
Leg cuff thigh M, 1 pair	cos101050-M	accessory for robowalk® expander; size M (350-510 mm)
Leg cuff thigh L, 1 pair	cos101050-L	accessory for robowalk® expander; size L (490-750 mm)
Leg cuff shank, 1 pair	cos101051-XS	accessory for robowalk® expander; size XS (140-270 mm)
Mounting-bracket-set robowalk® expander front	cos101355va07	Please quote the serial number and model of h/p/cosmos treadmill on the order!
robowalk® manual pulling unit with 125 cm expander rope	cos101745	1 pair of expander manual pulling units 125 cm (incl. 1 noose and 1 thigh cuff)
Universal noose robowalk	cos101748	universal noose robowalk

motion analysis, biomechanics

zebris® - motion analysis / biomechanics	order number	PC, monitor and mounting not included, must be ordered separately
zebris® FDM pressure measuring platform 2i upgrade for running deck 190/65, without treadmill	cos102294	option pressure distribution platform 162.6 x 55.9 cm, 5.632 sensors, 100 Hz, price only valid for initial fitting-out, incl. software zebris FDM for gait analysis
zebris® FDM pressure measuring platform 3i upgrade for running deck 190/65, without treadmill	cos101629	option pressure distribution platform 162.6 x 54.2 cm, 12.288 sensors, 100 Hz, price only valid for initial fitting-out, incl. software zebris FDM for gait analysis
zebris® modular extension with 100 Hz for running deck 190/65	cos103308	extension (must be ordered with the treadmill!) from standard 100 Hz by each further 100 Hz to max. 300 Hz sampling rate in total
zebris® SyncCam HS (HS camera without tripod)	cos100385i	video camera 60 fps Full HD (1920x1080), 90 fps HD (1920x720), 120fps VGA (640x480)
zebris® SyncCam (camera without stand)	cos100385d	video camera 30 Hz, synchronization cable, USB cable and power supply - without light system
zebris® SyncLightCam (camera and LED light without stand)	cos100385a	camera 30 Hz and lighting unit with 10 power LEDs incl. software driver, synchronisation cable, USB cable and power supply unit
zebris® stand for SyncCam or SyncLightCam (mobile)	cos100385b	mobile stand for SyncCam and SyncLightCam with integrated cable fixation
zebris® Stand for SyncCamLight (not mobile)	cos103311	non-mobile tripod for camera and lighting system with integrated cable fixation
zebris® FDM-Stance Module	cos100384	extra software module for stance and balance analysis for instrumented biomechanical treadmill and for platform stand alone
zebris® software-module Running Analysis	cos104494	Software module for the parameterisation of the movement phases, the geometry, the timing, as well as the essential force and pressure parameters of the running movement. A COP analysis is carried out according to trajectory, density and speed.
zebris® visual stimulation upgrade for 170&190/65 (Rehawalk®)	cos101657-01	video projector, mounting and software for gait training through step projection on h/p/cosmos treadmill 170&190/65 cm
zebris® software-module virtual training (without monitor)	cos101062	interactive gait training on a virtual forest path incl. five gait modules in different levels of difficulty for augmented feedback on the instrumented h/p/cosmos treadmill (without monitor, without stand)
zebris® module editor virtual training "forest walk"	cos102521	Upgrade for [cos101062], Editor to integrate obstacles with different degrees of difficulty on the treadmill for augmented feedback.
zebris® software-module virtual environment (without monitor)	cos104587	interactive gait training on a virtual forest path incl. three gait modules in different levels of difficulty for augmented feedback on the instrumented h/p/cosmos treadmill (without monitor, without stand) (for sports)
zebris® virtual running environment	cos104616	Software module for moving along a virtual training track.
zebris® software-Extension LiveGait®	cos104588	Real-time display of various gait parameters during walking on the treadmill. Feedback training by setting reference values
zebris® software-Extension 7-Zones Report	cos104589	Softwareextension for dividing the foot load surface area of the left and right side of the body into 7 zones
zebris® software-Extension Live Mode	cos104590	Real-time display of various gait parameters during running on the treadmill. Feedback training by setting reference values. Only in combination with zebris® software-module [cos14494] Running Analysis Running Analysis possible.
zebris® Optical Marker Tracking	cos104591	Add-On-Module for FDM-T system for kinematic movement analysis of one body side. The set contains 10 passive markers 1 package of adhesive patches (20 x 5 mm, 500 pieces) for proper fixation of the markers, including software extension. For using the Add-On-Module the 01540194 / SYNCLightCam is preconditioned as well as an updated version of software zebris FDM.
Microgate® - LED optical gait analysis / bio feedback	order number	All options see microgate.
Optogait Kit 1m single meter	cos102065	OptoGait is an optical measuring system consisting of a transmitting and a receiving measuring bar. Content: 1xTX, 1xRX bar with interface, 2 webcams, 2 tripods, USB cable, power supply, software, bag for 1 meter. PC or laptop required.
Optofix mounting Optogait / Optojump on the treadmill	cos103386	Holder system with magnets for Optojump / Optogait bar to mount it on h/p/cosmos treadmill (not for extra wide footboards). This set consists of 4 fastening profiles. For one bar 2 fastening profiles. Optogait / Optojump bar is NOT included in this item!
Optogait Kit 1m additional meter for extension	cos102066	Content: 1xTX, 1x RX bar 1 meter with 2 connection plugs for extension (without bag)
OptoGait 50 cm bar for extension	cos102066_50cm	Content: 1xTX, 1x RX bar 50 cm with 2 connection plugs for extension (without bag)

IT, computer & visualisation

IT, computer & visualisation	order number	
h/p/cosmos satellite PC med	cos14970-03	DELL PC, 2x 24" LED Monitor, COOL Laser printer, potential isolation transformer, h/p/cosmos PC-rack with 4 casters
h/p/cosmos satellite PC med LC	cos14970-03_LC	PC minitower without on-site support, 2 pcs. 24" LED monitor, potential isolation transformer, h/p/cosmos PC-rack with 4 casters
h/p/cosmos satellite Notebook	cos15686-01	DELL notebook, potential isolation transformer, h/p/cosmos PC-rack with 4 casters
DELL Laptop Computer	cos13476-01	technical details and specification on request
Labour costs per hour system specialist & software	cos60098010004	service engineer system specialist and software for installation, maintenance and repairs in the factory h/p/cosmos.
h/p/cosmos PC-rack of steel, without PC, without devices	cos15033-03	ergonomically designed PC-rack in pure white (RAL-colour 9010) of powder coated steel in h/p/cosmos-design
LED monitor TV 50" (with a small monitor stand for table)	cos102397	for example for SpeedLab®, gateway® display or for the virtual training module of zebris®
Monitor stand mobile for LCD TV 32-60"	cos101624	monitor stand (without monitor!) for additional TV / monitor (max. load: 30 kg), height: 180 cm.
Wall mount for LCD monitor TV 32-65"	cos101627	wall mount (without monitor!) for additional TV / monitor 32-65"
Connection cable RS232 5 m	cos00097010034	RS232, 5 m (Sub-D 9-pin male/female), USB-Adapter optionally available (cos12769-01)
Connection cable RS232 10 m	cos00097010035	RS232, 10 m (Sub-D 9-pin male/female), USB-Adapter optionally available (cos12769-01)
USB to RS232 converter	cos12769-01	converter from USB to serial port RS232 (Sub-D 9-pin male)

diagnostics

lactate measurement, supplies & software	order number	All options see options, accessories.
Software h/p/cosmos para control®	cos10071-v4.2.0-bt	software for controlling running machines; can be used for optional bluetooth heart rate sensor.
Lactate Scout Sport Starter Set	cos14825-sport	Mobile lactate meter Lactate Scout sport, manufacturer: EKf-diagnostic GmbH, e-paper display, 10 sec. measuring time, easy to use.
Test strip box 25 Lactate Scout Sport	cos14854-sport	Can be used for lactate meter h/p/cosmos sirius, Lactate Scout+, Lactate Scout 4 and Lactate Scout Sport.
Lactate test solution 8,9 - 11,1 mmol/l	cos15527-01-10mmol	Test solution can be used to check the function of h/p/cosmos sirius, Lactate Scout+, Lactate Scout 4 and Lactate Scout Sport.
Lactate test solution 4,5 - 5,6 mmol/l	cos15527-01-5mmol	Test solution can be used to check the function of h/p/cosmos sirius, Lactate Scout+, Lactate Scout 4 and Lactate Scout Sport.
Starter set sirius® Lactate Scout Sport	cos100650-sport	starter set consisting of cos14825-sport, cos14854-sport, cos100773, 6x cos100774

others

lactate measurement, supplies & software	All options see options, accessories.
motion & gait analysis	All options see gaitway, noraxon, zebris.
options	All options see options, accessories.

In case of retrofitting of options and accessories, prices will be higher than indicated in the price list. Please specify device, model and serial number for a detailed quotation. Not all options and accessories are available for all models.

packing, transport, installation

packing pallet & cardboard hood	order number	export packing, stackable packing: 90 EURO surcharge	measurements L / W / H
Packing treadmill 170&190/65 (SA), part assembled	cos10177	packed part assembled on pallet with cardboard hood, incl. safety arch	274 / 122 / 94 cm
Packing airwalk® ap, part assembled	cos102538-02va02	packed part assembled on pallet with cardboard hood	230 / 109 / 90 cm
packing wooden box	order number	export packing	measurement L / W / H
Packing treadmill 170&190/65 (SA), full assembled	cos10006	packed full assembled in a wooden box, incl. safety arch	274 / 122 / 163 cm
Packing treadmill 170&190/65 (SA), part assembled	cos10004	packed part assembled in a wooden box, incl. safety arch	274 / 122 / 103 cm
Packing airwalk® ap, part assembled	cos102538-02va03	packed part assembled in a wooden box	230 / 109 / 90 cm

transport, installation & instruction, labour	order number	
Sea water proof (option) 150/50, 170&190/65	cos10052	additional labour costs for sea water proof packing
Inst. & Instruction treadm. 170&190/65 EU	cos15733-eu	Installation Europe onsite at customer's facility, incl. traveling, hotel, labour costs and training
Inst. & Instruction treadm. 170&190/65 OS	cos15733-os	Installation Overseas onsite at customer's facility, incl. traveling, hotel, labour costs and training
Inst. & Instr. h/p/cosmos airwalk ap EU	cos100925-eu	Installation Europe onsite at customer's facility, incl. traveling, hotel, labour costs and training
Inst. & Instr. h/p/cosmos airwalk ap OS	cos100925-os	Installation Overseas onsite at customer's facility, incl. traveling, hotel, labour costs and training
Labour costs per hour for service engineer	cos60098010001	service engineer for installation, maintenance and repairs
Labour costs per hour system specialist & software	cos60098010003	service engineer system specialist and software for installation, maintenance and repairs at the customer's site.
1-day application workshop	cos101094	includes costs for specialist / referent, not included flight, logistics, hotel, etc. (need to be charged separately)
Trolley for treadmill 150/50 & 170&190/65	cos16692	means of transportation: handle with 2 wheels and lifting-help for a simple moving of the treadmill

space for individual items	order number	

service

retrofits & maintenances	order number	
Safety arch 65 with harness & chest belt / stop function	cos10079-01retva02	fall protection for all applications (mandatory for high risk applications); running surface 65 cm wide incl. packaging pallet
Safety arch 65 upgrade h=220 cm	cos14425-01ret	upgrade for safety arch for users up to 220 cm; for running surface 65 cm wide
Handrail long for 190/65	cos103877ret	long handrails straight (only 1 pillar) for 170/65 quasar® (not for USA/Canada)
1 time maintenance + safety check	cos60000110030	for treadmill series quasar/med bis pulsar

oversize treadmills (running surface 200-450/75-300)

specifications standard version:

running surface:	venus: 200 x 75 cm, 200 x 100 cm
running surface:	saturn: 250 x 100 cm, 250 x 125, 300 x 100 cm, 300 x 125 cm, 450 x 300 cm
speed:	0 ... 40 km/h
elevation:	venus: -35 ... +35%, saturn: -27 ... +27%, saturn 450/300: -4 ... +25%
roll applications:	with reverse belt rotation included such as cycling, wheelchair, roller ski, etc.: with final designation "r" (further sizes and running belts see overview)



h/p/cosmos®

h/p/cosmos® treadmills	order number	running surface l/w	speed	elevation	power supply *	UserTerminal display	CE
venus® 200/75	cos30005-01va05	200 / 75 cm	0 ... 40 km/h	-35 ... +35 %	400 Volt AC 3- / 32 Amp.	15" touch	CE 0123
venus® 200/75 r	cos30005-01va06	200 / 75 cm	0 ... 40 km/h	-35 ... +35 %	400 Volt AC 3- / 32 Amp.	15" touch	CE 0123
venus® 200/100	cos30006-01va05	200 / 100 cm	0 ... 40 km/h	-35 ... +35 %	400 Volt AC 3- / 32 Amp.	15" touch	CE 0123
venus® 200/100 r	cos30006-01va06	200 / 100 cm	0 ... 40 km/h	-35 ... +35 %	400 Volt AC 3- / 32 Amp.	15" touch	CE 0123
saturn® 250/100	cos30008-01va05	250 / 100 cm	0 ... 40 km/h	-27 ... +27 %	400 Volt AC 3- / 32 Amp.	15" touch	CE 0123
saturn® 250/100 r	cos30008-01va06	250 / 100 cm	0 ... 40 km/h	-27 ... +27 %	400 Volt AC 3- / 32 Amp.	15" touch	CE 0123
saturn® 250/125 rs	cos30009-01va03	250 / 125 cm	0 ... 40 km/h	-27 ... +27 %	400 Volt AC 3- / 32 Amp.	15" touch	CE 0123
saturn® 300/100	cos30011-01va05	300 / 100 cm	0 ... 40 km/h	-27 ... +27 %	400 Volt AC 3- / 32 Amp.	15" touch	CE 0123
saturn® 300/100 r	cos30011-01va06	300 / 100 cm	0 ... 40 km/h	-27 ... +27 %	400 Volt AC 3- / 32 Amp.	15" touch	CE 0123
saturn® 300/125 rs	cos30012-01va03	300 / 125 cm	0 ... 40 km/h	-27 ... +27 %	400 Volt AC 3- / 32 Amp.	15" touch	CE 0123

h/p/cosmos® treadmills	order number	running surface l/w	speed	elevation	power supply *	UserTerminal display	CE
saturn® 450/300 rs sport, with UserTerminal 10.1" TouchPro	cos30013-02va01	450 / 300 cm	0 ... 40 km/h	-4 ... +25 %	400 Volt AC 3- / 64 Amp.	10.1" touch & keyboard	CE

Other large treadmills and special treadmills with other dimensions and specifications on request.

Treadmill for climate chamber: available on request (optional in different dimensions and at extra charge for ranges from -35°C ... +55°C and 20% ... 100% humidity), with external UserTerminal.

treadmill upgrades	order number	
Special colour treadmill frame in RAL	cos102465ralxxxx	all special (RAL) colours; free of charge for orders of 5 or more for oversize treadmills
Special matt design for motion analysis	cos103019	frame colour RAL 9005 deep black (powder coated, non-shiny) to reduce reflections on the treadmill frame
Science port speed output TTL	cos101277	For scientific instruments and applications the raw digital speed signal data of the treadmill speed sensor are accessible here at an additional jack. It allows even access to falling and rising signal flank without any averaging calculation.
Additional keyboard with magnet holder MCU5	cos100815-02	mobile remote control with 6 keys with a approx. 2 m coiled cord - with magnet holder for all MCU5-devices
Additional keyboard with magnet holder UserTerminal 10.1" Touch	cos104551	mobile remote control with 6 keys with a approx. 2 m coiled cord - with magnet holder for all handrails
Extension cable for additional keyboard	cos100816-01	Spiral cable extendable to 1,6 meters
Folding shelf for external control desk, UserTerminal venus/saturn	cos100781	for models with running surface 200+75+ cm, manufactured after January 2011
UserTerminal TouchPro for MCU5 remote control	cos101000retva01	desktop version with flat base; including external power supply and connection cable (10.1" TouchScreen & keyboard).
UserTerminal TouchPro for MCU5 remote control	cos101000retva02	with flange and clamp 60mm pipe for mounting on treadmill handrail; including external power supply and connection cable (10.1" TouchScreen & keyboard).
MCU5 Software Version: x.x.xxxx (latest version)	cos101000-xx.xxxxx	for treadmill with Touch & TouchPro
POLAR Sender T34 Set (extended Range)	cos15178	POLAR T34 chest belt transmitter
POLAR Heart Rate Monitor Set OH1 arm belt	cos101787_OH1	optical pulse sensor, 6 LED system Bluetooth transmitter + arm strap, for devices with UserTerminal Touch and locomotion
POLAR® HeartRate Sensor H10 Wearlink® Bluetooth Smart	cos101787-01	wireless transmitter including chest belt size M-XXL, for smartphones, iPhone (from iPhone 4s, iOS 5.1) and bluetooth receiver in computer
chest belt POLAR HR M-XXL Pro for WIND+H10	cos100420c-02	Strap Pro Chest M-XXL BLK (without transmitter)
POLAR Heart RateSensor H10	cos101787-01a	POLAR heart rate sensor H10 without chest strap, with Bluetooth for devices with UserTerminal Touch and locomotion
special speed*	order number	
Special speed 0 - 50 km/h 200+75+	cos10028	for cyclists for models with running surface 200/75 cm...300/125 cm
Special speed 0 - 60 km/h 200+75+	cos00096110029va02	for cyclists for models with running surface 200/75 cm...300/125 cm
Special speed 0 - 80 km/h 200+75+	cos00096110030va02	for cyclists for models with running surface 200/75 cm...300/125 cm
Increased max. acceleration from max. 3.7 m/s ² to max. 4.3 m/s ²	cos103231	for quasar® 3p, pulsar® 3p, venus®, saturn®. Special parameters for inverter and MCU5, e. g. for football match simulation / sprint.
special running belt	order number	
Running belt saturn 200/75 rs ski sticks / spikes	cos13587va02	Special re-inforced running belt for use with metal tipped ski sticks and/or spiked shoes; also applicable for running/cycling/wheelchair
Running belt saturn 200/100 rs ski sticks / spikes	cos13586va02	Special re-inforced running belt for use with metal tipped ski sticks and/or spiked shoes; also applicable for running/cycling/wheelchair
Running belt saturn 250/100 rs ski sticks / spikes	cos13584va02	Special re-inforced running belt for use with metal tipped ski sticks and/or spiked shoes; also applicable for running/cycling/wheelchair
Running belt saturn 300/100 rs ski sticks / spikes	cos00097010041	Special re-inforced running belt for use with metal tipped ski sticks and/or spiked shoes; also applicable for running/cycling/wheelchair

handrail options	order number	
Handrail pluggable long 200/xx	cos14190-01	long handrail, incl. rear pillar; mandatory for wheelchair stabilizer
Handrail pluggable long 250/xx	cos14191-01	long handrail, incl. rear pillar; mandatory for wheelchair stabilizer
Handrail pluggable long 300/xx	cos14192-01	long handrail, incl. rear pillar; mandatory for wheelchair stabilizer
Handrail crossbar for xxx/75cm	cos100947-02	handrail cross-bar for treadmill with running deck width 75 cm (venus / saturn)
Handrail crossbar for xxx/100cm	cos100948-02	handrail cross-bar for treadmill with running deck width 100 cm (venus / saturn)
Handrail crossbar for xxx/125cm	cos100949-02	handrail cross-bar for treadmill with running deck width 125 cm (saturn)

safety systems	order number	
Safety arch 75 with harness & chest belt / stop function	cos10171-01	fall protection for all applications (mandatory for high risk applications); running surface 75 cm wide
Safety arch 100 with harness & chest belt / stop function	cos10172-01	fall protection for all applications (mandatory for high risk applications); running surface 100 cm wide
Safety arch 125 with harness & chest belt / stop function	cos10173-01	fall protection for all applications (mandatory for high risk applications); running surface 125 cm wide
Safety arch 75, 100, 125 upgrade h=220 cm	cos14430-01	upgrade for safety arch for users up to 220 cm; for running surface 75, 100, 125 cm wide
Chest belt XXS for safety arch	cos14903-04-XXS	chest belt for safety arch, size XXS (chest measurement: 45-65 cm), colour code orange
Chest belt XS for safety arch	cos14903-04-XS	chest belt for safety arch, size XS (chest measurement: 55-75 cm), colour code black
Chest belt S for safety arch	cos14903-04-S	chest belt for safety arch, size S (chest measurement: 65-95 cm), colour code red
Chest belt M for safety arch	cos14903-04-M	chest belt for safety arch, size M (chest measurement: 85-115 cm), colour code blue
Chest belt L for safety arch	cos14903-04-L	chest belt for safety arch, size L (chest measurement: 105-135 cm), colour code yellow
Chest belt XL for safety arch	cos14903-04-XL	chest belt for safety arch, size XL (chest measurement: 125-155 cm), colour code green
Rope 4.3m (replacement) for [cos10079-01] & [cos10170-01 - cos10173-01]	cos10670-02	rope (replacement) for safety arch; to be replaced every 24 months or at the first sign of wear
Fall prevention system for ceiling mount with emergency stop	cos15866-01	safety device for ceiling mount including fall prevention with emergency stop function for treadmill's running belt
Fall prevention system for ceiling mount without emergency stop	cos15866-01ws	safety device for ceiling mount including fall prevention without emergency stop function for treadmill's running belt
Rope 10m (replacement) for [cos15866-01] & [cos15866-01ws]	cos101729-01	rope (replacement) for fall prevention system for ceiling mount; to be replaced every 24 months or at the first sign of wear
Magnet with ripcord incl. plastic clip (spare part)	cos101699-03	safety stop lanyard pull-cord with magnet (only spare part "magnet, cord and clip", not the integrated contact switch)
Footboard right extra wide (venus, saturn) for 250/xx, 300/xx	cos102951	extension of standing area (right side) of 200 mm for oversize treadmills width of 250cm and 300cm

wheelchair stabilizer & ramps	order number	
Wheelchair stabilizer / fixation for treadmill 200x75	cos10227-01va01	wheelchair stabilizer for treadmill venus 200x75; long handrails cos14190-01 mandatory
Wheelchair stabilizer / fixation for treadmill 200x100	cos10227-01va02	wheelchair stabilizer for treadmill venus 200x100; long handrails cos14190-01 mandatory
Wheelchair stabilizer / fixation for treadmill 250x100	cos10227-01va04	wheelchair stabilizer for treadmill saturn 250x100; long handrails cos14191-01 mandatory
Wheelchair stabilizer / fixation for treadmill 250x125	cos10227-01va05	wheelchair stabilizer for treadmill saturn 250x125; long handrails cos14191-01 mandatory
Wheelchair stabilizer / fixation for treadmill 300x100	cos10227-01va07	wheelchair stabilizer for treadmill venus 300x100; long handrails cos14192-01 mandatory
Wheelchair stabilizer / fixation for treadmill 300x125	cos10227-01va08	wheelchair stabilizer for treadmill venus 300x125; long handrails cos14192-01 mandatory
Front range limiter for cycling for treadmill W: 75 cm	cos102792-01va01	mechanical mounting (front), range limiter prevents cycling beyond treadmill surface
Front range limiter for cycling for treadmill W: 100 cm	cos102792-01va02	mechanical mounting (front), range limiter prevents cycling beyond treadmill surface
Front range limiter for cycling for treadmill W: 125 cm	cos102792-01va03	mechanical mounting (front), range limiter prevents cycling beyond treadmill surface
Wheelchair ramp for treadmill venus/saturn® xx/75	cos101060-01_75	wheelchair ramp (L: 244.5 cm x W: inner: 67.6 cm / outer: 123.8 cm) for oversize treadmills with belt W: 75 cm
Wheelchair ramp for treadmill venus/saturn® xx/100	cos101060-01_100	wheelchair ramp (L: 244.5 cm x W: inner: 92.6 cm / outer: 123.8 cm) for oversize treadmills with belt W: 100 cm
Wheelchair ramp for treadmill venus/saturn® xx/125	cos101060-01_125	wheelchair ramp (L: 244.5 cm x W: inner: 113.2 cm / outer: 123.8 cm) for oversize treadmills with belt W: 125 cm

Microgate - LED optical gait analysis / bio feedback	order number	All options see microgate.
Optogait Kit 1m single meter	cos102065	OptoGait is an optical measuring system consisting of a transmitting and a receiving measuring bar. Content: 1xTX, 1xRX bar with interface, 2 webcams, 2 tripods, USB cable, power supply, software, bag for 1 meter. PC or laptop required.
Optofix mounting Optogait / Optojump on the treadmill	cos103386	Holder system with magnets for Optojump / Optogait bar to mount it on h/p/cosmos treadmill (not for extra wide footboards). This set consists of 4 fastening profiles. For one bar 2 fastening profiles. Optogait / Optojump bar is NOT included in this item!
Optogait Kit 1m additional meter for extension	cos102066	Content: 1xTX, 1x RX bar 1 meter with 2 connection plugs for extension (without bag)
OptoGait 50 cm bar for extension	cos102066_50cm	Content: 1xTX, 1x RX bar 50 cm with 2 connection plugs for extension (without bag)

IT, computer & visualisation	order number	
h/p/cosmos satellite PC med	cos14970-03	DELL PC, 2x 24" LED Monitor, COOL Laser printer, potential isolation transformer, h/p/cosmos PC-rack with 4 casters
h/p/cosmos satellite PC med LC	cos14970-03_LC	PC minitower without on-site support, 2 pcs. 24" LED monitor, potential isolation transformer, h/p/cosmos PC-rack with 4 casters
h/p/cosmos satellite Notebook	cos15686-01	DELL notebook, potential isolation transformer, h/p/cosmos PC-rack with 4 casters
DELL Laptop Computer	cos13476-01	technical details and specification on request
Labour costs per hour system specialist & software	cos60098010004	service engineer system specialist and software for installation, maintenance and repairs in the factory h/p/cosmos.
Notebookholder (mounted on ext. control desk venus/saturn)	cos13320-01	for models with running surface 200+75+ cm, manufactured after January 2011
h/p/cosmos PC-rack of steel, without PC, without devices	cos15033-03	ergonomically designed PC-rack in pure white (RAL-colour 9010) of powder coated steel in h/p/cosmos-design
LED monitor TV 50" (with a small monitor stand for table)	cos102397	for example for SpeedLab®, gaitway® display or for the virtual training module of zebris®
Monitor stand mobile for LCD TV 32-60"	cos101624	monitor stand (without monitor!) for additional TV / monitor (max. load: 30 kg), height: 180 cm.
Wall mount for LCD monitor TV 32-65"	cos101627	wall mount (without monitor!) for additional TV / monitor 32-65"
Connection cable RS232 5 m	cos00097010034	RS232, 5 m (Sub-D 9-pin male/female), USB-Adapter optionally available (cos12769-01)
Connection cable RS232 10 m	cos00097010035	RS232, 10 m (Sub-D 9-pin male/female), USB-Adapter optionally available (cos12769-01)
Potential equalization cable 5 m (with 2 POAG-plugs)	cos10223-01	potential equalization cable for medical devices
USB to RS232 converter	cos12769-01	converter from USB to serial port RS232 (Sub-D 9-pin male)

lactate measurement & software	order number	All options see options, accessories.
Software h/p/cosmos para control®	cos10071-v4.2.0-bxt	software for controlling running machines; can be used for optional bluetooth heart rate sensor.
Lactate Scout Sport Starter Set	cos14825-sport	Mobile lactate meter Lactate Scout sport, manufacturer: EKF-diagnostic GmbH, e-paper display, 10 sec. measuring time, easy to use.
Test strip box 25 Lactate Scout Sport	cos14854-sport	Can be used for lactate meter h/p/cosmos sirius, Lactate Scout+, Lactate Scout 4 and Lactate Scout Sport.
Lactate test solution 8,9 - 11,1 mmol/l	cos15527-01-10mmol	Test solution can be used to check the function of h/p/cosmos sirius, Lactate Scout+, Lactate Scout 4 and Lactate Scout Sport.
Lactate test solution 4,5 - 5,6 mmol/l	cos15527-01-5mmol	Test solution can be used to check the function of h/p/cosmos sirius, Lactate Scout+, Lactate Scout 4 and Lactate Scout Sport.
Starter set sirius® Lactate Scout Sport	cos100650-sport	starter set consisting of cos14825-sport, cos14854-sport, cos100773, 6x cos100774

lactate measurement, supplies & software		All options see options, accessories.
motion & gait analysis		All options see gaitway, noraxon, zebris.
options		All options see options, accessories.

In case of retrofitting of options and accessories, prices will be higher than indicated in the price list. Please specify device, model and serial number for a detailed quotation. Not all options and accessories are available for all models.

packing wooden box	order number		measurements L / W / H
Packing treadmill 200/75, part assembled	cos14091	packed part assembled in a wooden box	305 / 140 / 135 cm
Packing treadmill 200/100, part assembled	cos14092	packed part assembled in a wooden box	305 / 165 / 135 cm
Packing treadmill 250/75, part assembled	cos14093	packed part assembled in a wooden box	355 / 140 / 135 cm
Packing treadmill 250/100, part assembled	cos14094	packed part assembled in a wooden box	355 / 165 / 135 cm
Packing treadmill 250/125, part assembled	cos14095	packed part assembled in a wooden box	355 / 190 / 135 cm
Packing treadmill 300/75, part assembled	cos14096	packed part assembled in a wooden box	405 / 140 / 135 cm
Packing treadmill 300/100, part assembled	cos14097	packed part assembled in a wooden box	405 / 165 / 135 cm
Packing treadmill 300/125, part assembled	cos12575	packed part assembled in a wooden box	405 / 190 / 135 cm

transport, installation & instruction, labour	order number	
Sea water proof (option) xxx-xxx	cos10053	additional labour costs for sea water proof packing
Inst & Instruction treadmill 200+75+ EU	cos15740-eu	Installation Europe onsite at customer's facility, incl. traveling, hotel, labour costs and training
Inst & Instruction treadmill 200+75+ OS	cos15740-os	Installation Overseas onsite at customer's facility, incl. traveling, hotel, labour costs and training
Labour costs per hour for service engineer	cos60098010001	service engineer for installation, maintenance and repairs
Labour costs per hour system specialist & software	cos60098010003	service engineer system specialist and software for installation, maintenance and repairs at the customer's site.
1-day application workshop	cos101094	includes costs for specialist / referent, not included flight, logistics, hotel, etc. (need to be charged separately)

space for individual items	order number	

retrofits & maintenances	order number	
1 time maintenance + safety check	cos60000110032	for treadmill series venus/saturn bis 300/125

wheelchair options

optical gait analysis / bio feedback

IT, computer & visualisation

diagnostics

others

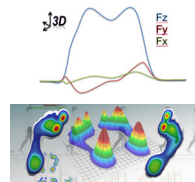
packing, transport, installation

service

treadmill gateway 1d & 3d - running surfaces 150/50, 170/65, 190/65



gateway® 3d - 3 component force measurement (Fz, Fx, Fy) and torque, incl. gateway software



included in standard package:

- fully removable handrail and user terminal
- comprehensive software for analysis and raw export
- various interfaces for ideal lab integrations

Noraxon®, zebris® - optional motion analysis

h/p/cosmos® treadmills	order number	running surface l/w	speed	elevation	power supply *	UserTerminal display	CE
stratos® med	cos31032	150 / 50 cm	0 ... 22 km/h	optional	200 ... 240 Volt AC 1- / 16 Amp.	10,1" touch & keyboard	CE 0123
+ gateway 3d med biomechanic-upgrade + 3 component (Fx,y,z) force measurement, requires additional subframe: [cos102999_subframe] / [cos102999_subframe_elev], with or without elevation	cos102999_150-50_MCU6va02						
stella® med, with UserTerminal 10,1" TouchPro	cos30003-01va06	170 / 65 cm	0 ... 25 km/h	optional	230 Volt AC 1- / 15 Amp.	10,1" touch & keyboard	CE 0123
+ gateway 3d med biomechanic-upgrade + 3 component (Fx,y,z) force measurement, requires additional subframe: [cos102999_subframe] / [cos102999_subframe_elev], with or without elevation	cos102999_170-65_MCU6va02						

h/p/cosmos® treadmills	order number	running surface l/w	speed	elevation	power supply *	UserTerminal display	CE
stratos® sport	cos31031	150 / 50 cm	0 ... 22 km/h	optional	200 ... 240 Volt AC 1- / 16 Amp.	10,1" touch & keyboard	CE
+ gateway 3d sport biomechanic-upgrade + 3 component (Fx,y,z) force measurement, requires additional subframe: [cos102999_subframe] / [cos102999_subframe_elev], with or without elevation	cos102999_150-50_MCU6va01						
stella®, with UserTerminal 10,1" TouchPro	cos30003-01va05	170 / 65 cm	0 ... 25 km/h	optional	230 Volt AC 1- / 15 Amp.	10,1" touch & keyboard	CE
+ gateway 3d sport biomechanic-upgrade + 3 component (Fx,y,z) force measurement, requires additional subframe: [cos102999_subframe] / [cos102999_subframe_elev], with or without elevation	cos102999_170-65_MCU6va01						
pulsar® sport 3p, with MCU5 (6 displays)	cos30004-va07	190 / 65 cm	0 ... 40 km/h	optional	400 Volt AC 3- / 15 Amp.	yes	CE
+ gateway 3d biomechanics upgrade 3 component (Fx,y,z) force measurement requires additional subframe: [cos102999_subframe] / [cos102999_subframe_elev], with or without elevation	cos102999_190-65						

Medical PC & printer not included. Further biomechanic upgrades e.g. with pressure distribution sensor plates, see gateway, noraxon, zebris.

treadmill upgrades	order number	
Reverse belt rotation (downhill) 150/50 with UserTerminal 10,1" Touch	cos101000_reverseva05	for models with running surface 170/65 cm, incl. belt centering rolls, max. reverse speed: 5 km/h, with safety arch: 25 km/h
Reverse belt rotation (downhill) 150/50 with UserTerminal 10,1" Touch	cos101000_reverseva02	for mercury® models with running surface 150/50 cm, incl. belt centering rolls, max. reverse speed: 5 km/h, with safety arch: 25 km/h
Motor brake for treadmill 150/50 G7	cos101000_brake_as	mainly prevents that the running belt can be driven manually when speed is set to "0". Speed sensor and measurement of basic gait parameters (step length, cadence, step count) included.
Running belt with middle marking for motion analysis 150/50	cos14288va02	routed middle marking approx. 5 mm / for models with running surface 150/50 cm; for pluto a special running belt (cos15132_LC) is additional necessary!
Running belt with middle marking for motion analysis 170/65	cos14168va01	routed middle marking approx. 5 mm / for models with running surface 170/65 cm
Running belt with middle marking for motion analysis 190/65	cos14168va02	routed middle marking approx. 5 mm / for models with running surface 190/65 cm
Special matt design for motion analysis	cos103019	frame colour RAL 9005 deep black (powder coated, non-shiny) to reduce reflections on the treadmill frame
"Science port" speed output TTL	cos101277	For scientific instruments and applications the raw digital speed signal data of the treadmill speed sensor are accessible here at an additional jack. It allows even access to falling and rising signal flank without any averaging calculation.
Metronome	cos101000_metronome	acoustic cueing for individually setting the cadence target
Bluetooth FTMS Interface for UserTerminal TouchPro	cos101000_FTMS	user terminal Bluetooth FTMS interface for connecting e.g. software Zwift or Kinomap FTMS = FITNESS MACHINE SERVICE protocol
Bluetooth for UserTerminal TouchPro	cos101000_bluetooth	wireless data transmission via bluetooth. Receiving compatible signals such as heart rate transmitters.
speed, elevation, mobility upgrades	order number	
Elevation 0% to +20% for gateway® 3D 150/50	cos102999_150-50elev	0...20.0 % (0...11.3") motorized adjustment (-20 %...+20 % when using optional reverse belt rotation) for treadmill 150/50
Elevation 0% to +20% for gateway® 3D 170/65	cos102999_XXX-65elevva02	0...20.0 % (0...11.3") motorized adjustment (-20 %...+20 % when using optional reverse belt rotation) for treadmill 170/65
Elevation 0% to +20% for gateway® 3D 190/65	cos102999_XXX-65elevva01	0...20.0 % (0...11.3") motorized adjustment (-20 %...+20 % when using optional reverse belt rotation) for treadmill 190/65
Special speed* 0 - 30 km/h 170-190/65	cos103975	for athletes for models with running surface 170-190/65 cm
Portable baseplate gateway 3d with wheels for gateway 150/50	cos103752va01	Separate baseplate for gateway 3d 150/50 with retractable wheels for moving the gateway in the lab
Portable baseplate gateway 3d with wheels for gateway 170/65	cos103752va02	Separate baseplate for gateway 3d 170/65 with retractable wheels for moving the gateway in the lab
Portable baseplate gateway 3d with wheels for gateway 190/65	cos103752va03	Separate baseplate for gateway 3d 190/65 with retractable wheels for moving the gateway in the lab
Wheels for gateway incline module for gateway 150 - 190	cos103971	retractable wheels for mounting at the gateway incline module to move the gateway in the lab; for gateway 3d 150/50, 170/65, 190/65

handrail options	order number	
Handrail short	cos103867	very short handrails straight (length: 17 cm, 2 tubes - left and right side, crossbar obligatory)

safety systems	order number	
Safety arch 50 with harness & chest belt / stop function	cos10079-01va01	fall protection for all applications (mandatory for high risk applications); running surface 50 cm wide
Safety arch 65 with harness & chest belt / stop function	cos10079-01va02	fall protection for all applications (mandatory for high risk applications); running surface 65 cm wide
Safety arch 65 upgrade h=220 cm	cos14425-01	upgrade for safety arch for users up to 220 cm; for running surface 65 cm wide
Fall prevention system for ceiling mount with emergency stop	cos15866-01	safety device for ceiling mount including fall prevention with emergency stop function for treadmill's running belt
Fall prevention system for ceiling mount without emergency stop	cos15866-01ws	safety device for ceiling mount including fall prevention without emergency stop function for treadmill's running belt
Extension cable 5m safety arch	cos104385	For extending the cable between the safety arch or fall protection using ceiling mounting and UserTerminal.
Chest belt XXS for safety arch	cos14903-04-XXS	chest belt for safety arch, size XXS (chest measurement: 45-65 cm), colour code orange
Chest belt XS for safety arch	cos14903-04-XS	chest belt for safety arch, size XS (chest measurement: 55-75 cm), colour code black
Chest belt S for safety arch	cos14903-04-S	chest belt for safety arch, size S (chest measurement: 65-95 cm), colour code red
Chest belt M for safety arch	cos14903-04-M	chest belt for safety arch, size M (chest measurement: 85-115 cm), colour code blue
Chest belt L for safety arch	cos14903-04-L	chest belt for safety arch, size L (chest measurement: 105-135 cm), colour code yellow
Chest belt XL for safety arch	cos14903-04-XL	chest belt for safety arch, size XL (chest measurement: 125-155 cm), colour code green
Rope 4.3m (replacement) for [cos10079-01] & [cos10170-01 - cos10173-01]	cos10670-02	rope (replacement) for safety arch; to be replaced every 24 months or at the first sign of wear
Rope 10m (replacement) for [cos15866-01] & [cos15866-01ws]	cos101729-01	rope (replacement) for fall prevention system for ceiling mount; to be replaced every 24 months or at the first sign of wear
Magnet with ripcord incl. plastic clip (spare part)	cos101699-03	safety stop lanyard pull-cord with magnet (only spare part *magnet, cord and clip*, not the integrated contact switch)

zebris® - motion analysis / biomechanics	order number	PC, monitor and mounting not included, must be ordered separately
Soft- & hardware set 3D Force and Pressure Treadmill	cos102999ip-set-01	Noraxon Integration package for h/p/cosmos gateway® 3D: Treadmill and Zebris pressure distribution measuring plate have to be ordered separately at extra cost. The software combines several sensors and provides a visual representation of the force superposition. incl. 2x High-speed color video cameras and 1x MYO synchronisation module, 1x Zebris-Noraxon sync cable, 1x BNC-3.5mm audio adapter
zebris® FDM pressure measuring platform 2i upgrade for pluto running deck 150/50, without treadmill	cos103335-01va02	option pressure distribution platform 101.6 x 49.5 cm, 3.120 sensors, 120 Hz, price only valid for initial fitting-out, incl. software zebris FDM for gait analysis
zebris® FDM pressure measuring platform 3i upgrade for mercury running deck 150/50, without treadmill	cos102291-01	option pressure distribution platform 108.4 x 47.4 cm, 7.168 sensors, 120 Hz, price only valid for initial fitting-out, incl. software zebris FDM for gait analysis
zebris® FDM pressure measuring platform 2i upgrade for running deck 170/65, without treadmill	cos102292	option pressure distribution platform 132.1 x 55.9 cm, 4.576 sensors, 120 Hz, price only valid for initial fitting-out, incl. software zebris FDM for gait analysis
zebris® FDM pressure measuring platform 3i upgrade for running deck 170/65, without treadmill	cos102293va02	option pressure distribution platform 135.5 x 54.1 cm, 10.240 sensors, 120 Hz, price only valid for initial fitting-out, incl. software zebris FDM for gait analysis
zebris® FDM pressure measuring platform 2i upgrade for running deck 190/65, without treadmill	cos102294	option pressure distribution platform 162.6 x 55.9 cm, 5.632 sensors, 100 Hz, price only valid for initial fitting-out, incl. software zebris FDM for gait analysis
zebris® FDM pressure measuring platform 3i upgrade for running deck 190/65, without treadmill	cos101629	option pressure distribution platform 162.6 x 54.2 cm, 12.288 sensors, 100 Hz, price only valid for initial fitting-out, incl. software zebris FDM for gait analysis
zebris® modular extension with 120 Hz for running deck 150/50	cos101733	extension (must be ordered with the treadmill) from standard 120 Hz by further 120 Hz to 240 Hz sampling rate in total
zebris® modular extension with 180 Hz for running deck 170/65	cos101734	extension (must be ordered with the treadmill) from standard 120 Hz by further 180 Hz to 300 Hz sampling rate in total
zebris® modular extension with 100 Hz for running deck 190/65	cos103308	extension (must be ordered with the treadmill) from standard 100 Hz by each further 100 Hz to max. 300 Hz sampling rate in total
zebris® FDM force/pressure measuring platform, stand alone FDM-1.5 system 100 Hz	cos103266	platform suitable for the stance, roll-off and gait analysis 149.1 x 54.2 cm, 11.264 sensors, 100 Hz incl. software zebris FDM for gait analysis
zebris® FDM force/pressure measuring platform, stand alone FDM-2 system 100 Hz	cos103267	platform suitable for the stance, roll-off and gait analysis 203.2 x 54.2 cm, 15.360 sensors, 100 Hz incl. software zebris FDM for gait analysis
zebris® FDM force/pressure measuring platform, stand alone FDM-2.4 RW system 100 Hz	cos103267-rw	platform suitable for the stance, roll-off and gait analysis 241.0 x 56.0 cm, 8.360 sensors, 100 Hz incl. software zebris FDM for gait analysis
zebris® FDM force/pressure measuring platform, stand alone FDM-3 system 100 Hz	cos103268	platform suitable for the stance, roll-off and gait analysis 298.1 x 54.2 cm, 22.528 sensors, 100 Hz incl. software zebris FDM for gait analysis
zebris® modular extension with 100 Hz for FDM platform stand alone	cos103300	extension (must be ordered with the platform) from standard 100 Hz by further 100 Hz to max. 300 Hz for platform FDM-1.5 system and max. 200 Hz for platform FDM-2 system
zebris® FDM-Stance Module	cos100384	extra software module for stance and balance analysis for instrumented biomechanic treadmill and for platform stand alone
zebris® balance training module	cos100384a	Software module for playful training of coordination and balance skills.
zebris® software-module Running Analysis	cos104494	Software module for the parameterisation of the movement phases, the geometry, the timing, as well as the essential force and pressure parameters of the running movement. A COP analysis is carried out according to trajectory, density and speed.
zebris® SC-PP Sync-cable	cos103301	sync-cable for parallel use of two FDM platforms cable length 10m
zebris® hardware SDK	cos103860	SDK for connecting zebris® measuring systems in own applications under Windows via MSCOM interface. Advanced programming knowledge required. Including 5 hours consulting / support by zebris.
zebris® SDK consulting / support	cos103861	Consulting services as help for the implementation of the zebris® SDK.
zebris® SDK license extension	cos103863	License for activation of a FDM system in article cos1033860 / zebris® hardware SDK.
zebris® software-module virtual environment (without monitor!)	cos104587	interactive gait training on a virtual forest path incl. three gait modules in different levels of difficulty for augmented feedback on the instrumented h/p/cosmos treadmill (without monitor, without stand) (for sports)
zebris® virtual running environment	cos104616	Software module for moving along a virtual training track.
zebris® software-Extension LiveGait®	cos104588	Real-time display of various gait parameters during walking on the treadmill. Feedback training by setting reference values
zebris® software-Extension 7-Zones Report	cos104589	Softwareextension for dividing the foot load surface area of the left and right side of the body into 7 zones
zebris® software-Extension Live Mode	cos104590	Real-time display of various gait parameters during running on the treadmill. Feedback training by setting reference values. Only in combination with zebris® software-module [cos14494] Running Analysis Running Analysis possible.
zebris® Optical Marker Tracking	cos104591	Add-On-Module for FDM-T system for kinematic movement analysis of one body side. The set contains 10 passive markers 1 package of adhesive patches (20 x 5 mm, 500 pieces) for proper fixation of the markers, including software extension. For using the Add-On-Module the 01540194 / SYNCLightCam is preconditioned as well as an updated version of software zebris FDM.

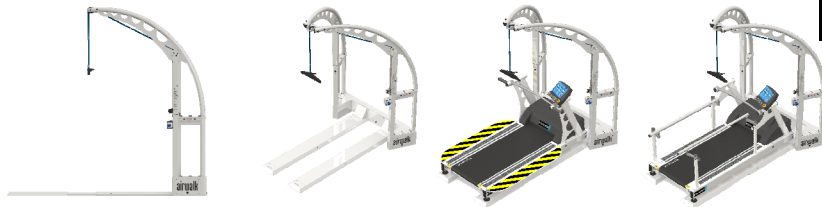
software upgrades, IT, computer & visualisation	order number	
h/p/cosmos satellite PC med	cos14970-03	DELL PC, 2x 24" LED Monitor, COL Laser printer, potential isolation transformer, h/p/cosmos PC-rack with 4 casters
h/p/cosmos satellite PC med LC	cos14970-03_LC	PC minitower without on-site support, 2 pcs. 24" LED monitor, potential isolation transformer, h/p/cosmos PC-rack with 4 casters
Labour costs per hour system specialist & software	cos60098010004	service engineer system specialist and software for installation, maintenance and repairs in the factory h/p/cosmos.
Connection cable RS232 5 m	cos00097010034	RS232, 5 m (Sub-D 9-pin male/female), USB-Adapter optionally available (cos12769-01)
Connection cable RS232 10 m	cos00097010035	RS232, 10 m (Sub-D 9-pin male/female), USB-Adapter optionally available (cos12769-01)
USB to RS232 converter	cos12769-01	converter from USB to serial port RS232 (Sub-D 9-pin male)
Potential equalization cable 5 m (with 2 POAG-plugs)	cos10223-01	potential equalization cable for medical devices
LED monitor TV 50" (with a small monitor stand for table)	cos102397	for example for SpeedLab®, gateway® display or for the virtual training module of zebris®
Monitor stand mobile for LCD TV 32-60"	cos101624	monitor stand (without monitor) for additional TV / monitor (max. load: 30 kg), height: 180 cm.
External GRF-decomposition module	cos102999grf	decomposition of analogue ground reaction forces (left / right)
Digital data streaming interface module	cos102999ds	Interface module for digital data streaming, control from a third-party application with data streaming option. Seamless integration with other biomechanical measuring systems, such as motion analysis system, motion sensors, EMG, pressure distribution sensors, video software, etc.
Vicon Nexus plugin module	cos102999vic	vicon Nexus plugin module to connect to the gateway-3D digital data streaming interface
Perturbation-option for gateway 3D	cos102999pert_MCU6	perturbation via sudden speed changes for gateway 3D

In case of retrofitting of options and accessories, prices will be higher than indicated in the price list. Please specify device, model and serial number for a detailed quotation. Not all options and accessories are available for all models.

packing pallet & cardboard hood	order number	export packing, stackable packing: 90 EURO surcharge	measurements L / W / H
Packing treadmill 150/50, full assembled	cos102522va04	packed full assembled on pallet with cardboard hood	230 / 109 / 169 cm
Packing treadmill 170&190/65 (SA), part assembled	cos101777	packed part assembled on pallet with cardboard hood, incl. safety arch	274 / 122 / 94 cm
packing wooden box	order number	export packing	measurements L / W / H
Packing treadmill 150/50, part assembled	cos102522-01va04	packed part assembled in a wooden box	230 / 110 / 98 cm
Packing treadmill 150/50 (SA), part assembled	cos102522-01va06	packed part assembled in a wooden box, incl. safety arch	274 / 122 / 103 cm
Packing treadmill 150/50 (SA), full assembled	cos102522-01va07	packed part assembled in a wooden box, incl. safety arch	274 / 122 / 163 cm
Packing treadmill 170&190/65 (SA), full assembled	cos10006	packed full assembled in a wooden box, incl. safety arch	274 / 122 / 163 cm
Packing treadmill 170&190/65 (SA), part assembled	cos10004	packed part assembled in a wooden box, incl. safety arch	274 / 122 / 103 cm
transport, installation & instruction, labour	order number		
Sea water proof (option) 150/50, 170&190/65	cos10052	additional labour costs for sea water proof packing	
Installation gateway® 3D EU within EU	cos102999inst-eu	Installation onsite at customer's facility, gateway® 3D will be bolted to the floor. Incl. traveling, hotel, labour costs and 4 hours training	
Installation gateway® 3D OS overseas	cos102999inst-os	Installation onsite at customer's facility, gateway® 3D will be bolted to the floor. Incl. traveling, hotel, labour costs and 4 hours training	
Labour costs per hour for service engineer	cos60098010001	service engineer for installation, maintenance and repairs	
Labour costs per hour system specialist & software	cos60098010003	service engineer system specialist and software for installation, maintenance and repairs at the customer's site.	
1-day application workshop	cos101094	includes costs for specialist / referent, not included flight, logistics, hotel, etc. (need to be charged separately)	
space for individual items	order number		

unweighting systems airwalk® ap

specifications standard version:
body weight support device (unweighting device)
 up to running surface l/w 190 x 65 cm
 up to 80 kg (further options below)
 max. body weight: 250 kg
 max. height: 200 cm (further options below)



unweighting system

unweighting systems	order number	partial body weight support (unweighting / weight relief) systems. airwalk® ... adjustable gravity™
airwalk® ap	cos30028	unweighting device dynamic up to ca. 70 kg, compressor or compressed air supply required (max. 250 kg / 551 lbs body weight), incl. chest belt size M
airwalk® ap lt	cos30028-lt	individual special design without metal arches, for ceiling mount, e.g. for 3D motion analysis
Compressor for airwalk® ap, 10 bar	cos103275	air compressor for airwalk® ap, 10 bar - incl. noise cancelling hood
Compressor for airwalk® ap, 6 bar	cos103058	air compressor for airwalk® ap, 6 bar
Option emergency stop for airwalk® ap	cos102342-01	additional function of airwalk® ap also as fall prevention system (safety arch) with autom. treadmill belt stop
Option AirCushion mode for airwalk® ap	cos102489	additional valve (mode switch) for airwalk® ap for "balancing" the subject. Air cylinder works as "air cushion"; in cos102342-01 already included.
Option special height 250-300 cm for airwalk® ap	cos102491	Special height of the device on customers request in case of low ceiling or patients higher 2m. Caution! Max. ceiling height has to be quoted with the order. Height is not a range but fixed. Longer delivery time applies!
Option unweighting up to 120 kg for airwalk® ap	cos102492	increases the maximum unweighting up to 120 kg; thus less fine tuning and less minimal adjustment ranges.
Unweighting rope 2,59m-D=6mm (replacement) for [cos30028]	cos102317-01	rope (replacement) without hanger for airwalk® ap; to be replaced every 12 months or at the first sign of wear
Extension sling set 60 cm for h/p/cosmos airwalk®	cos100432-01	i.e. for small subjects (children) in airwalk® vest XS for h/p/cosmos airwalk®
Express sling/loop 18 cm	cos102785-01	1x express sling/loop 18 cm for extension of pulling rope
Special colour airwalk® ap	cos102844	special colour / powder coating airwalk® ap
Vest XXS for h/p/cosmos airwalk® (all models)	cos10095-vest-XXS	vest for h/p/cosmos airwalk®, size XXS (thorax circumference: 62-75 cm), colour code orange
Vest XS for h/p/cosmos airwalk® (all models)	cos10095-vest-XS	vest for h/p/cosmos airwalk®, size XS (thorax circumference: 76-84 cm), colour code white
Vest S for h/p/cosmos airwalk® (all models)	cos10095-vest-S	vest for h/p/cosmos airwalk®, size S (thorax circumference: 85-92 cm), colour code red
Vest M for h/p/cosmos airwalk® (all models)	cos10095-vest-M	vest for h/p/cosmos airwalk®, size M (thorax circumference: 93-105 cm), colour code yellow
Vest L for h/p/cosmos airwalk® (all models)	cos10095-vest-L	vest for h/p/cosmos airwalk®, size L (thorax circumference: 106-114 cm), colour code green
Vest XL for h/p/cosmos airwalk® (all models)	cos10095-vest-XL	vest for h/p/cosmos airwalk®, size XL (thorax circumference: 116-130 cm), colour code blue
Neoprene shorts S for h/p/cosmos airwalk® (all models)	cos10095-neo-S	neoprene shorts for airwalk®, size S (waist: 55-92 cm)
Neoprene shorts M for h/p/cosmos airwalk® (all models)	cos10095-neo-M	neoprene shorts for airwalk®, size M (waist: 93-105 cm)
Neoprene shorts L for h/p/cosmos airwalk® (all models)	cos10095-neo-L	neoprene shorts for airwalk®, size L (waist: 106-114 cm)
Neoprene shorts XL for h/p/cosmos airwalk® (all models)	cos10095-neo-XL	neoprene shorts for airwalk®, size XL (waist: 115 - 123 cm)

In case of retrofitting of options and accessories, prices will be higher than indicated in the price list. Please specify device, model and serial number for a detailed quotation. Not all options and accessories are available for all models.

packing, transport, installation

packing pallet & cardboard hood	order number	export packing, stackable packing: 90 EURO surcharge	measurement L / W / H
Packing airwalk® ap, pallet	cos102538-02va01	simply packed with bubble wrap on a special pallet	230 / 109 / 130 cm
Packing airwalk® ap, part assembled	cos102538-02va02	packed part assembled on pallet with cardboard hood	230 / 109 / 90 cm
packing wooden box	order number	export packing	measurements L / W / H
Packing airwalk® ap, part assembled	cos102538-02va03	packed part assembled in a wooden box	230 / 109 / 90 cm

transport, installation & instruction, labour	order number	
Sea water proof (option) 150/50, 170&190/65	cos10052	additional labour costs for sea water proof packing
Inst. & Instr. h/p/cosmos airwalk ap EU	cos100925-eu	Installation Europe onsite at customer's facility, incl. traveling, hotel, labour costs and training
Inst. & Instr. h/p/cosmos airwalk ap OS	cos100925-os	Installation Overseas onsite at customer's facility, incl. traveling, hotel, labour costs and training
Labour costs per hour for service engineer	cos60098010001	service engineer for installation, maintenance and repairs
Labour costs per hour system specialist & software	cos60098010003	service engineer system specialist and software for installation, maintenance and repairs at the customer's site.
1-day application workshop	cos101094	includes costs for specialist / referent, not included flight, logistics, hotel, etc. (need to be charged separately)

space for individual items	order number	

service

retrofits & maintenances	order number	
1 time maintenance + safety check	cos14533	for unweighting systems airwalk

ergometer torqualizer 900 sport / med



specifications standard version:

7-inch capacitive touch display, full color display
 contains all the functions needed for the next generation of professional cardio machines
 Polar® auto connection (5kHz & Bluetooth®), backward compatible
 3 training programs
 mains-independent operation
 max. subject weight 150 kg



h/p/cosmos® treadmills	order number	running surface l/w	speed	elevation	power supply *	UserTerminal display	CE
pluto® ef med (emotion fitness touch-display)	cos31012	150 / 50 cm	0 ... 22 km/h	0 ... 25 %	200 ... 240 Volt AC 1- / 16 Amp.	7" touch	CE 0123

h/p/cosmos® torqualizer® med ergometer series 900	order number	brake system	power** optionally 750 W	rpm 1/min speed range	power supply *	max. user weight	CE
torqualizer® med 1200 with UserTerminal 10,1" TouchPro	cos30021va02	hybrid	6 ... 1200 watts **	20 ... >140 rpm **	100 ... 240 volts AC / 6 Amp.	150 kg	CE 0123
torqualizer® cycle ef med 900	cos30021ef-med900	hybrid	15 ... 500 watts	15 ... 140 rpm	grid independent (cordless)	150 kg	CE 0633
torqualizer® arm ef med 900 stand model incl. crank lever adjustable in length	cos30030ef-med900	hybrid	15 ... 500 watts	15 ... 140 rpm	grid independent (cordless)	150 kg	CE 0633
torqualizer® arm ef med 900 wall model incl. crank lever adjustable in length	cos30030ef-med900-wm	hybrid	15 ... 500 watts	15 ... 140 rpm	grid independent (cordless)	150 kg	CE 0633
torqualizer® recumbent ef med 900	cos30031ef-med900	hybrid	15 ... 500 watts	15 ... 140 rpm	grid independent (cordless)	150 kg	CE 0633
torqualizer® cross ef med 900	cos30032ef-med900	hybrid	(15) 100 ... 500 watts	15 ... 140 rpm	grid independent (cordless)	150 kg	CE 0633
torqualizer® stair ef med 900	cos30033ef-med900	hybrid	sinking rate	4 ... 27 m/min	grid independent (cordless)	150 kg	CE 0633

h/p/cosmos® treadmills	order number	running surface l/w	speed	elevation	power supply *	display	CE
pluto® ef sport (emotion fitness touch-display)	cos31011	150 / 50 cm	0 ... 22 km/h	0 ... 25 %	200 ... 240 Volt AC 1- / 16 Amp.	7" touch	CE

h/p/cosmos® torqualizer® ergometer series 900	order number	brake system	power** optionally 750 W	rpm 1/min speed range	power supply *	max. user weight	CE
torqualizer® 1200 with UserTerminal 10,1" TouchPro	cos30021va01	hybrid	6 ... 1200 watts **	20 ... >140 rpm **	100 ... 240 volts AC / 6 Amp.	150 kg	CE
torqualizer® cycle ef 900	cos30021ef-900	hybrid	25 ... 500 watts	15 ... 140 rpm	grid independent (cordless)	150 kg	CE
torqualizer® arm ef 900 stand model incl. crank lever adjustable in length	cos30030ef-900	hybrid	25 ... 500 watts	15 ... 140 rpm	grid independent (cordless)	150 kg	CE
torqualizer® arm ef 900 wall model incl. crank lever adjustable in length	cos30030ef-900-wm	hybrid	25 ... 500 watts	15 ... 140 rpm	grid independent (cordless)	150 kg	CE
torqualizer® recumbent ef 900	cos30031ef-900	hybrid	25 ... 500 watts	15 ... 140 rpm	grid independent (cordless)	150 kg	CE
torqualizer® cross ef 900	cos30032ef-900	hybrid	(15) 100 ... 500 watts	15 ... 140 rpm	grid independent (cordless)	150 kg	CE
torqualizer® stair ef 900	cos30033ef-900	hybrid	sinking rate	4 ... 27 m/min	grid independent (cordless)	150 kg	CE

* We recommend a dedicated line 3 phase power connection (400 Volt AC3-NIPE 50/60 Hz 16 to 32A fuse) and 3-phase device for high speed, fast acceleration, special applications and for heavier subjects due to higher performance. For all single phase powered treadmills the natural performance limitations of single phase voltage supply apply due to the law of physics. For professional performance diagnostics, athletic training and high performance applications we strongly recommend running machines with 3-phase voltage power supply from model size min. pulsar 3p, venus or saturn.

** measured and calibrated up to 900 watts. Depending on gearings and revolutions per minute. Tolerances may occur on loads above 900 watts.

treadmill upgrades	order number	
Handrails adjustable 150/50 (pluto G7)	cos102010-01va01	bar length 1500 mm, locking bar for height raster 25 mm for pluto® models 150/50 cm, H: 75 ... 120 cm / W: 38 ... 104 cm

options for all h/p/cosmos® torqualizer® 900 models	order number	
Performance package - for series 900	cos30021ef-per	higher maximum power 15-950 watts max (cycle, relax) 15-550 watts max (body) 100-950 watts max (cross) reduces initial load from 7 watts, inductive charging
Connect package - for series 900	cos30021ef-con	any available system integration, use/configuration RFID, NFC, compatible mobile devices, Bluetooth Low Energy and barcode identification
Program package - for series 900	cos30021ef-pro	plus 9 programs, IPN Test, plus 5 additional tests with cycle 900, full range of functions on motion balance system and serious games
All in-package (performance + connect + program) - for series 900	cos30021ef-ppp	includes all packages - performance + connect + program package
Emotion flying data dongle	cos30021ef-900-fdd	all data is transmitted via Bluetooth necessary for Connect Package and All-in-Package
Power supply-med 24V for ergometer 900	cos30021ef-900-epc	Power supply-med 24V for ergometer 900 (cycle, arm, recumbent, cross, stair) Switchmode plug-in power supply, input 100-240 V AC, 50-60 Hz, 24V

options for h/p/cosmos® torqualizer® cycle ef (med) 900	order number	
Upgrade for max. user weight up to 200 kg for ef (med)	cos30021ef-muw	user weight upgrade to 200 kg (option for new device) for bicycle-ergometer
Crank lever adjustable in length / stainless steel for cycle ef (med) and for recumbent ef (med)	cos30021ef-acr	radius adjustable between 75 - 175 mm (option for new device; retrofitting: price on request) for ergometer and recumbent-ergometer
Motion easy move Transportsystem mit Rollenhub	cos30021ef-rol	motion easy move Transportsystem mit Rollenhub für torqualizer ef (med)
Handlebar adjustmen -t for series 900	cos30021ef-ha	Handlebar adjustment for 900 series

options for h/p/cosmos® arm ef (med) 900	order number	
Upgrade for max. user weight up to 200 kg for arm ef (med)	cos30030ef-muw	user weight upgrade to 200 kg (option for new device) for arm-ergometer for stand models
Platform for wheelchairs with gauge 70-100 cm for arm ef (med)	cos30030ef-ramp	platform for wheelchairs with gauge 70-100 cm for arm ef (med) for stand models
Power connection set for cable routing, incl. power supply unit	cos30030ef-epc	Power connection set for cable routing, incl. power supply unit (only original equipment!)

options for h/p/cosmos® arm ef (med) 900 wali models	order number	
Power connection set for cable routing, incl. power supply unit	cos30030ef-epc	Power connection set for cable routing, incl. power supply unit (only original equipment!)

options for h/p/cosmos® recumbent ef (med) 900	order number	
Upgrade for max. user weight up to 200 kg for recumbent ef (med)	cos30031ef-muw	user weight upgrade to 200 kg (option for new device) for recumbent-ergometer
Upgrade for max user weight up to 250 kg for recumbent ef (med)	cos30031ef-muw-250	user weight upgrade to max. 250 kg (option new device) for recumbent ergometers with seat back inclusive swivel seat
Crank lever adjustable in length / stainless steel for cycle ef (med) and for recumbent ef (med)	cos30021ef-acr	radius adjustable between 75 - 175 mm (option for new device; retrofitting: price on request) for ergometer and recumbent-ergometer

options for h/p/cosmos® cross ef (med) 900	order number	
Upgrade for max. user weight up to 200 kg for cross ef (med)	cos30032ef-muw	user weight upgrade to 200 kg (option for new device) for cross-ergometer

In case of retrofitting of options and accessories, prices will be higher than indicated in the price list. Please specify device, model and serial number for a detailed quotation. Not all options and accessories are available for all models.

medical

sports

upgrade

torqualizer options

packing pallet & cardboard hood	order number	export packing, stackable packing (treadmills): 90 EURO surcharge	measurements L / B / H
Packing treadmill 150/50, full assembled	cos102522va04	packed full assembled on pallet with cardboard hood	230 / 109 / 169 cm
Packing treadmill 150/50, part assembled	cos102522va01	packed part assembled on pallet with cardboard hood	230 / 109 / 87 cm
Packing treadmill 150/50, part assembled	cos102522-01va04	packed part assembled in a wooden box	230 / 110 / 98 cm
Packing torqualizer® for bicycle ef (med) 900	cos30021-B-EF-AL-188	packed full assembled on pallet with metal frame and cardboard hood 94 kg	125 / 85 / 170 cm
Packing torqualizer® for arm ef (med) 900 stand model	cos30030-B-EF-AL-188	packed full assembled on pallet with metal frame and cardboard hood 134 kg	125 / 85 / 175 cm
Packing torqualizer® for arm ef (med) 900 wall model	cos30030-B-EF-AL-171	packed full assembled on pallet with metal frame and cardboard hood 101 kg	217 / 79 / 155 cm
Packing torqualizer® for recumbent ef (med) 900	cos30031-B-EF-AL-171	packed full assembled on pallet with metal frame and cardboard hood 133 kg	217 / 79 / 155 cm
Packing torqualizer® for cross ef (med) 900	cos30032-B-EF-AL-171	packed full assembled on pallet with metal frame and cardboard hood 154 kg	217 / 79 / 190 cm
Packing torqualizer® for stair ef (med) 900	cos30033-B-EF-AL-188	packed full assembled on pallet with metal frame and cardboard hood 115 kg	125 / 85 / 180 cm

transport, installation & instruction, labour	order number		
Inst. & Instruction treadmill 150/50 EU	cos15732-eu	Installation in Europe onsite at customer's facility, incl. traveling, hotel, labour costs and training	
Inst. & Instruction treadmill 150/50 OS	cos15732-os	Installation Overseas onsite at customer's facility, incl. traveling, hotel, labour costs and training	
Labour costs per hour for service engineer	cos60098010001	service engineer for installation, maintenance and repairs	
Labour costs per hour system specialist & software	cos60098010003	service engineer system specialist and software for installation, maintenance and repairs at the customer's site.	
Trolley for treadmill 150/50 & 170&190/65	cos16692	means of transportation: handle with 2 wheels and lifting-help for a simple moving of the treadmill	

space for individual items	order number		

special devices

sprint-trainer comet®
ladder-ergometer discovery®
expander-system robomove® accessories



sprint trainer comet®

sports	h/p/cosmos® sprint trainer / rope traction device h/p/cosmos®		traction force- and traction resistance-training	power supply*	UserTerminal display	CE
	comet®	cos30015va01	sprint trainer concentric/eccentric, 180 meter rope, 1-phase	230 Volt AC 1- / 15 Amp.	yes	CE
	comet® 3p	cos30015va02	sprint trainer concentric/eccentric, 180 meter rope, 3-phase	400 Volt AC 3- / 15 Amp.	yes	CE

options	h/p/cosmos® comet® options for all models		order number
	comet pelvic belt size S	cos14665-01	comet pelvic size "Small", l/w 1000mm; 100mm
	comet pelvic belt size M	cos12571-01	comet pelvic size "Medium", l/w 1200mm; 100mm
	comet pelvic belt size L	cos14666-01	comet pelvic size "Large", l/w 1400mm; 100mm
	Rope 180m for sprint trainer comet	cos12518	Spare rope for the h/p/cosmos comet sprint trainer. ca. 180m

transport	packing, transport, installation & instruction		order number	export packing	measurements L / B / H
	Packing sprint trainer comet®	cos15822	packed full assembled in a wooden box		123 / 83 / 114 cm
	Inst. & Instruction comet EU	cos15739-eu	Installation Europe onsite at customer's facility, incl. traveling, hotel, labour costs and training		
	Inst. & Instruction comet OS	cos15738-os	Installation Overseas onsite at customer's facility, incl. traveling, hotel, labour costs and training		

ladder ergometer discovery®

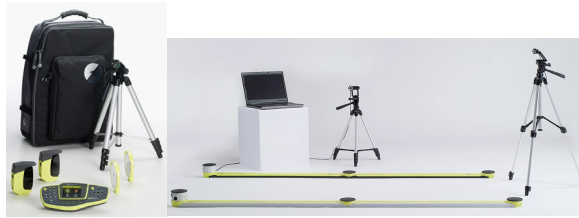
sports	h/p/cosmos® ladder ergometer		height of climb: 235cm, rung width: 49.5cm / interval: 24.4cm	power supply	display	CE
	discovery®	cos30014va02	"endless" ladder ergometer for climbing	230 Volt AC 1- / 15 Amp.	yes	CE

transport	packing, transport, installation & instruction		order number	export packing	measurements L / B / H
	Packing ladder ergometer discovery®	cos10007	packed full assembled in a wooden box		274 / 122 / 163 cm
	Inst. & Instruction discovery EU	cos15739-eu	Installation Europe onsite at customer's facility, incl. traveling, hotel, labour costs and training		
	Inst. & Instruction discovery OS	cos15739-os	Installation Overseas onsite at customer's facility, incl. traveling, hotel, labour costs and training		

expander system robomove®

robomove	expander system robomove®		order number
	Universal noose robowalk	cos101748	universal noose robowalk
	Leg cuff thigh S, 1 pair	cos101050-S	accessory for robowalk® expander; size S (250-390 mm)
	Leg cuff thigh M, 1 pair	cos101050-M	accessory for robowalk® expander; size M (350-510 mm)
	Leg cuff thigh L, 1 pair	cos101050-L	accessory for robowalk® expander; size L (490-750 mm)
	Leg cuff shank, 1 pair	cos101051-XS	accessory for robowalk® expander; size XS (140-270 mm)

space for individual items		order number



gyko

Microgate® - Gyko	order number	
GykoPRO	cos200000-PRO	Inertial measurement device for analysing the movement of any part of the body (GykoPRO in conjunction with OptoJump/OptoGait software).
Gyko RePower Software	cos102635	Gyko RePower Software, to use Gyko kit Sport / Med also as a standalone system without the Optogait / Optojump software.

optogait

Microgate® - Optogait	order number	
Optogait Kit 1m single meter	cos102065	OptoGait is an optical measuring system consisting of a transmitting and a receiving measuring bar. Content: 1xTX, 1xRX bar with interface, 2 webcams, 2 tripods, USB cable, power supply, software, bag for 1 meter. PC or laptop required.
Optogait Kit 1m single meter HS Cam 90 fps	cos102065_HS	OptoGait is an optical measuring system consisting of a transmitting and a receiving measuring bar. Content: 1xTX, 1xRX bar with interface, 2 webcams 90 (fps), 2 tripods, USB cable, power supply, software, bag for 1 meter. PC or laptop required.
Optogait Kit 1m for extension	cos102067	OptoGait is an optical measuring system consisting of a transmitting and a receiving measuring bar. Content: 1xTX, 1xRX bar with interface, 2 webcams, 2 tripods, USB cable, power supply, 3 flat cable, software, trolley for 5 meter. PC or laptop required.
OptoGait 50 cm bar for extension	cos102066_50cm	Content: 1xTX, 1x RX bar 50 cm with 2 connection plugs for extension (without bag)
Optogait Kit 1m additional meter for extension	cos102066	Content: 1xTX, 1x RX bar 1 meter with 2 connection plugs for extension (without bag)
Optogait Kit 5m	cos102068	OptoGait is an optical measuring system consisting of a transmitting and a receiving measuring bar. Content: 1xTX, 1xRX interface bar, 4xTX, 4x RX bars, 2 webcams, 2 tripods, USB cable, power supply, 3 flat cable, software, trolley for 5 meter. PC or laptop required.
Optogait Kit 5m HS Cam 90 (fps)	cos102068_HS	OptoGait is an optical measuring system consisting of a transmitting and a receiving measuring bar. Content: 1xTX, 1xRX interface bar, 4xTX, 4x RX bars, 2 webcams 90 fps, 2 tripods, USB cable, power supply, 3 flat cable, software, trolley for 5 meter. PC or laptop required.
Optogait Kit 10m	cos102069	OptoGait is an optical measuring system consisting of a transmitting and a receiving measuring bar. Content: 1xTX, 1xRX interface bar, 9xTX, 9x RX bars, 2 webcams, 2 tripods, USB cable, power supply, 3 flat cable, software, 2 trolleys for 5 meter. PC or laptop required.
Optofix mounting Optogait / Optojump on the treadmill	cos103386	Holder system with magnets for Optojump / Optogait bar to mount it on h/p/cosmos treadmill (not for extra wide footboards). This set consists of 4 fastening profiles. For one bar 2 fastening profiles. Optogait / Optojump bar is NOT included in this item!

optojump

Microgate® - Optojump	order number	
Optojump Next Kit 1m single meter	cos102054	OptoJump is an optical measuring system consisting of a transmitting and a receiving measuring bar. Content: 1xTX, 1xRX bar with interface, 1 webcam, 1 tripod, USB cable, power supply, software, bag for 1 meter. PC or laptop required.
Optojump Next Kit 1m single meter HS Cam 90 (fps)	cos102054_HS	OptoJump is an optical measuring system consisting of a transmitting and a receiving measuring bar. Content: 1xTX, 1xRX bar with interface, 1 webcam 90 fps, 1 tripod, USB cable, power supply, software, bag for 1 meter. PC or laptop required.
Optojump Next Kit 1m for extension	cos102056	OptoJump is an optical measuring system consisting of a transmitting and a receiving measuring bar. Content: 1xTX, 1xRX bar with interface, 1 webcam, 1 tripod, USB cable, power supply, 3 flat cable, software, trolley for 5 meter. PC or laptop required.
Optojump Next Kit 1m additional meter	cos102055	Content: 1xTX, 1x RX bar 1 meter with 2 connection plugs for extension (without bag)
Optojump Next Kit 5m	cos102060	OptoJump is an optical measuring system consisting of a transmitting and a receiving measuring bar. Content: 1xTX, 1xRX interface bar, 4xTX, 4x RX bars, 1 webcam, 1 tripod, USB cable, power supply, 3 flat cable, software, trolley for 5 meter. PC or laptop required.
Optojump Next Kit 5m_HS	cos102060_HS	OptoJump is an optical measuring instrument consisting of a transmitting and a receiving measuring bar. Content: 1xTX, 1xRX interface bar, 4xTX, 4x RX bars, 1 webcam 90 fps, 1 tripod, USB cable, power supply, 3 flat cable, software, trolley for 5 meter. PC or laptop required.
Optojump Next Kit 10m	cos102062	OptoJump is an optical measuring system consisting of a transmitting and a receiving measuring bar. Content: 1xTX, 1xRX interface bar, 9xTX, 9x RX bars, 1 webcam, 1 tripod, USB cable, power supply, 3 flat cable, software, 2 trolleys for 5 meter. PC or laptop required.
Optofix mounting Optogait / Optojump on the treadmill	cos103386	Holder system with magnets for Optojump / Optogait bar to mount it on h/p/cosmos treadmill (not for extra wide footboards). This set consists of 4 fastening profiles. For one bar 2 fastening profiles. Optogait / Optojump bar is NOT included in this item!

witty

Microgate® - Witty	order number	
WittyPRO wireless training timer kit (single photocells)	cos102072	Wireless timing system (start...finish) range 150 meter with timer
WittyPRO wireless training kit (single photocells) without timer	cos102072_01	Wireless timing system (start...finish or 2 intermediate times) range 150 meter without timer
WittyPRO intermediate time (single photocell)	cos102076	Intermediate time set (1 intermediate time) range 150 meter
WittyPRO wireless training timer kit (double photocells) with timer	cos102074	Wireless timing system with double photocells (start...finish) range 150 meter with timer
WittyPRO wireless training timer kit (double photocells) without timer	cos102074_01	Wireless timing system with double photocells (start...finish or 2 intermediate times) range 150 meter without timer
WittyPRO intermediate time (double photocells)	cos102073	Intermediate time set with double photocells (1 intermediate time) range 150 meter
Witty TAB Kit	cos102075	Witty TAB LED indicator board with tripod, charger and bag, running time about 10 hours
WittyPRO wireless training timer kit with Witty TAB	cos200015	Wireless timing system (start...finish) range 150 meter with timer + Witty TAB LED indicator board with tripod, charger and bag, running time about 10 hours
WittyPRO wireless training kit with Witty TAB without timer	cos200015_01	Wireless timing system (start...finish) range 150 meter without timer + Witty TAB LED indicator board with tripod, charger and bag, running time about 10 hours
WittyPRO wireless training timer kit with WittyPRO SEM with timer	cos200014	Wireless timing system (start...finish) range 150 meter with timer + 1 Witty SEM traffic light for start signal or change of direction
WittyPRO wireless training kit with WittyPRO SAM without timer	cos200014_01	Wireless timing system (start...finish) range 150 meter without timer + 1 Witty SEM traffic light for start signal or change of direction
Witty startmat StartPad	cos102102	Witty - StartPad (30 x 40 cm) for start or intermediate time (requires cable connection to timer/ photocell); Connection cable cos102103 please order separately!
Witty starting clapper	cos102102_FLAP	Wooden starting clapper: a integrated vibration sensor sends the starting signal to timer/ photocell
Witty electronic starting pistol with microphone and loudspeaker	cos102102_GUN	Electronic pistol that reproduces three types of sound (bang, whistle and siren) and a luminous flash. This system is equipped with a portable loudspeaker that has its own microphone (connected to Witty via the dedicated cable).
Witty RFID Kit	cos200007	Set for automatic recognition and registration of the athlete. Content: RFID reader and 30 identification wristbands
WittyPRO SEM - 1x traffic light kit (timer optional)	cos200002-01	1 "Intelligent traffic light" with a 7x5 multi-colour LED matrix incl. proximity sensor. Display of colours, letters, numbers and symbols. Contents: 1 WittyPRO SEM light signal, 1 USB charger, 1 USB charging cable, 1 tripod, 1 clamp, 1 bag
WittyPRO SEM - 2x traffic light kit (timer optional)	cos200004-01	2 "Intelligent traffic lights" with a 7x5 multi-colour LED matrix incl. proximity sensor. Display of colours, letters, numbers and symbols. Contents: 2 WittyPRO SEM light signals, 1 USB charger, 2 USB charging cable, 2 tripod, 2 clamp, 1 backpack
WittyPRO SEM - 4x traffic light kit (timer optional)	cos200005-01	4 "Intelligent traffic lights" with a 7x5 multi-colour LED matrix incl. proximity sensor. Display of colours, letters, numbers and symbols. Contents: 4 WittyPRO SEM light signals, 1 USB charger, 4 USB charging cable, 4 tripods, 4 clamps, 1 backpack
WittyPRO SEM - 6x traffic light kit (timer optional)	cos200017-01	6 "Intelligent traffic lights" with a 7x5 multi-colour LED matrix incl. proximity sensor. Display of colours, letters, numbers and symbols. Contents: 6 WittyPRO SEM light signals, 2 USB charger, 6 USB charging cable, 6 tripods, 6 clamps, 2 backpacks
WittyPRO SEM - 8x traffic light kit (timer optional)	cos200006-01	8 "Intelligent traffic lights" with a 7x5 multi-colour LED matrix incl. proximity sensor. Display of colours, letters, numbers and symbols. Contents: 8 WittyPRO SEM light signals, 2 USB charger, 8 USB charging cable, 8 tripods, 8 clamps, 2 backpacks
WittyPRO chronometer / timer	cos102078_PRO	Chronometer for WittyPRO timing and WittyPRO SEM lights.
Witty SEM frame	cos102653-01	Witty SEM frame for agility, speed, reaction training of the upper limbs
Witty backpack	cos102467	The perfect backpack for storage and the transport of WittyPRO Timing and WittyPRO SEM equipment
Microgate tripod for WittyPRO timing/ WittyPRO SEM or cameras	cos102644	tripod : h.425-1250mm - max. load capacity 8kg
Witty clamp for Witty SEM frame	cos102643	Witty clamp for mounting a Witty SEM light signal to the Witty frame
Witty USB charger	cos102654-01	Witty charger for witty and witty accessories
Witty USB cable	cos102636	Witty USB cable for witty and witty accessories
Wrist band for RFID System	cos102652	RFID wrist band (1 pc)
Witty PROMOVE Premium for 1 year	cos104605	devices unlimited, cloud synchronizing, access to all tests (price per year)

Options & Accessoires

UserTerminals
special voltages
floor protection accessories
interfaces PCs, printers & accessories
lactate measurement, software & accessories
 >> In case of retrofitting of options and accessories,
 prices will be higher than indicated in the price list.<<



userterminals

UserTerminals	order number	
UserTerminal TouchPro for MCU5 remote control	cos101000retva01	desktop version with flat base; including external power supply and connection cable (10,1" TouchScreen & keyboard).
UserTerminal TouchPro for MCU5 remote control	cos101000retva02	with flange and clamp 60mm pipe for mounting on treadmill handrail; including external power supply and connection cable (10,1" TouchScreen & keyboard).
Display & Keyboard 6 keys retro fit kit for UserTerminal MCU 5	cos15312va01	retrofit-kit Display & Keyboard for UserTerminal, extra charge for travel costs and installation; (available on request)
Folding shelf for external control desk, UserTerminal venus/satum	cos100781	for models with running surface 200+75+ cm, manufactured after January 2011
Notebookholder (mounted on ext. control desk venus/satum)	cos13320-01	for models with running surface 200+75+ cm, manufactured after January 2011

special voltages

special voltages	order number	
Special voltage medical devices 150/50 G7	cos103622-01va01	voltage-Med U:100V,1AC~,25A,50-60Hz (not recommended due to performance limitations)
Special voltage medical devices 150/50 G7	cos103622-01va02	voltage-Med U:110V,1AC~,25A,50-60Hz (not recommended due to performance limitations)
Special voltage medical devices 150/50 G7	cos103622-01va03	voltage-Med U:120V,1AC~,25A,50-60Hz (not recommended due to performance limitations)
Special voltage medical devices 150/50 G7	cos103622-01va04	voltage-Med U:127V,1AC~,25A,50-60Hz (not recommended due to performance limitations)
Special voltage sport devices 150/50 G7	cos103622-01va05	voltage-Sport U:100V,1AC~,25A,50-60Hz (not recommended due to performance limitations)
Special voltage sport devices 150/50 G7	cos103622-01va06	voltage-Sport U:110V,1AC~,25A,50-60Hz (not recommended due to performance limitations)
Special voltage sport devices 150/50 G7	cos103622-01va07	voltage-Sport U:120V,1AC~,25A,50-60Hz (not recommended due to performance limitations)
Special voltage sport devices 150/50 G7	cos103622-01va08	voltage-Sport U:127V,1AC~,25A,50-60Hz (not recommended due to performance limitations)
Special voltage medical devices xxx/65 UserTerminal 10,1" TouchPro	cos104088va01	voltage-Med U:200V,2AC~,25A,50-60Hz (not recommended due to performance limitations)
Special voltage medical devices xxx/65 UserTerminal 10,1" TouchPro	cos104088va02	voltage-Med U:208V,2AC~,25A,50-60Hz (not recommended due to performance limitations)
Special voltage sport devices xxx/65 UserTerminal 10,1" TouchPro	cos104088va03	voltage-Sport U:200V,2AC~,25A,50-60Hz (not recommended due to performance limitations)
Special voltage sport devices xxx/65 UserTerminal 10,1" TouchPro	cos104088va04	voltage-Sport U:208V,2AC~,25A,50-60Hz (not recommended due to performance limitations)
Special voltage medical devices xxx/65 UserTerminal 10,1" TouchPro	cos104088va05	voltage-Med U:200V,2AC~,25A gateway3D (not recommended due to performance limitations)
Special voltage medical devices xxx/65 UserTerminal 10,1" TouchPro	cos104088va06	voltage-Med U:208V,2AC~,25A gateway3D (not recommended due to performance limitations)
Special voltage sport devices xxx/65 UserTerminal 10,1" TouchPro	cos104088va07	voltage-Sport U:200V,2AC~,25A gateway3D (not recommended due to performance limitations)
Special voltage sport devices xxx/65 UserTerminal 10,1" TouchPro	cos104088va08	voltage-Sport U:208V,2AC~,25A gateway3D (not recommended due to performance limitations)
Special voltage medical devices xxx/65 UserTerminal 10,1" TouchPro	cos16153-01	voltage-M U:200V AC3~IPE 32A f50/60Hz
Special voltage for medical devices quasar / pulsar 3p	cos12068-01va02	voltage-M U:208V AC3~IPEN 20A f50/60Hz
Special voltage for medical devices gateway 3D + elevation	cos12068-01va01	voltage-M U:208V AC3~IPEN 20A f50/60Hz
Transformer 3p Dyn5 200V/208/220/400/480	cos100803-01	transformer for special voltage of 3x200V/76A, 3x208V/72A, 3x220V/67A, 3x400V/36A, 3x480V/30A f: 50/60 Hz, incl. housing in IP21, protectors and jacks of 1p/3 p

floor protection

floor protection accessories	order number	
Floor protection mat 40x30	cos103852	Floor protection mat, additional floor protection using a treadmill (2 pcs)
Floor protection, steel base plate (for elevation wheels 150/50)	cos101393	floor plate for weight distribution, for models 150/50 cm
Floor protection, steel base plate (for elevation wheels 170-190/65)	cos101394	floor plate for weight distribution, for models 170&190/65 cm

interfaces, PCs, printers & accessories

interfaces, PCs, printers & accessories	order number	
POLAR® HeartRate Sensor H10 Wearlink® Bluetooth Smart	cos101787-01	wireless transmitter including chest belt size M-XXL, for smartphones, iPhone (from iPhone 4S, iOS 5.1) and bluetooth receiver in computer
4th interface RS232 com4 for MCU5 coscom® 9,600 or 115,200 bps	cos16488	additional RS232 port for ECG, EEG, PC or UserTerminal; com4 not available when POLAR WIND is used
Potential equalization cable 5 m (with 2 POAG-plugs)	cos10223-01	potential equalization cable for medical devices
h/p/cosmos satellite PC med	cos14970-03	DELL PC, 2x 24" LED Monitor, COL Laser printer, potential isolation transformer, h/p/cosmos PC-rack with 4 casters
h/p/cosmos satellite Notebook	cos15686-01	DELL notebook, potential isolation transformer, h/p/cosmos PC-rack with 4 casters
h/p/cosmos PC-rack of steel, without PC, without devices	cos15033-03	ergonomically designed PC-rack in pure white (RAL-colour 9010) of powder coated steel in h/p/cosmos-design
h/p/cosmos PC-rack of steel, without PC, without devices	cos15033-03pot	ergonomically designed PC-rack in pure white (RAL-colour 9010) of powder coated steel in h/p/cosmos-design with medical transformer polyMIT1000
DELL Laptop Computer	cos13476-01	technical details and specification on request
LED monitor TV 50" (with a small monitor stand for table)	cos102397	for example for SpeedLab®, gateway® display or for the virtual training module of zebris®
Monitor stand mobile for LCD TV 32-60"	cos101624	monitor stand (without monitor!) for additional TV / monitor (max. load: 30 kg), height: 180 cm.
Connection cable RS232 15 m	cos11889	RS232, 15 m (Sub-D 9-pin male/female), USB-Adapter optionally available (cos12769-01)
Connection cable RS232 20 m	cos11889_20m	RS232, 20 m (Sub-D 9-pin male/female), USB-Adapter optionally available (cos12769-01)
Connection cable RS232 25 m	cos11889_25m	RS232, 25 m (Sub-D 9-pin male/female), USB-Adapter optionally available (cos12769-01)
USB 3.0 cable 5 m	cos102953	USB-cable A-B black, 5 m

lactate measurement, software & accessories

lactate measurement, software & accessories	order number	
Software h/p/cosmos para control®	cos10071-w.2.0-bt	software for controlling running machines; can be used for optional bluetooth heart rate sensor.
Lactate Scout Sport Starter Set	cos14825-sport	Mobile lactate meter Lactate Scout sport, manufacturer: EKF-diagnostic GmbH, e-paper display, 10 sec. measuring time, easy to use.
Test strip box 25 Lactate Scout Sport	cos14854-sport	Can be used for lactate meter h/p/cosmos sirius, Lactate Scout+, Lactate Scout 4 and Lactate Scout Sport.
Lactate test solution 8,9 - 11,1 mmol/l	cos15527-01-10mmol	Test solution can be used to check the function of h/p/cosmos sirius, Lactate Scout+, Lactate Scout 4 and Lactate Scout Sport.
Lactate test solution 4,5 - 5,6 mmol/l	cos15527-01-5mmol	Test solution can be used to check the function of h/p/cosmos sirius, Lactate Scout+, Lactate Scout 4 and Lactate Scout Sport.
Starter set sirius® Lactate Scout Sport	cos100660-sport	starter set consisting of cos14825-sport, cos14854-sport, cos100773, 6x cos100774
Lancing device FINETOUGH	cos100773	safe lancing device FINETOUGH
Sterile lancets FINETOUGH	cos100774	sterile lancettes FINETOUGH pro - 25 pieces per box
Utility box for lactate equipment with fastening clamp on the handrail	cos100973	Tray for storing of diverse materials. The tray is mounted on the treadmill-handrail Ø 60mm with a clamp.

consumables & service	order number	
Special oil (bottle 250 ml)	cos000200008001	This oil type (special lubricant) is only for h/p/cosmos running machine surface for running application. (manual lubrication with "hand-pump" syringe)
Special oil (bottle 250 ml) for automatic lubrication	cos14007	This oil type (special lubricant) is only for running machine surface for any applications with wheels (cycles, wheelchair, ski, skating, etc.) where the running machine has oil tank and automatic oil pump.
Special oil (bottle 125 ml) for manual lubrication for pluto treadmills	cos102446	This oil type (special lubricant) is only for h/p/cosmos running machinesurface for running application. (manual lubrication with "hand-pump" syringe)
Syringe 10 ml	cos12181	Syringe 10 ml for lubrication of running surface.
POLAR Sender T34 Set (extended Range)	cos15178	POLAR T34 chest belt transmitter
POLAR Heart Rate Monitor Set OH1 arm belt	cos101787_OH1	optical pulse sensor, 6 LED system Bluetooth transmitter + arm strap, for devices with UserTerminal Touch and locomotion
POLAR® HeartRate Sensor H10 Wearlink® Bluetooth Smart	cos101787-01	wireless transmitter including chest belt size M-XXL, for smartphones, iPhone (from iPhone 4S, iOS 5.1) and bluetooth receiver in computer
chest belt POLAR HR M-XXL Pro for WIND+H10	cos100420c-02	Strap Pro Chest M-XXL BLK (without transmitter)
POLAR Heart RateSensor H10	cos101787-01a	POLAR heart rate sensor H10 without chest strap, with Bluetooth for devices with UserTerminal Touch and locomotion
POLAR chest belt XS	cos10905	POLAR chest-belt rubber-band size XS
POLAR chest belt S	cos10906	POLAR chest-belt rubber-band size S
POLAR chest belt M	cos101165	POLAR chest-belt rubber-band size M
POLAR chest belt L	cos10907	POLAR chest-belt rubber-band size L
POLAR® HeartRate Sensor H10 Wearlink® Bluetooth Smart	cos101787-01	wireless transmitter including chest belt size M-XXL, for smartphones, iPhone (from iPhone 4S, iOS 5.1) and bluetooth receiver in computer
airwalk, cable assembly	cos13752	for h/p/cosmos airwalk 35/50/90
MCU5 Firmware running machine	cos1660m5tm-vx.xx.x	for treadmill with MCU5 control board with coscom v3 and coscom v4
MCU6 Software Version: x.x.xxxx (latest version)	cos101000-vx.xxxxx	for treadmill with Touch & TouchPro
retrofit kit additional line-filter	cos103565-01ret	retrofit kit mains filter for h/p/cosmos sports treadmills G6 for additional capacitive leakage current reduction.

In case of retrofitting of options and accessories, prices will be higher than indicated in the price list. Please specify device, model and serial number for a detailed quotation. Not all options and accessories are available for all models.

space for individual items	order number	